

Philips Sonicare For Kids
Sonic electric toothbrush

Built-in Bluetooth®

Coaching App
1 brush head & 10 stickers
2 modes

For Kids



HX6321/02

Interactive sonic power. More fun, better brushing

An exciting start to lifelong healthy habits

Keep kids engaged while they learn to brush. The Philips Sonicare For Kids Bluetooth-enabled toothbrush interacts with a fun app that helps kids brush better and for longer. Kids have fun while learning techniques that will last a lifetime.

Interactive fun and Philips Sonicare technology

- Interactive app gets kids excited about brushing
- 98% say it's easier to get kids brush longer and better*
- Exciting rewards for successful brushing sessions
- Keep track of brushing time even when you don't use the app

Designed to help build lifelong healthy habits

- KidTimer and KidPacer for a lifetime of proper brushing
- Fun interchangeable stickers for customization
- Multi grip design for parents and kids

Provides a superior clean, protects growing smiles

- Dynamic cleaning action drives fluid between teeth
- Rubberized brush head is designed to protect young teeth
- 2 brush head sizes available
- Preferred by dental professionals for their own children
- 2 Kid-friendly power modes deliver a gentle, effective clean

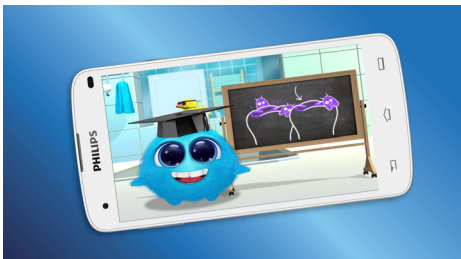
PHILIPS
sonicare

Sonic electric toothbrush
Built-in Bluetooth® Coaching App, 1 brush head & 10 stickers, 2 modes

HX6321/02

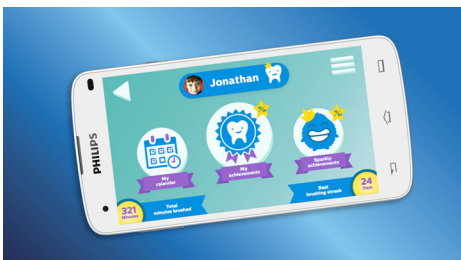
Highlights

Fun, educational, effective



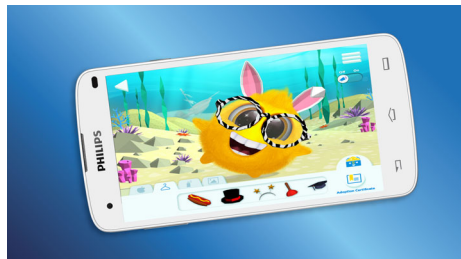
The Philips Sonicare For Kids app synchs with your kid's sonic toothbrush to help them learn about oral care through play. Your kid's brushing coach challenges them to brush for longer and better. Each session starts with clear visual instructions about correct brushing techniques and the app's progress monitor tracks the total performance. Kids learn while having fun, and parents get to see how well kids are doing in between check ups.

Interactive Sonicare For Kids



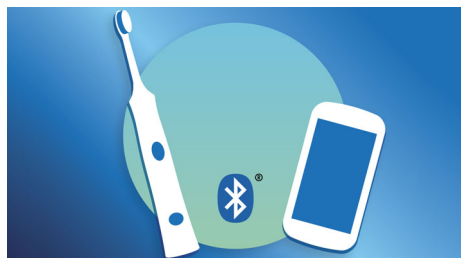
With the Philips Sonicare For Kids toothbrush and app, children can discover how to brush properly on their own. The app synchs with your kid's sonic toothbrush via Bluetooth to show proper brushing techniques and track performance. Kids can see how well they brush, and earn exciting rewards for a job well done. Educational, and effective, 98% of parents surveyed say it's easier to get their kids to brush longer and better. It's the fun way to help kids develop healthy oral care habits that will last a lifetime.

More fun, better results



Our Philips Sonicare For Kids toothbrush and app brings a whole new level of fun to brushing. The app's central character is the loveable Sparkly, who really likes to have clean teeth. Kids take care of Sparkly while the app's brushing coach challenges them to brush longer and better. Each time your kid brushes well, Sparkly gets happier and each successful brushing session is rewarded. Kids can unlock accessories to personalize their Sparkly, or they can win food for Sparkly, who likes to eat healthy. Parents can even choose rewards to place on the app themselves.

Bluetooth connection



With the Bluetooth-enabled Philips Sonicare For Kids toothbrush, the app's Quadpacer tracks brushing sessions in real time. It recognizes when a brushing session starts, pauses and is completed. And thanks to an integrated memory and time stamp on the toothbrush handle, you can even save the details of up to 20 brushing sessions when you're not using the app. Next time you use the app and handle together, the details of those sessions are synched to the app's calendar. Rewards for successful brushing

sessions can still be collected, and your kid can easily see how far they've progressed.

KidTimer + KidPacer



To encourage a proper brushing routine, the Bluetooth-enabled Philips Sonicare For Kids electric toothbrush connects with the app and helps kids slowly increase brushing time. The aim is to reach the dentist-recommended two minutes. When you use the app, kids get to mimic the app's brushing coach as it carefully brushes each section of its mouth. The brushing coach will encourage your kid to increase the time spent on each quadrant. As your kid's brush for longer, they'll be rewarded by their Sparkly, who's happy with its really clean teeth. It's fun training for a lifetime of proper brushing.

Sonic technology



As kids learn to brush, our sonic technology does the rest. The unique dynamic action of a Philips Sonicare electric toothbrush gently and effectively reaches deep between teeth and along the gum line. With over 500 strokes per second, sonic cleaning power helps compensate for developing techniques as children grow better at brushing. This technology makes a Philips Sonicare For Kids toothbrush up to 75% more effective than manual toothbrushes, resulting in more successful check-ups.

Specifications

Modes

- Power modes: 2

Items included

- Handles: 1 Sonicare for Kids Bluetooth-enabled handle
- Brush heads: 1 Sonicare for Kids standard
- Charger: 1
- Stickers: 8 customization stickers, 2 Bonus stickers

Design and finishing

- Color: Aqua

Cleaning performance

- Speed: Up to 31,000 brush strokes/min
- Performance: 75% more effective*
- Health benefits: For healthy oral care habits
- Timer: KidTimer and Quadpacer

Ease of use

- Brush head system: Easy click-on brush heads
- Brushing time: Up to 3 weeks**

- Battery indicator: Light shows battery status
- Display: Illuminated display
- Handle: Rubber grip for easy handling, Slim ergonomic design

Compatibility

- iOS compatibility: iPhone 4S or higher, iPad 3rd Gen or higher, with iOS7 operational system
- Android compatibility: Android phones, Bluetooth 4.0 enabled tablets

Technical specifications

- Battery: Rechargeable
- Battery type: Lithium ION
- Operating time (full to empty): Up to 2 weeks

Power

- Voltage: 110-220 V

Service

- Warranty: 2-year limited warranty



Issue date 2015-11-24

Version: 10.1.1

© 2015 Koninklijke Philips N.V.
All Rights reserved.

Specifications are subject to change without notice.
Trademarks are the property of Koninklijke Philips N.V.
or their respective owners.

www.philips.com

* of the parents surveyed versus using a toothbrush alone
** than a manual toothbrush
*** based on two periods of two-minute brushings per day
* *** survey of US dental professionals with children age 4-10