

# PHILIPS

## Hairdryer

### DryCare Essential

1800W

ThermoProtect setting



BHD017/00



## Easy care for your hair

The Philips ThermoProtect Essential hairdryer with 1800W power enables you to dry hair quickly, while the ThermoProtect setting offers extra care. With 6 flexible heat and speed settings, it is designed to meet different drying needs.

#### Care for your hair

- ThermoProtect temperature setting

#### Professional salon style results

- 1800W for fast drying
- 20 mm concentrator for precise styling
- Dryer: 6 heat/speed setting for full flexibility
- Cool Shot sets your style

#### Easy to use

- 1.8m power cord
- Easy storage hook for convenient storage

# Highlights

## 1800W for fast drying



This 1800W hairdryer creates high airflow and drying power, for beautiful and salon like results every day.

## ThermoProtect temperature



The ThermoProtect temperature setting with the constant airflow temperature allows you to quickly dry your hair without overheating, maintaining your hair's natural moisture level, for shiny healthy looking hair.

## 6 heat/speed settings



Dryer: 6 heat/speed setting for full flexibility

## 20 mm concentrator



The opening of the 20mm nozzle concentrates the flow of air to specific areas. Use for focused styling together with the dryer and a brush.

## Cool Shot



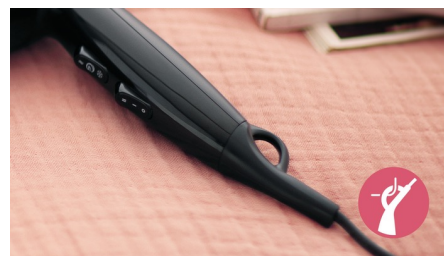
A must-have professional function, the Cool Shot button provides an intense burst of cold air. It is used after styling to finish and set the style.

## 1.8m cord



Convenient to use thanks to the 1.8m power cord length.

## Easy storage hook



A rubberized hook can be found on the base of the handle. Use to store easily at home or if staying at a hotel.

# Specifications

## Technical specifications

ThermoProtect setting

Voltage: 220 V

Wattage: 1800 W

Cord length: 1.8 m

## Features

Heat/Speed settings: 6

## Accessories

Attachments: Nozzle

## Service

2-year worldwide guarantee

