

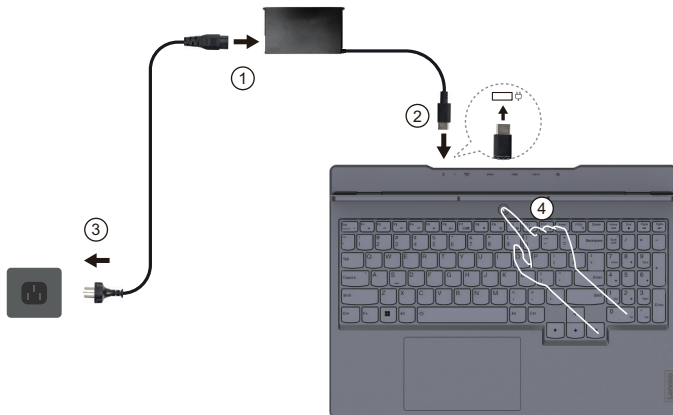
# LEGION

Lenovo



## Get it started

Introducción | Първи стъпки | Introdução | Wprowadzenie | Introdução



Power plugs vary by country or region. Illustrations may not be exactly the same as the product. | Los enchufes varían en función del país o de la región. Es posible que las ilustraciones no sean exactamente iguales al producto. | Щенелите се различават в зависимост от страната или региона. Илюстрациите може да не са съвсем същите като продукта. | As tomadas de energia variam de acordo com o país ou região. As ilustrações podem não ser exatamente as mesmas do produto. | Wszystkie zasilania różnią się w zależności od kraju lub regionu. Ilustracje mogą nie być dokładnie takie same jak produkt. | As fichas de alimentação variam de acordo com o país ou região. As ilustrações podem não corresponder exatamente ao produto.



## Overview

Visión general | Общ преглед | Visão geral | Informacje ogólne | Descrição geral



### Camera

Cámara | Камера | Câmera |  
Kamera | Cámara



### Thunderbolt™ 4 port

Puerto Thunderbolt™ 4 |  
Thunderbolt™ 4 порт | Porta  
Thunderbolt™ 4 | Port Thunderbolt™  
4 | Porta Thunderbolt™ 4



### Multi-function USB port

Puerto USB multifunción |  
Многофункционален USB порт |  
Porta USB multifuncional |  
Wielofunkcyjny port USB |  
Porta USB multifunções



### USB 3.2 Gen 1 port

Puerto USB 3.2 Gen 1 | Порт USB  
3.2 Gen 1 | Porta USB 3.2 Gen 1 |  
Port USB 3.2 Gen 1 | Porta USB 3.2  
Gen 1



### Camera switch

Interruptor de cámara |  
Превключвател на камерата |  
Interruptor de cámara | Przełącznik  
kamery | Interruptor de cámara



### Combo audio jack

Conector de audio combinado |  
Комбиниран аудиожак |  
Conector de áudio combinado |  
Gniazdko combo audio |  
Tomada áudio combinada



Scan the *User Guide* QR code and read the statement on USB transfer rates. The multi-function USB port supports SuperSpeed USB 10 Gbps and DisplayPort Alt Mode. | Escanee el código QR de la *Guía del usuario* y lea la declaración sobre la tasa de transferencia USB. El puerto USB multifunción admite SuperSpeed USB 10 Gbps y DisplayPort Alt Mode. | Сканирайте QR кода на *Ръководство за потребителя*, за да видите дадените спецификации за скоростта на прехвърляне на данни по USB. Многофункционалният USB порт поддържа SuperSpeed USB 10 Gbps и DisplayPort Alt Mode. | Digitalize o código QR do *Guia do Usuário* e leia a declaração sobre taxa de transferência USB. A porta USB multifuncional suporta o SuperSpeed USB 10 Gbps e o DisplayPort Alt Mode. | Zeskanuj kod QR Podręczniku użytkownika i przeczytaj informację o prędkości przesyłu danych za pomocą USB. Wielofunkcyjny port USB obsługuje SuperSpeed USB 10 Gb/s i DisplayPort Alt Mode. | Digitalize o código QR do *Manual do Utilizador* e leia a declaração sobre velocidade de transferência USB. A porta USB multifunções suporta SuperSpeed USB 10 Gbps e DisplayPort Alt Mode.





## Ethernet port

Puerto Ethernet | Ethernet port |  
Porta Ethernet | Port Ethernet |  
Porta Ethernet



## USB 3.2 Gen 1 port

Puerto USB 3.2 Gen 1 | Порт USB  
3.2 Gen 1 | Porta USB 3.2 Gen 1 |  
Port USB 3.2 Gen 1 |  
Porta USB 3.2 Gen 1



## Multi-function USB port (USB Power Delivery compliant)

Puerto USB multifunción (conforme  
con USB Power Delivery) |  
Многофункционален USB порт  
(съвместим с USB Power Delivery) |  
Porta USB multifuncional (em  
conformidade com o USB Power  
Delivery) | Wielofunkcyjny port USB  
(zgodny z USB Power Delivery) |  
Porta USB multifunções (compatível  
com USB Power Delivery)



## USB 3.2 Gen 1 port (always-on)

Puerto USB 3.2 Gen 1 (always-on) |  
Порт USB 3.2 Gen 1 (always-on) |  
Porta USB 3.2 Gen 1 (always-on) |  
Port USB 3.2 Gen 1 (always-on) |  
Porta USB 3.2 Gen 1 (always-on)



## HDMI™ port

Puerto HDMI™ | HDMI™ порт |  
Porta HDMI™ | Port HDMI™ |  
Porta HDMI™

For Barcode Position Only

Printed in China  
PN: SP41F99600



## Power connector

Conector de alimentación |  
Съединител за храняване |  
Conector de energia | Złącze  
zasilania | Conector de alimentação



The always-on USB port supports power output in sleep or powered-off state. The Power Delivery compliant multi-function USB port supports USB Power Delivery. | El puerto USB always-on admite la salida de energía en estado de suspensión o apagado. El puerto USB multifunción conforme con Power Delivery admite USB Power Delivery. | Порт always-on USB поддържа изходна мощност в режим на заспиване и в изключено състояние. Многофункционалният USB порт, съвместим с Power Delivery, поддържа USB Power Delivery. | A porta always-on USB suporta a saída de energia no modo suspensão ou desligado. A porta USB multifuncional suporta o Power Delivery suporta o USB Power Delivery. | Port USB always-on obsługuje wyjście zasilania w stanie uśpienia lub wyłączenia. Wielofunkcyjny port USB zgodny z Power Delivery obsługuje USB Power Delivery. | A porta always-on USB suporta a saída de energia no estado de suspensão ou desligado. A porta USB multifunções compatível com Power Delivery suporta USB Power Delivery.



# Fn shortcuts

Métodos abreviados Fn | Преки пътища Fn | Atalhos Fn | Skróty Fn | Atalhos Fn

## Fn + Esc

### Switches the primary function of the function keys (F1–F12)

Cambia la función principal de las teclas de función (F1–F12) | Превключва основната функция на функционалните клавиши (F1–F12) | Altera a função principal das teclas de função (F1–F12) | Przełączają podstawową funkcję klawiszy funkcyjnych (F1–F12) | Altera a função principal das teclas de função (F1–F12)

## Fn + Q



### Switches operating modes

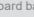
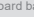
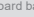
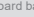
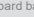
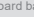
Cambia los modos de funcionamiento | Превключва между режимите на работа | Altera os modos de operação | Przełączają tryby pracy | Altera os modos de funcionamento

## Fn +



### Controls keyboard backlight\*

Controla la retroiluminación del teclado\* | Управлява подсветката на клавиатурата\* | Controla a luz traseira do teclado\* | Sterują podświetleniem klawiatury\* | Controla a luz de fundo do teclado\*

- \* For selected models with the multi-color keyboard backlight, Fn +  switches among pre-defined lighting patterns. Lighting patterns are customizable in Lenovo Vantage. | En los modelos seleccionados con retroiluminación multicolor del teclado, Fn +  cambia entre los distintos patrones de iluminación predefinidos. Los patrones de iluminación pueden personalizarse en Lenovo Vantage. | За избрани модели с многоцветна подсветка на клавиатурата, Fn +  превключва между предварително зададените режими на осветление. Режимите на осветление могат да бъдат персонализирани в Lenovo Vantage. | Para modelos seleccionados com a luz traseira de teclado multicolor, o Fn +  altera entre padrões de iluminação predefinidos. Os padrões de iluminação são personalizáveis no Lenovo Vantage. | W wybranych modelach z wielokolorowym podświetleniem klawiatury klawisze Fn +  przełączają między wstępnie zdefiniowanymi wzorami oświetlenia. W Lenovo Vantage można dostosować wzory oświetlenia. | Para modelos seleccionados com luz de fundo de teclado multicolor, Fn +  alterna entre os padrões de iluminação pré-definidos. Os padrões de iluminação são personalizáveis em Lenovo Vantage.

## Specific absorption rate (SAR)

YOUR DEVICE MEETS INTERNATIONAL GUIDELINES FOR EXPOSURE TO RADIO WAVES.

Refer to the following for 10g SAR limit and maximum reported SAR values:

Item	Body-worn SAR	Limb SAR
10g SAR limit	2 W/kg	4 W/kg
Maximum SAR with 0 mm separation distance	0.850 W/kg	0.850 W/kg

For more information about SAR, refer to the *Safety and Warranty Guide* that came with your device.

## European Union (EU)/United Kingdom (UK)—radio frequency and power

This radio equipment operates with the following frequency bands and maximum radio frequency power.

Technology	Frequency band [MHz]	Maximum transmit power
WLAN 802.11b/g/n/ax	2400–2483.5	< 20 dBm
WLAN 802.11a/n/ac/ax	5150–5725	< 23 dBm
WLAN 802.11a/n/ac/ax	5725–5875	<13.98 dBm
WLAN 802.11ax	5945–6425	< 23 dBm
Bluetooth BR/EDR/LE	2400–2483.5	< 20 dBm

Note: Not all wireless bands may be enabled depending on your product configuration. Usage of this device is limited to indoor locations in the bands 5150–5350 MHz and 5945–6425 MHz.

## Tasa de absorción específica (SAR)

EL DISPOSITIVO CUMPLE CON LAS PAUTAS INTERNACIONALES DE EXPOSICIÓN A ONDAS DE RADIO.

Consulte lo siguiente para el límite de SAR de 10g y los valores de SAR máximos notificados:

Elemento	SAR implantado en el cuerpo	SAR de extremidad
Límite SAR de 10g	2 W/kg	4 W/kg
SAR máximo con una distancia de separación de 0 mm	0,850 W/kg	0,850 W/kg

Para obtener más información sobre SAR, consulte la *Guía de seguridad y garantía* que se entregó con su dispositivo.

## Unión Europea (UE) / Reino Unido: radiofrecuencia y potencia

Este equipo de radio funciona con las siguientes bandas de frecuencia y energía de radiofrecuencia máxima.

Tecnología	Banda de frecuencia [MHz]	Energía de transmisión máxima
WLAN 802.11b/g/n/ax	2400 - 2483,5	< 20 dBm
WLAN 802.11a/n/ac/ax	5150 - 5725	< 23 dBm
WLAN 802.11a/n/ac/ax	5725 - 5875	< 13,98 dBm
WLAN 802.11ax	5945 - 6425	< 23 dBm
Bluetooth BR/EDR/LE	2400 - 2483,5	< 20 dBm

Nota: En función de la configuración de su producto, es posible que no estén habilitadas todas las bandas inalámbricas. El uso de este dispositivo está limitado al uso en interiores con bandas de 5150-5350 MHz y 5945-6425 MHz.

## Специфично ниво на поглъщане (SAR)

УСТРОЙСТВОТО ОТГОВАРЯ НА МЕЖДУНАРОДНИТЕ УКАЗАНИЯ ЗА ИЗЛАГАНЕ НА РАДИО ВЪЛНИ.

Вж. следното за ограничението за SAR за 10 г и максималните съобщени стойности на SAR:

Елемент	SAR при носене до тялото	SAR за крайник
Ограничение за SAR за 10 г	2 W/kg	4 W/kg
Максимална стойност на SAR при разстояние 0 мм	0,850 W/kg	0,850 W/kg

За повече информация относно SAR вижте *Наръчника за безопасност и гаранция*, която е доставена заедно с вашето устройство.

## Европейски съюз (ЕС) / Обединеното кралство – радиочестота и мощност

Това радиооборудване работи със следните честотни ленти и максимална радиочестотна мощност.

Технология	Честотна лента [MHz]	Максимална мощност на предаване
WLAN 802.11b/g/n/ax	2400 - 2483,5	< 20 dBm
WLAN 802.11a/n/ac/ax	5150 - 5725	< 23 dBm
WLAN 802.11a/n/ac/ax	5725 - 5875	< 13,98 dBm
WLAN 802.11ax	5945 - 6425	< 23 dBm
Bluetooth BR/EDR/LE	2400 - 2483,5	< 20 dBm

Zabeleżka: Не всички безжични диапазони могат да бъдат активирани в зависимост от конфигурацията на Вашия продукт. Използването на това устройство е ограничено до закрити помещения в диапазоните 5150 – 5350 MHz и 5945 – 6425 MHz.

## ● Taxa de absorção específica (SAR)

SEU DISPOSITIVO ATENDE ÀS DIRETRIZES INTERNACIONAIS DE EXPOSIÇÃO A ONDAS DE RÁDIO.

Consulte o seguinte para obter o limite da SAR de 10g e os valores SAR máximos reportados:

Item	SAR no corpo	SAR no membro
Limite de SAR para 10g	2 W/kg	4 W/kg
SAR máximo com distância de separação de 0 mm	0,850 W/kg	0,850 W/kg

Para obter mais informações sobre SAR, consulte o *Guia de Segurança e Garantia* que acompanha seu dispositivo.

## União Europeia (UE) / Reino Unido – radiofrequência e potência

Este equipamento de rádio opera com as seguintes faixas de frequência e a energia de frequência máxima:

Tecnologia	Banda de frequências [MHz]	Potência de transmissão máxima
WLAN 802.11b/g/n/ax	2400 - 2483,5	< 20 dBm
WLAN 802.11a/n/ac/ax	5150 - 5725	< 23 dBm
WLAN 802.11a/n/ac/ax	5725 - 5875	< 13,98 dBm
Bluetooth BR/EDR/LE	2400 - 2483,5	< 20 dBm

## ● Współczynnik promieniowania SAR (Specific Absorption Rate)

TO URZĄDZENIE SPEŁNIA MIĘDZYNARODOWE WYTYCZNE DOTYCZĄCE WYSTAWIENIA NA ODDZIAŁYWANIE FAL RADIOWYCH.

Poniżej wskazano limit SAR wynoszący 10 g i podano maksymalne zgłaszane wartości SAR:

Element	Wartość SAR przy noszeniu przy ciele	Wartość SAR dla kończyn
Limit SAR wynoszący 10 g	2 W/kg	4 W/kg
Maksymalna wartość SAR przy noszeniu przy ciele w odległości 0 mm	0,850 W/kg	0,850 W/kg

Więcej informacji na temat SAR zawiera w *Podręczniku na temat bezpieczeństwa i gwarancji* dołączonym do urządzenia.

## Unia Europejska (UE) / Wielka Brytania — częstotliwość radiowa i moc

Urządzenie używa następujących pasm częstotliwości radiowych i maksymalnej mocy fal radiowych.

Tecnologia	Pasmo częstotliwości [MHz]	Maksymalna moc nadawania
WLAN 802.11b/g/n/ax	2400 - 2483,5	< 20 dBm
WLAN 802.11a/n/ac/ax	5150 - 5725	< 23 dBm
WLAN 802.11a/n/ac/ax	5725 - 5875	< 13,98 dBm
WLAN 802.11ax	5945 - 6425	< 23 dBm
Bluetooth BR/EDR/LE	2400 - 2483,5	< 20 dBm

Notatka: Nie wszystkie pasma bezprzewodowe mogą być włączone w zależności od konfiguracji produktu. Korzystanie z tego urządzenia jest ograniczone do lokalizacji wewnątrz budynków w pasmach 5150 – 5350 MHz i 5945 – 6425 MHz.

## ● Taxa de Absorção Específica (SAR)

O SEU DISPOSITIVO CUMPRE AS DIRETRIZES INTERNACIONAIS REFERENTES À EXPOSIÇÃO A ONDAS DE RÁDIO.

Consulte, no seguinte documento, o limite da SAR de 10g e a SAR máxima registrada:

Item	SAR média relativa a todo o corpo	SAR relativa a membros específicos
Limite SAR de 10g	2 W/kg	4 W/kg
SAR máxima com distância de separação de 0 mm	0,850 W/kg	0,850 W/kg

Para obter mais informações sobre SAR, consulte o *Manual de Segurança e Garantia* fornecido com o dispositivo.

## União Europeia (UE) / Reino Unido (RU) — radiofrequência e potência

Este equipamento de rádio funciona com as seguintes bandas de frequência e potência de radiofrequência máxima.

Tecnologia	Banda de frequência [MHz]	Energia máxima transmitida
WLAN 802.11b/g/n/ax	2400 - 2483,5	< 20 dBm
WLAN 802.11a/n/ac/ax	5150 - 5725	< 23 dBm
WLAN 802.11a/n/ac/ax	5725 - 5875	< 13,98 dBm
WLAN 802.11ax	5945 - 6425	< 23 dBm
Bluetooth BR/EDR/LE	2400 - 2483,5	< 20 dBm

Nota: Nem todas as bandas sem fios podem ser ativadas, dependendo da configuração do seu produto. A utilização deste dispositivo é limitada a locais no interior nas bandas 5150 - 5350 MHz e 5945 - 6425 MHz.

First Edition (January 2022)  
© Copyright Lenovo 2022.

Lenovo, the Lenovo logo and Lenovo Legion are trademarks of Lenovo. Thunderbolt is a trademark of Intel Corporation or its subsidiaries. DisplayPort is a trademark owned by the Video Electronics Standards Association in the United States and other countries. The terms HDMI and HDMI High-Definition Multimedia Interface, and the HDMI logo are trademarks or registered trademarks of HDMI Licensing Administrator, Inc. in the United States and other countries. All other trademarks are the property of their respective owners.

#### LIMITED AND RESTRICTED RIGHTS NOTICE:

If data or software is delivered pursuant to a General Services Administration "GSA" contract, use, reproduction, or disclosure is subject to restrictions set forth in Contract No. GS-35F-05925.

