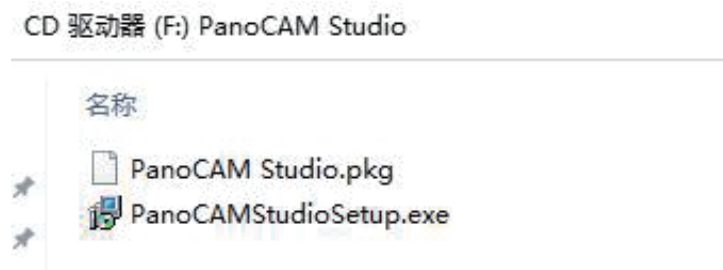


》 Instructions for Installing the PanoCAM Studio

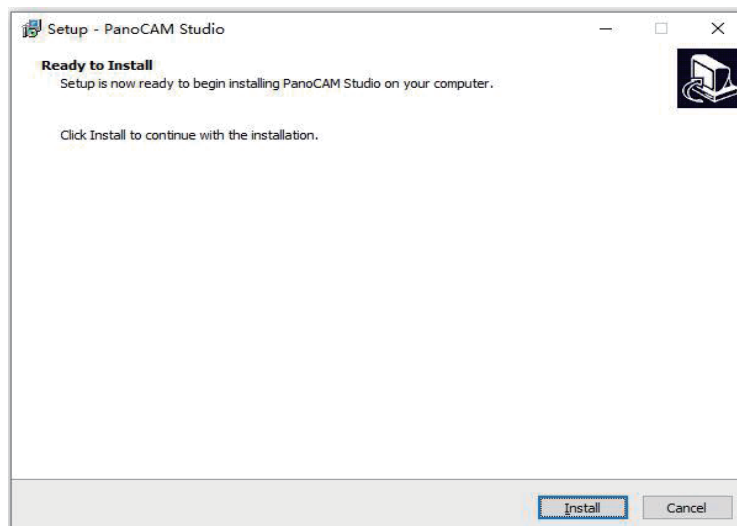
- 1 Obtain setup file: When the USB Panoramic Camera is connected to a PC, a CD-ROM icon will appear on the PC screen, as shown below.



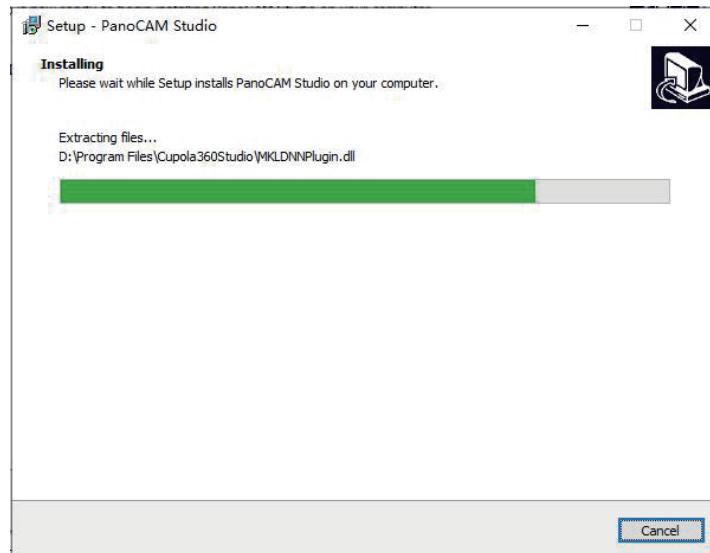
- 2 Double-click on the CD-ROM icon to enter the disk;



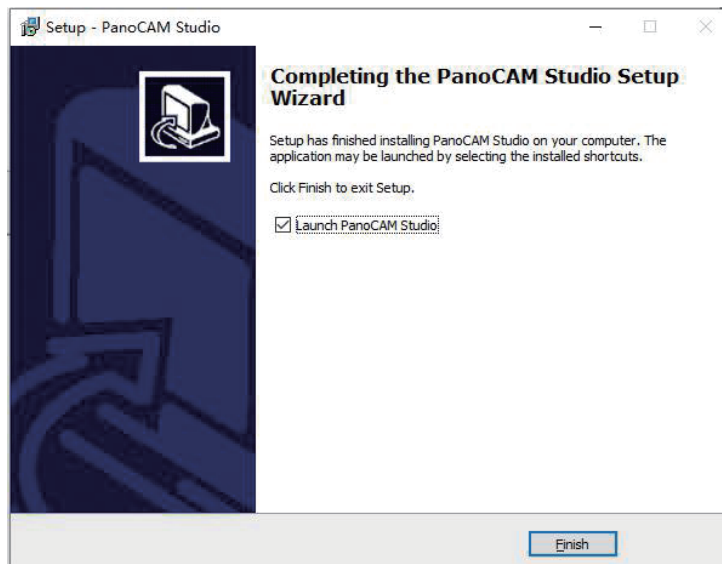
- 3 Double-click on the PanoCAMStudioSetup.exe to start installation;



- 4 Click Install to select a directory for installation;



5 Click Finish to complete the installation.



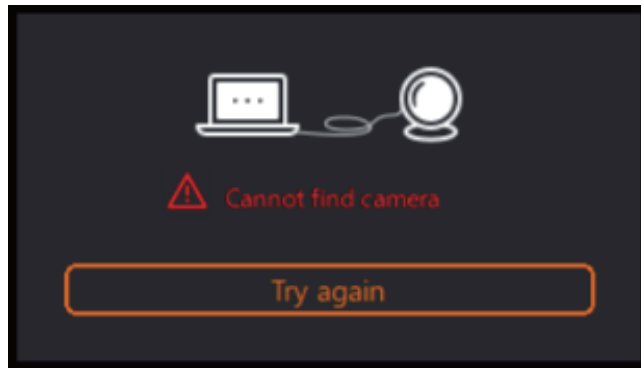
» Instructions for Using the PanoCAM Studio

1. Connect the USB Panoramic Camera

Connect the camera to a computer or a IFP via USB. Run the PanoCAM Studio App on the computer or the IFP (with PC), and the PanoCAM Studio will automatically search for and connect the camera.



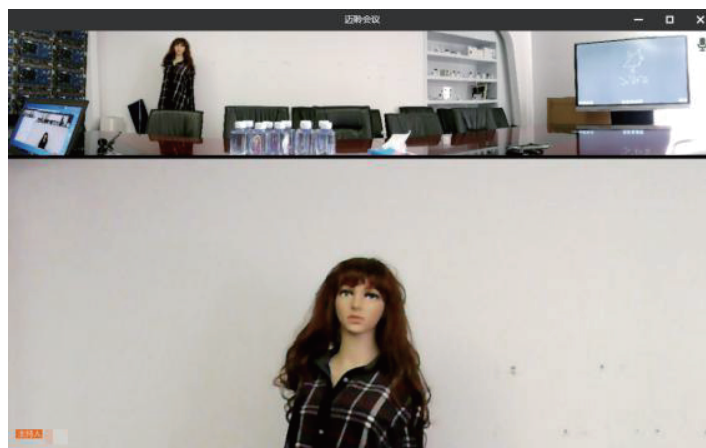
If not, click the “Try Again” button.



Note: If the connection still fails, check to see if the camera is connected to the computer or the IFP , and if the camera is being used by other applications.

2. Turn on face tracking

Select the virtual “Studio Camera” for video conferencing, and face tracking will automatically start. At this point, the PanoCAM Studio window will shrink to a minimum.



The shrunken PanoCAM Studio window:

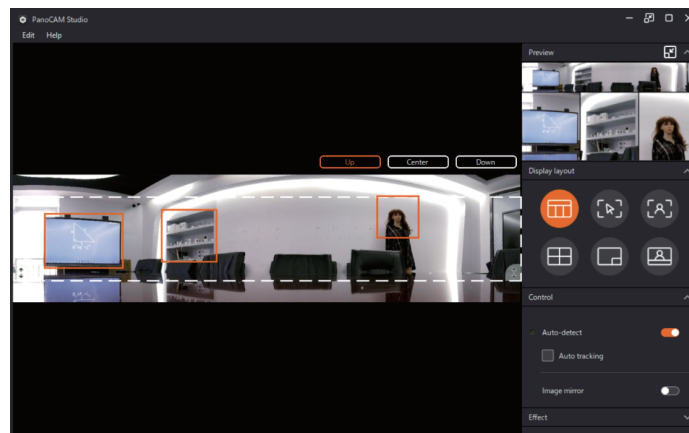


Note: When installing the PanoCAM Studio on Windows 10 and MACOS, the virtual Studio Camera will be automatically installed, whereas on Windows 7 and 8, you will need to manually install it to use face tracking.

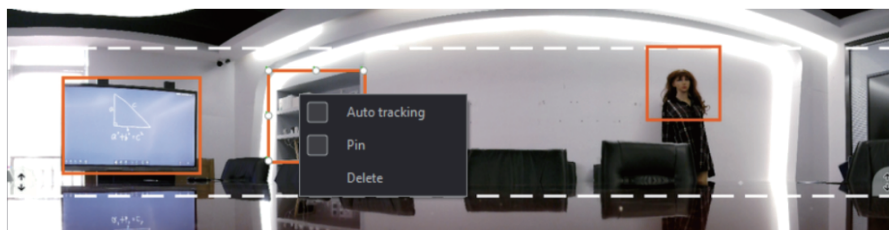
3. Additional features

- 1 Manual box selection

The PanoCAM Studio also supports manual box selection. Simply click on the mouse to draw a frame on the panorama. Click “Edit” – “Clean All” to undo all selections.



Move the mouse over the selected area and right click to open a drop-down menu with 3 options as follows:



Auto tracking: Automatically track the selection box. After clicking, the box turns blue.

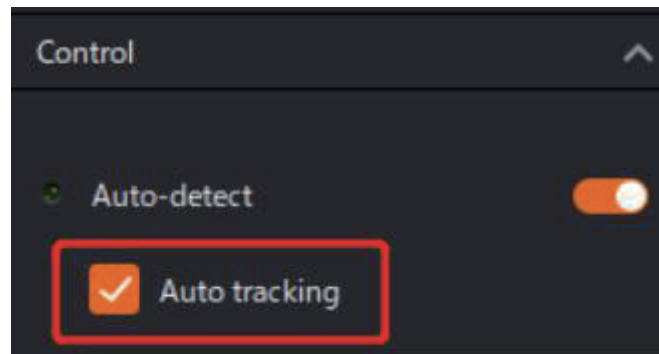
Pin: Fix the selected area so that it is irreplaceable by any other box. When checked, a Pin tag appears in the box.

Delete: Cancel box selection.



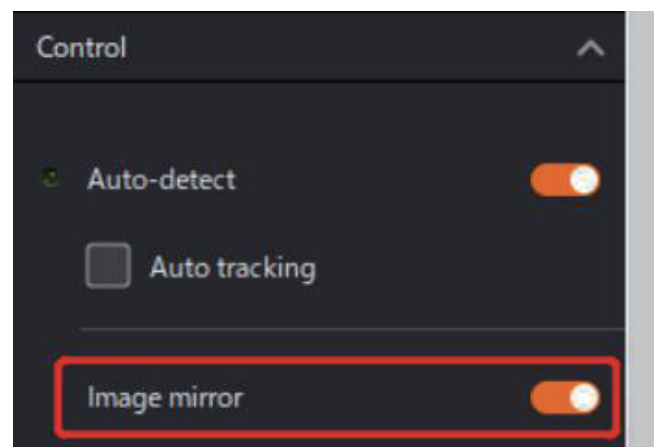
2 Auto tracking

Auto-Detect will be enabled by default when the PanoCAM Studio is turned on. If more sensitive tracking is needed, enable the auto-tracking function by checking "Auto Tracking" .



3 Image mirror

When the image mirror is turned on, the output image from the Studio Camera is mirror-inverted.



4 Tracking modes

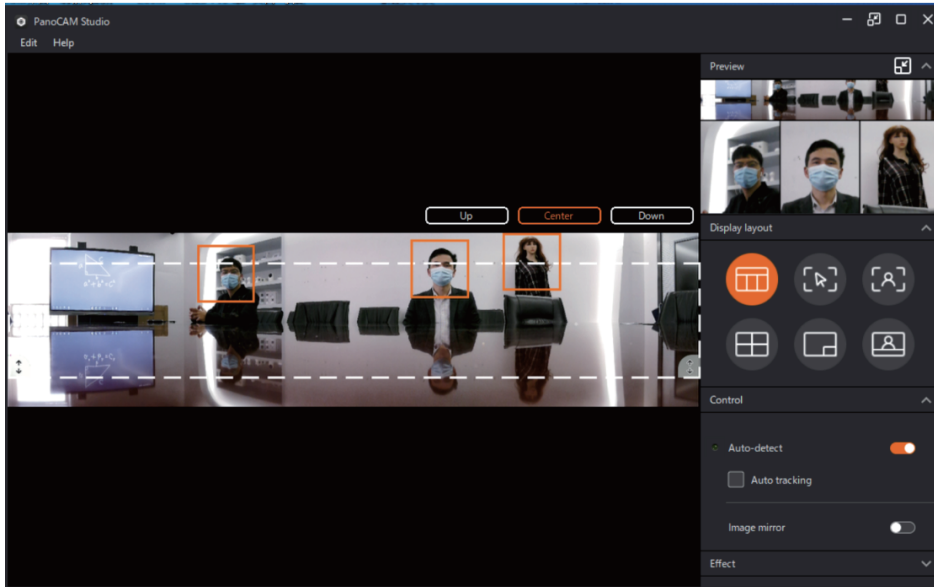


(1) Compose mode

Also known as the conference mode. The output screen presents a panoramic view at the top and close-up boxes of the person being tracked or manual selection boxes at the bottom, with a maximum of 8 close-up boxes.

Notes:

- a. When no person is detected and there is no manual box selection, the output screen shows a panorama at the top and default icons at the bottom;
- b. When the persons detected or the areas of manual box selection are close to each other, they will merge into one close-up box.



Output image:

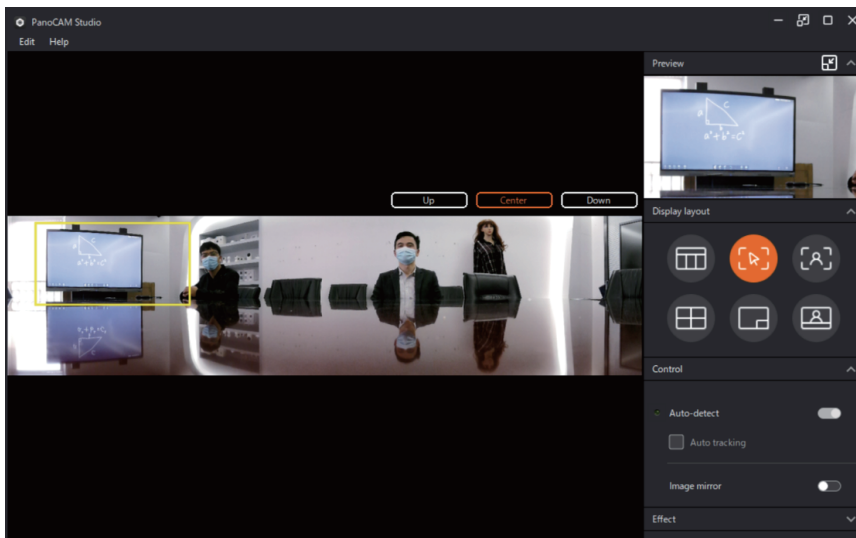




(2) Manual mode

In the manual mode, the output screen shows the area of manual box selection, which can be resized by manually adjusting the box.

Note: Face tracking is not available in the manual mode.



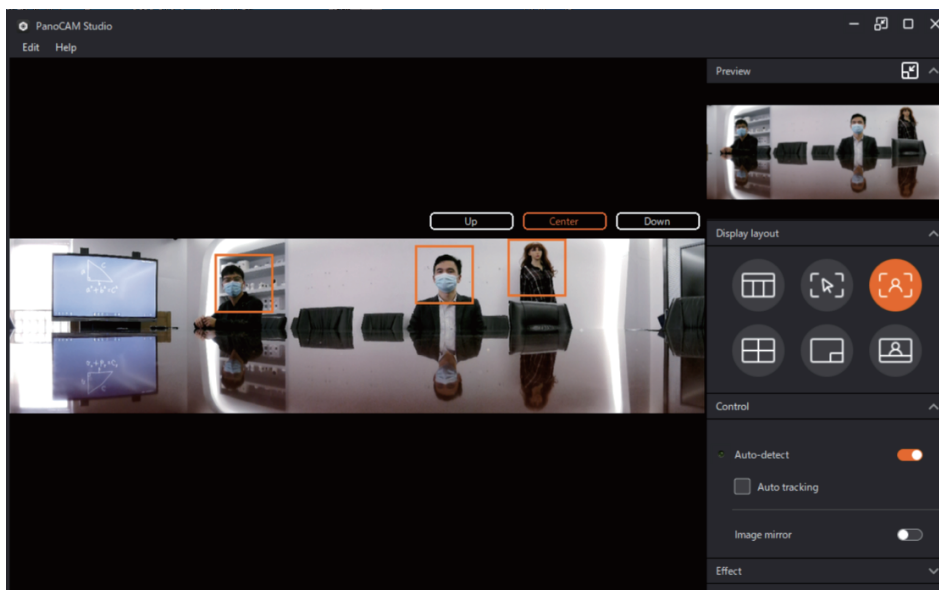
Output image:



(3) Body-fit mode

In the body-fit mode, the output image is a close-up of all the persons being tracked.

Note: When no person is detected and there is no manual box selection, the output screen shows a panorama.



Output image:

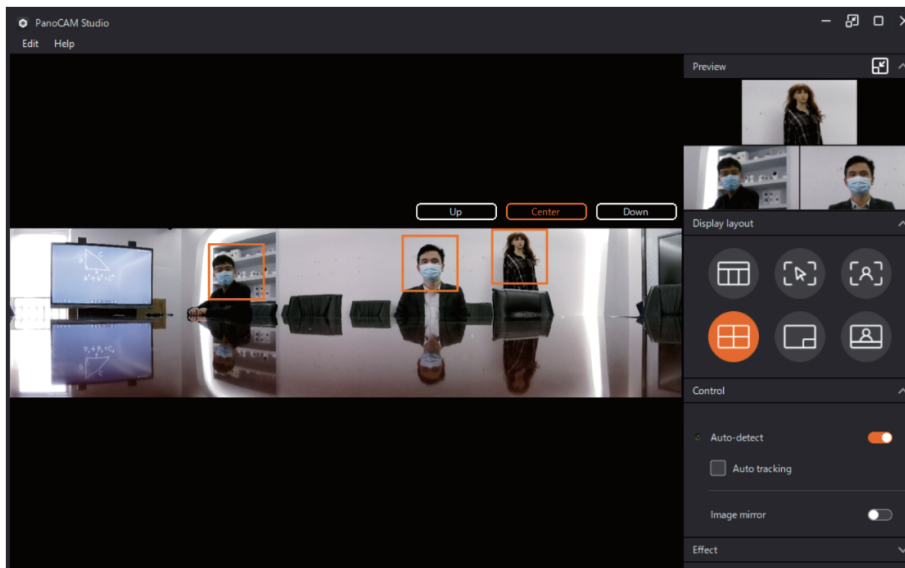


(4) Grid mode

Also known as the group discussion mode, recommended for 1–4 participants. Each person being tracked or each manually selected area is in a separate close-up box, with up to four close-up boxes.

Notes:

- When no person is detected and there is no manual box selection, the output screen shows the default icons.
- When the persons detected or the manually selected areas are close to each other, they will merge into one close-up box, unlike the first mode (i.e., the conference mode).



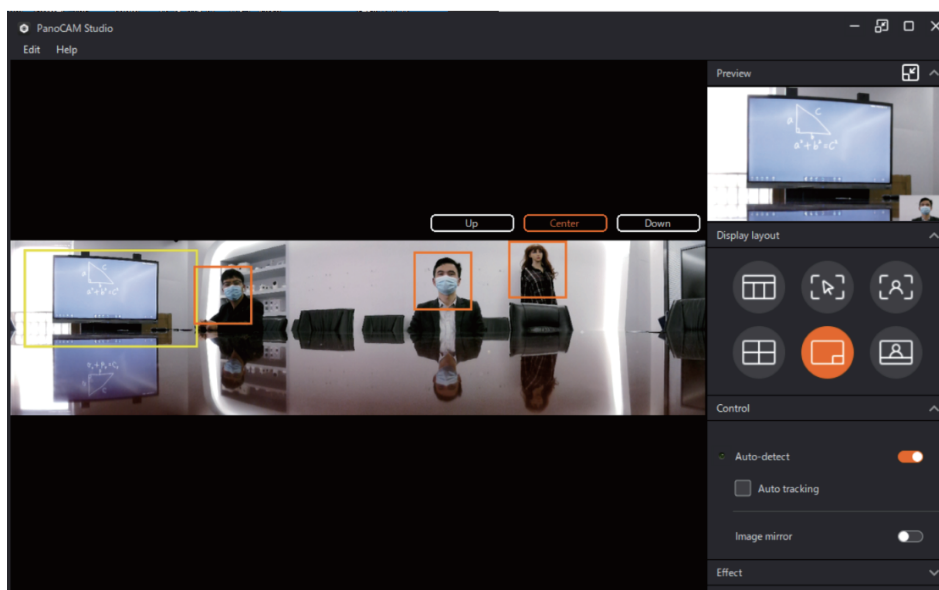
Output image:



(5) Presentation mode

In the presentation mode, the output screen becomes a combo box, with the manually selected yellow box (for displaying content) at the top and the persons detected at the bottom right.

Note: When no person is detected and there is no manual box selection, the output screen shows the area within the yellow box.



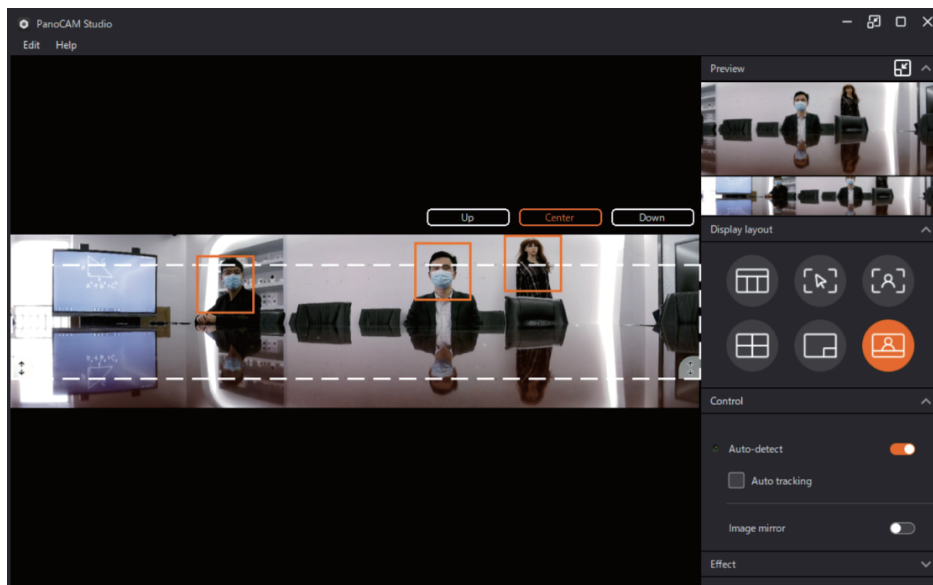
Output image:



(6) Speaker mode

In the speaker mode, the output screen shows the persons detected at the top and a panoramic view at the bottom.

Note: When no person is detected and there is no manual box selection, the output screen shows the default icons at the top and a panorama at the bottom.



Output image:



Note: The PanoCAM Studio can only be installed on a 64-bit operating system on a Windows device.