

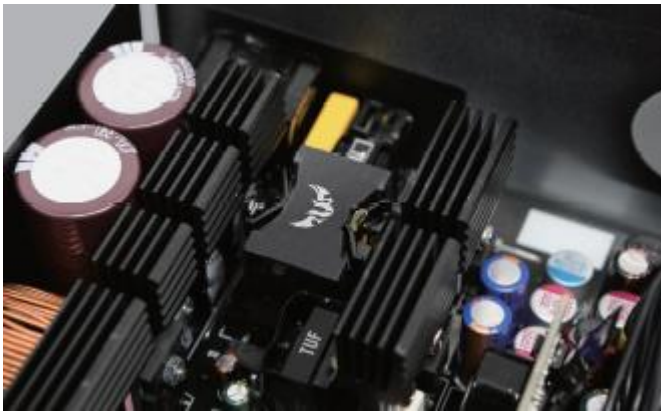


# ASUS TUF Gaming 750W Bronze

## ASUS Exclusive Innovations

### ■ Military-grade Certification

Capacitors and chokes in TUF Gaming PSUs are certified to pass military-grade specifications, ensuring these critical components can survive harsh environmental conditions as well as bumps and vibrations.



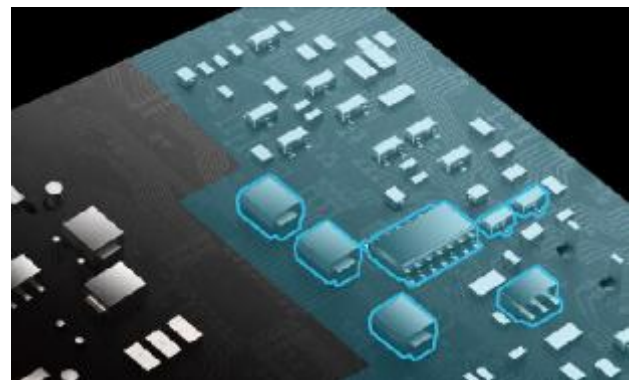
### ■ Dual Ball Fan Bearings

Different bearing types have unique pros and cons. In a PSU, durability is paramount, so we built a dual ball bearing setup that will last up to twice as long as a sleeve bearing design. \*Illustration is for reference only.



### ■ Protective PCB coating

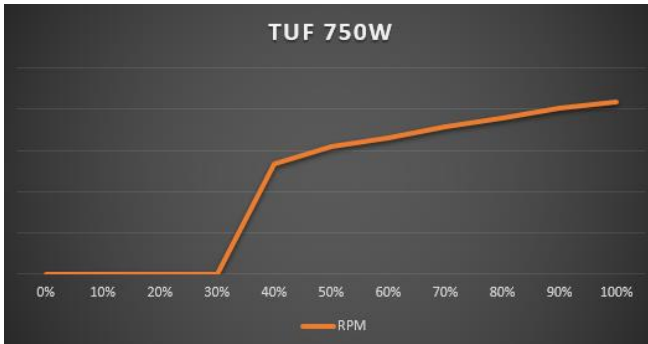
A protective conformal coating envelops the PCB to protect against moisture and dust.





### ■ **0dB Technology**

An onboard controller brings the 135mm fan to a standstill when thermal design power (TDP) is below 30%, letting you enjoy light gaming in relative silence. Above 30% TDP, the fans automatically start up again.



### ■ **Sleeved Cables**

Cables swathed in black sleeving leave your rig looking tactically clean. Also, we lengthen the CPU cable to 800mm to easily DIY the build.



### ■ **Axial-tech Fan Design**

Originally developed for top-end ROG graphics cards, Axial-tech fan design features a smaller fan hub that facilitates longer blades and a barrier ring that increases downward air pressure. For TUF Gaming Series PSUs, we've scaled that design to 135mm so it keeps things cool at low RPMs while producing less noise.





## ASUS Features



- **80 Plus Bronze Certification**

High-quality components ensure efficient and reliable operation worthy of an 80 PLUS Bronze Certification.



- **6-year Warranty**

We're so confident about the reliability of the TUF Gaming Series PSUs that we back them with a 6-year warranty.



## Hardware Specification

<b>Model name</b>	<b>TUF-GAMING-750B</b>				
Intel Specification	ATX 12V				
Efficiency	80 Plus Bronze				
Protection Features	OPP/OVP/UVP/SCP/OCP/OTP				
Hazardous Materials	ROHS				
AC Input Range	100-240Vac				
DC Output Voltage	+3.3V	+5V	+12V	-12V	+5Vsb
Maximum Load	25A	25A	62A	0.8A	3A
Combined Load	130W		744W	9.6W	15W
Total Output	750W				
Connectors	MB 24/20-pin x 1    SATA x 8 CPU 4+4-pin x 2    Peripheral x 4 PCI-E 6+2-pin x 4				
Package Contents (Cable + Accessory)	Power Cord x 1 Motherboard Power Cable x 1 CPU Cable (800mm) x 2 PCI-E Cable x 2 SATA Cable x 2 Peripheral x 1 TUF Gaming sticker x 1				
<b>Dimension</b>					
PSU Size (mm)	150 x 150 x 86 mm				
Color Box (mm)	290 x 200 x 108 mm				
<b>Weight</b>					
Single PSU (KG)	2.18KG				
Product Weight (KG) (with packing)	2.87KG				

**Note:** All specifications are subject to change without notice. Please check with your supplier for exact offers. Products may not be available in all markets. If you do not use the latest and current specifications of ASUS products, you shall be liable for all loss and damage claimed by third party to ASUS based on false advertising or any other issues caused from using false specifications of ASUS products.



**TUF GAMING**

Product Gallery

