

asustor

The Best NAS 4 Flash



NIMBUSTOR 2 Gen2
AS5402T



- Hard Drives + Flash SSDs
= The best of both worlds
- Quad-Core Intel N5105 CPU
- 4GB DDR4 RAM
- 2x 3.5"/2.5" SATA HDD/SSD
- 4x M.2 slots for NVMe SSDs
- USB 3.2 Gen 2 ports
- Enjoy, download, upload and stream content with 4K transcoding
- Supports Wake on LAN and Wake on WAN
- HDMI



Intel Quad-Core



2x 3.5"/2.5" SATA
HDD/SSD



4 GB DDR4-2933



4x M.2 NVMe
SSD Slots



Dual 2.5 Gigabit
Ethernet



3 x USB 3.2
Gen2x1



Performance
King



Boundless
Functionality



Intuitive
UI



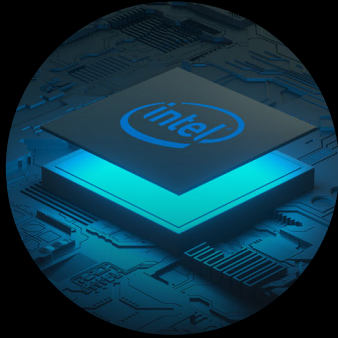
Incredible
Value



3 Years
Warranty

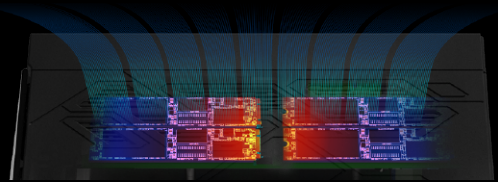
Powered by Intel 10 nm processors

Intel's Quad-Core N5105 CPU comes clocked at 2.0 GHz with boost clocks of up to 2.9 GHz for efficient content creation.



Efficient Cooling

The AS54 series now come with four M.2 slots for NVMe SSDs. The high performance of M.2 SSDs requires heat dissipation and the upgraded chassis reflects the needs of the four M.2 slots found inside. Specially designed cooling vents ensure installed SSDs remain cool and stay at their maximum performance while also remaining aesthetically pleasing.



Four M.2 Slots

The AS54 series come with four M.2 slots for caching, storage or both. Either use all slots for one purpose or mix and match depending on your needs.

Superfast 2.5-Gigabit Ethernet ports

The AS54 series, despite being extremely affordable, contains dual 2.5-Gigabit Ethernet for up to 5 Gbps of performance when combined using SMB multichannel.

SMB Multichannel (RAID 1) Windows Sequential

591 MB/s

Read

497 MB/s

Write



Data Protection Starts with Storage

ASUSTOR understands that your data is priceless, therefore ASUSTOR NAS provides numerous options for protecting your data from a variety of threats. Your data is important and receives numerous levels of protection from the moment it is first stored on the NAS. Take advantage of a variety of data protection features found inside an ASUSTOR NAS, including, but not limited to RAID, easy automatic backups and snapshots. ASUSTOR recommends planning a holistic 3-2-1 backup solution to protect data easily, efficiently and effectively.

| | Single | JBOD | RAID 0 | RAID 1 | RAID 5 | RAID 6 | RAID 10 |
|------------------------------|--------|------|--------|----------|--------|--------|----------|
| Minimum number of disks | 1 | 2 | 2 | 2 | 3 | 4 | 4 |
| Faulty Disks Tolerated | X | X | X | 1 | 1 | 2 | 1 |
| Increased System performance | X | X | V | X | V | V | V |
| Maximum use of Storage space | V | V | V | 🗄️ x 1/2 | 🗄️ -1 | 🗄️ -2 | 🗄️ x 1/2 |

Dr. ASUSTOR

Dr. ASUSTOR monitors your ASUSTOR NAS for abnormalities and keeps check on a variety of settings and data health points in your NAS to ensure your NAS is running well and makes recommendations to help better protect your data.

Dr. ASUSTOR



360° Backup and Virtualization Solution

- Rsync, MyArchive
- Snapshot Center, Cloud Backup Center, DataSync Center
- Complete iSCSI/IP-SAN and NFS support
- VMware, Citrix and Hyper-V ready
- Supports Virtualization and Docker apps



Computer data to NAS



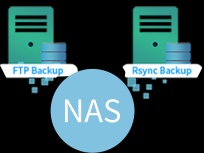
Transfer mobile data to NAS



NAS local backup



Public cloud and NAS data backup



NAS to NAS



NAS backup to external device

Upgraded Security

ADM 4.2 eliminates suspicious behavior and is able to remove or isolate problematic files or viruses in real time. It also incorporates multiple new security measures. Every time you log into ADM and AiMaster, your NAS will detect and provide real-time information for immediate optimization.

Smarter Stability

When your system volume usage approaches 100%, system performance and stability may decrease. ADM strengthens management and monitors your system storage space usage to keep the NAS stable and fast. When usage rates approach 95%, Snapshot Center, in addition to other stability measures in ADM, adds an option to prevent storage space from being completely used up by deleting older unlocked volume snapshots to preserve data integrity while maintaining system stability.



Protected from the Inside and Out

ASUSTOR NAS ensures data security by creating an in-depth data protection plan that protects your data from the inside out. Utilization of a multi-layered deployment scheme allows for extra system and data protection.

Network Attack Protection

- Firewall
- ADM Defender

Secured Data Transmission

- VPN connection
- SSL certificate connection
- Automatic logout

Access Control

- File/Folder/App Isolation
- 2-Step Verification
- Wake-on-LAN (WOL)
- Wake-on-WAN (WOW)

Internal Data

- AES-256 folder encryption
- Antivirus software
- MyArchive



Snapshot Center

Snapshot Center allows ASUSTOR NAS devices to utilize Btrfs and iSCSI volumes to take snapshots of the information inside a NAS. Snapshot Center supports up to 256 snapshots of a volume and can be done every five minutes, creating a backup that can be restored easily if data is damaged or lost. MyArchive also now supports Btrfs and snapshots. Btrfs for MyArchive supports snapshots and version history to help protect against accidental deletions or modifications.



Safer and Easier Scheduled MyArchive Backups

ADM now supports automatic mounting and dismounting of MyArchive drives when backing up important data from an ASUSTOR NAS to a MyArchive drive. ADM will automatically mount a connected MyArchive when a backup begins, and automatically eject a MyArchive drive after the backup is complete. In addition to making performing 3-2-1 backups easier than ever, MyArchive drives are more comprehensively protected from various threats due to a different set of risks that complement the risks to data on a NAS.



Wake on LAN and Wake on WAN – Always on Standby

Save power and money with Wake on LAN and Wake on WAN. ASUSTOR NAS features Wake on LAN and Wake on WAN to allow your NAS to power off when not in use and be woken up with a click. Use Wake on LAN when you are on the same network as the NAS while Wake on WAN is for when you are away from the NAS. Wake on LAN and Wake on WAN also protect against attacks by only waking up to your demands.

Automatic Sync

ASUSTOR EZ Sync brings the magic of cloud sync services right to your home. With an ASUSTOR NAS and EZ Sync, data can be synchronized anywhere with an internet connection without a monthly bill or a data limit. If data is unintentionally modified, restoration is easy with EZ Sync's automatic file history management feature.



Comprehensive Surveillance System

ASUSTOR NAS provides optimal reliability for home and small businesses looking to set up a surveillance system. Four free camera channels are provided, making it an extremely cost-effective surveillance solution for users with smaller demands. The AS5402T supports up to 44 cameras with licenses sold separately. View surveillance feeds on Surveillance Center and its corresponding mobile app AiSecure. AiSecure also supports streams while on the go with an Internet connection.

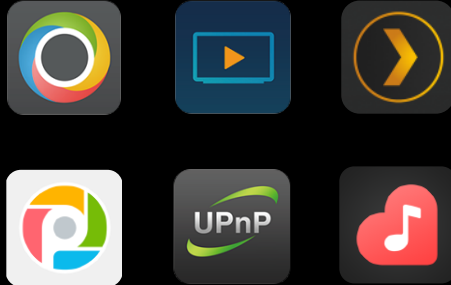
5 Steps - 60 Seconds

- Quick installation wizard
- Automatic camera search
- Add cameras with just one click
- Configure video formats
- Configure recording schedules



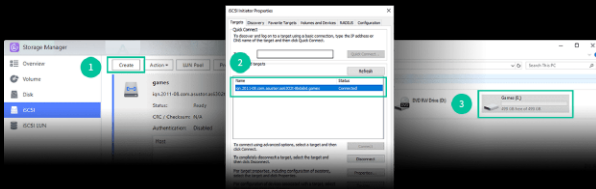
Created for the Digital Home

Your ASUSTOR NAS allows you to enjoy thrilling digital entertainment at any time. Pair the HDMI port on your ASUSTOR on the NAS with various multimedia apps to an UHD TV for maximum enjoyment or similarly use the UPnP multimedia server inside your NAS to stream your favorite media to compatible computers, phones, tablets or set top boxes.



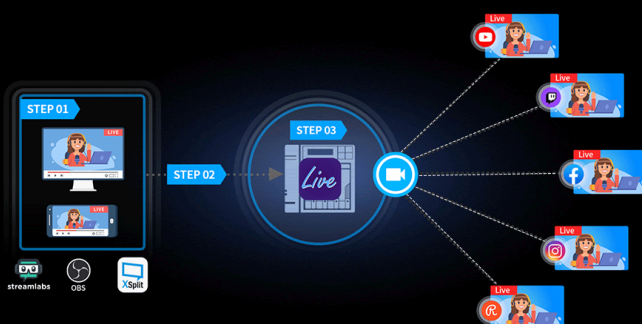
Store Games on an iSCSI Drive

A NAS's enormous capacity helps expand storage for a PC. According to modern operating systems, iSCSI drives appear as local drives and programs which cannot be installed on network shares may be installed. This enables certain games to be played from a NAS when they can't be run on a network share.



ASUSTOR Live

Your own streaming center. Stream from a phone or tablet as well as a computer to multiple streaming platforms, including, but not limited to Twitch, YouTube, Facebook, Instagram, Restream or RTMP compatible platforms. Unlike services like restream.io, ASUSTOR Live doesn't require fees to operate to stream to multiple platforms and channels which saves you money and streaming resources. Recordings can be safely saved to your NAS for future use.



Portainer – Easy Docker Deployments

Even more possibilities for ADM can be done with Portainer for Docker images. With thousands of images, Portainer can download and deploy more types of programs than ever before. Portainer is incredibly user friendly and employs a graphical interface to make Docker images easier to deploy than ever.

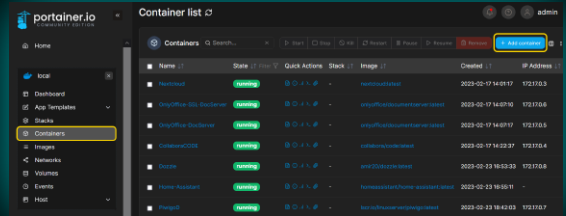


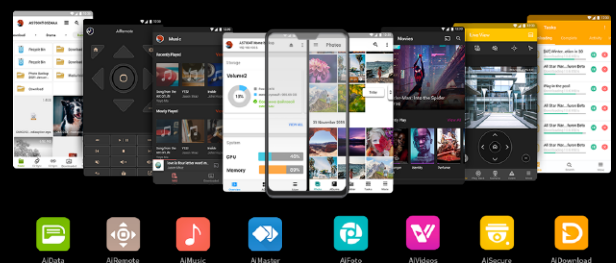
Photo Gallery 3 + AiFoto 3

The all new Photo Gallery 3 and AiFoto 3 have been revamped and brings a variety of new features to make photo organization easier than ever. New features for Photo Gallery 3 include, but not are limited to custom folder selection, timelines, smart albums, new photo modes and photo deduplication. Easily blow up photos to up to twice their size, play songs on slideshows, and customized share links make for an even better photo viewing and sharing experience.



Mobile Apps

ASUSTOR's EZ Connect allows you to connect to your NAS from anywhere with your smartphone to access and share your files. ASUSTOR's suite of mobile apps provide pass code locks to help protect your privacy and data. Make use of HTTPS connections for even more added security when using EZ Connect.



Hardware Specification

NIMBUSTOR 2 Gen2 (AS5402T)

| | |
|--------------------------------------------|-------------------------------------------------------|
| Processor | Intel Celeron N5105 Quad-Core, 2.0 GHz up to 2.9 GHz |
| Memory | 4GB DDR4-2933 SO-DIMM (Expandable. max. 16GB, 8GB x2) |
| Drive Bays | 2x 2½"/3½" SATA III |
| M.2 | 4x M.2 PCIe (NVMe) Support M.2 2280 |
| USB | 3x USB 3.2 Gen 2x1 (1x Front ; 2x Rear) |
| LAN | 2x 2.5-Gigabit (Wake On WAN) |
| Dimensions(HxWxD) | 170x114x230 mm |
| Weight | 1.71kg/3.77lb |
| Power | 65W AC Adapter |
| Operation/Disk Hibernation/Sleep Mode (S3) | 22.9W/12.7W/0.71W |
| Volume Type | Single, JBOD, RAID 0/1 |
| Display Out | 1x HDMI 2.0b |
| Infrared Receiver | Yes |



1. Power Button
2. Power LED Indicator
3. System Status LED Indicator
4. Network LED Indicator
5. USB LED Indicator
6. Hard Disk LED Indicator
7. Infrared Receiver
8. One Touch Backup Button
9. USB 3.2 Gen 2 Port
10. HDD 1
11. HDD 2

1. USB 3.2 Gen 2 Ports
2. HDMI Port
3. 2.5 Gigabit RJ-45 Ports
4. Reset Button
5. DC Input
6. K-lock
7. System Fan

Software & Features

Operating System

- ADM 4.2 Onwards
- Supports Online Firmware Updates
- Built-in App Central for Various Apps

Supported OS

- Windows 7, 8, 10, 11, Server 2003, Server 2008, 2012, 2016, 2019, 2022
- macOS 10.6 Onwards
- UNIX, Linux, BSD

Access Control

- Supports 2-Step Verification
- Supports Batch Creation and Importation of ADM Accounts
- Maximum Number of Users: 4096
- Maximum Number of Groups: 512
- Maximum Number of Shared Folders: 512
- Maximum Number of Concurrent Connections: 512
- Supports Windows Active Directory/LDAP

File Explorer

- Web-based File Management
- ISO File Mounting · Task Monitor
- Thumbnail Previews · Browse Files on Local PC
- Data Access via External Optical Drive
- Supports video playback
- Share Links quick upload

System Administration

- Log Types: System Log, Connection Log, File Access Log
- Real-time Online User Monitor
- Real-time System Monitor
- User Quota
- Virtual Drives (ISO Mounting, Maximum 16)
- UPS Support

Storage Management

- Supports Multiple Volumes with Spare Disks
- Volume Type: Single disk, JBOD, RAID 0/1
- Support for RAID Level Migration
- Support for RAID Capacity Expansion

Disk Management

- Scheduled Bad Block Scans
- Scheduled S.M.A.R.T Scans
- Seagate IronWolf Health Management

External Devices

- Supports USB External Storage Devices
- USB Wi-Fi Dongle Support
- Bluetooth Dongle/Speaker Support
- USB Printer Support
- USB DAC/IR Receiver/Keyboard/Mouse Support
- USB CD ROM Drive/DVD ROM Drive/BD-ROM

Network

- TCP/IP (IPv4 & IPv6)
- Jumbo Frames (MTU)
- VLAN
- SMB Multichannel
- EZ-Connect
- Wireless Network
- DDNS and EZ-Router
- Supports Wake-on-LAN (WOL)
- Supports Wake-on-WAN (WOW)

Network Protocols

- CIFS/SMB, SMB 2.0/3.0, AFP, NFS, FTP (Unicode Supported), TFTP, WebDAV, Rsync, SSH, SFTP, iSCSI/IP-SAN, HTTP, HTTPS, Proxy, SNMP, Syslog

Security

- AES 256-Bit Folder Encryption
- Firewall: Prevent Unauthorized Access
- Alert Notifications:
- Encrypted Connections: HTTPS, FTP over SSL/TLS, SSH, SFTP, Rsync over SSH
- Built-in Hardware Encryption Engine: AS63, 64, Drivestor, Drivestor Pro, Nimbustor (G1-G2), Lockerstor (G1-G2), Lockerstor Pro, Flashstor series

DR. ASUSTOR

- Security advice and health records

Backup Solutions (Two-Way Backup)

- Rsync (Remote Sync) Backup
- SMB Backup
- Cloud Backup
- FTP Backup
- External Backup
- USBOne Touch Backup
- EZ Sync

EZ Sync Manager

- Automatically synchronizes files between a PC and NAS
- Can restore previous versions of files
- Supports file sharing
- AiData now supports accessing EZ Sync files

Supported Browsers

- Firefox, Chrome, Safari, Microsoft Edge

Network Recycle Bin

- Share folder-based
- Maintains original directory structure and file permission
- On-click restore
- Supports scheduled emptying
- Filtering rules: 1.File size 2.File extension
- Deletion Settings: 1.File size 2.File date

Server

- VPN server, SNMP server, RADIUS server, Syslog server, Mail server, DHCP server, Web server, FTP server, Print server, Rsync server

ACL

- Provides both Windows ACL and Linux ACL permission configuration methods
- Can enable Windows ACL for specific shared folders
- Comprehensive support for Windows' 13 types of advanced permission settings
- Can view Windows ACL permission settings from within ADM
- Supports local users and groups
- Exclusive permission reset function allows users to quickly restore default permissions

Snapshot Center

- Btrfs Snapshots
- 256 snapshots
- iSCSI LUNs
- Supported Models: AS31/32/40/50/51/61/62/63/64/70/ Nimbustor/Lockerstor G1-G2/Lockerstor Pro/Flashstor series
- *Snapshot Center will not display Volume snapshots information in other models

Supported Languages

- Deutsch, English, Français, Italiano, Nederlands, Русский, 日本語, 한글, 简体中文, 繁体中文, Česká, Polski, Svenska, Dansk, Norsk, Suomi, Português, Türkçe, Español, Magyar, ગુજરાતી

iSCSI/IP-SAN

- Maximum Targets: 256
- Maximum Snapshot Versions of a Single LUN: 256
- Maximum LUNs: 256
- Target Masking
- LUN Mapping
- ISO File Mounting
- Supports MPIO
- SCSI-3 Persistent Reservations

Featured Apps

- ClamAV Antivirus
- Download Center
- FTP Explorer
- DataSync Center
- Cloud Backup Center
- RADIUS Server
- Mail Server
- DataSync Center
- LooksGood
- Photo Gallery 3
- SoundsGood
- Surveillance Center
- UPnP Media Server
- Surveillance Center
- VPN Server
- VPN Client

Mobile Apps

- AiMaster
- AiFoto 3
- AiMusic
- AiVideos
- AiData
- AiDownload (Android)
- AiSecure
- AiRemote



ASUSTOR Inc.

3F, No.136, Daye Rd., Beitou Dist., Taipei City 112, Taiwan Tel: +886 2 7737 0888 www.asustor.com
Designs and specifications are subject to change without notice. © ASUSTOR Inc. ASUSTOR and all other ASUSTOR product names are trademarks or registered trademarks of ASUSTOR Inc. All other product and company names mentioned herein are the trademarks of their respective owners.

