

Portable

# Canvio Ready

Ready to Store. Simple to Use.



4 2 1  
TB TB TB

Color ●

2.5" 2.5" external hard drive


 SuperSpeed USB 3.2 Gen 1

 USB-powered


EMEA Region, Toshiba Storage Solutions –  
Toshiba's Canvio Ready external hard drive uses  
USB 3.2 Gen 1 technology for transfer speeds of  
up to 5 Gbit/s – and with plug-and-play  
technology, you're able to quickly save and  
secure up to 4 TB of media to a compact,  
portable device. The Canvio Ready includes ramp  
load design that prevents damage to the disk  
while mobile, and a shock sensor that will cut the  
power to protect data in the event of physical  
stress – so you can rest assured that your files are  
safe.



## Manual

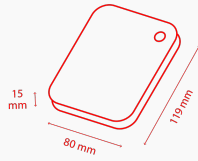
[Canvio-Basics-UBS-C\\_UM\\_barrierfree\\_050126.pdf](#) 

## Tools

[ToshibaStorageDiagnosticTool\\_1.30.8920.zip](#) 



# Product Specifications



## Basic Specifications

<b>Interface</b>	USB 3.2 Gen 1 (USB 2.0 compatible)
<b>Max. transfer rate</b>	~ 5.0 Gbit/s
<b>File system</b>	NTFS (MS Windows) *The drive can be re-formatted to HFS+ file system for full Mac® compatibility.
<b>Power</b>	USB bus power (max. 900mA)

## Box Content

<b>Box Content</b>	Canvio Ready USB 3.2 Gen 1 (Type-A to Micro-B) User's Manual (pre-installed on the hard drive)
--------------------	--

## Physical

<b>Weight (approx.)</b>	2 TB, 1 TB: 149 g 4 TB: 217,5 g
<b>Dimensions</b>	2 TB, 1 TB: 78 x 109 x 14 mm 4 TB: 78 x 109 x 19,5 mm
<b>Enclosure</b>	two-tone matte and gloss finish

# Product Range

Part number	Capacity	Color
HDTP340EK3CA	4 TB	Black
HDTP320EK3AA	2 TB	Black
HDTP310EK3AA	1 TB	Black

# Logistical Information:

Box dimensions	111 x 38 x 141 mm
Box weight (gross)	2TB, 1 TB: 244 g 4 TB: 300 g
Master carton dimensions	123 x 205 x 165 mm
Master carton weight (gross)	2TB, 1 TB: 1.35kg 4 TB: 1.63 kg
Boxes per master carton	5
Pallet dimensions	1150 x 1150 x 130 mm
Pallet weight (net)	22 kg
Units per pallet	1350

## Contact

### **Toshiba Electronics Europe GmbH**

Hansaallee 181  
40549 Düsseldorf  
Germany