

PHILIPS

Wet & Dry epilator

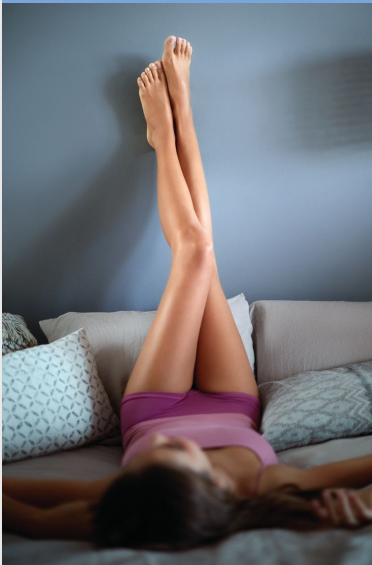
Satinelle Advanced

For legs and body

Ceramic discs grip fine hairs

S-shaped handle design

+ 4 accessories



BRE611/00



Our fastest epilation even on the finest of hairs 2 hair removal routines

Our fastest ever epilator has unique ceramic discs that rotate at a greater speed than ever before and firmly grip fine and short hairs. Enjoy weeks of satin smooth skin and treat your body areas with tailored hair removal methods.

Exceptional results

- Epilation head of unique ceramic material for better grip
- Extra wide epilator head

Easy and effortless usage

- First epilator with S-shaped handle
- Cordless wet and dry for use in bath or shower
- Opti-light helps you target and remove even trickiest hairs

Personalized body care routines

- Includes trimming head and bikini comb
- Delicate area cap to remove unwanted hairs
- Exfoliation glove helps prevent ingrown hairs



asimpleswitch.com

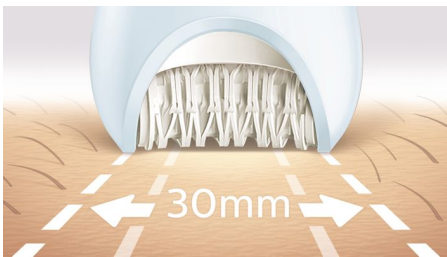
Highlights

Our fastest epilation ever



Our epilator head is unique in being made from a textured ceramic surface that gently extract even the finest hairs and those 4x shorter than wax. Now with faster disc rotation than ever before (2200RPM) for our fastest hair removal.

Extra wide epilator head



Extra wide epilator head covers more skin with every stroke for faster hair removal.

Cordless wet and dry usage



Designed with an anti-slip grip, ideal for use with water. Enables a more comfortable, gentle experience in your shower or bath. You can use it cordless for best convenience.

Ergonomic S-shaped handle



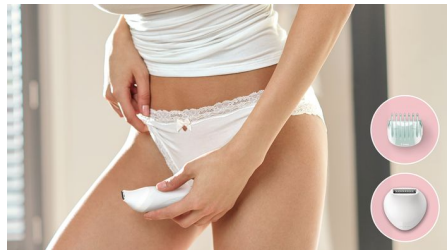
The ergonomic S-shaped handle is easy to steer for maximum control and better reach with natural and precise movements, all over your body.

Opti-Light



Opti-light helps you target and remove even trickiest hairs

Trimming head and bikini comb



It includes a trimming head and bikini comb to trim and shape your intimate areas for more convenience.

Delicate area cap



For more gentleness in all different body areas it includes a delicate area cap for hair from underarm and bikini.

Exfoliation glove



The use of the exfoliation glove helps prevent ingrown hairs in between epilation.



asimpleswitch.com

Philips Green Logo

Philips Green Products can reduce costs, energy consumption and CO2 emissions. How? They offer a significant environmental improvement in one or more of the Philips Green Focal Areas – Energy efficiency, Packaging, Hazardous substances, Weight, Recycling and disposal and Lifetime reliability.

Specifications

Accessories

Delicate area cap
Bikini trimmer head
Bikini trimmer comb
Exfoliation glove
Pouch: Basic pouch
Cleaning brush

Ease of use

Wet and dry use
Opti-light
Cordless
Handle: Ergonomic

Performance

Epilation discs: Ceramic discs
Epilation system: Patented epilation system
Epilator head: Extra wide

Features

Speed settings: 2 settings

Power

Charging: Rechargeable, 1.5 hour charging time
Battery Type: Lithium-ion
Usage time: up to 40 minutes
Quick charge

Technical specifications

Number of discs: 17
Voltage: 15V / 5.4W
Number of tweezers: 32
Tweezing action speed 1: 64000 per minute
Tweezing action speed 2: 70400 per minute

