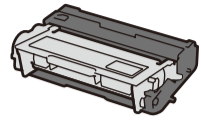
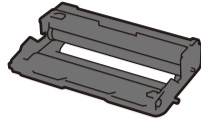




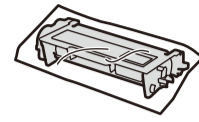
Unpack the machine and check the components



Drum Unit and Toner Cartridge Assembly
(pre-installed in models
DCP-L5500D / DCP-L5500DN /
DCP-L5600DN / DCP-L6600DW /
MFC-L5700DN / MFC-L5750DW /
MFC-L5755DW / MFC-L5900DW /
MFC-L6700DW / MFC-L6800DW /
MFC-L6900DW (For Oceania))



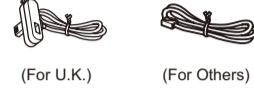
Drum Unit (pre-installed in model
MFC-L6900DW only
(Except for Oceania))



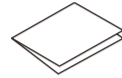
Inbox Toner Cartridge
(model MFC-L6900DW only
(Except for Oceania))



AC Power Cord



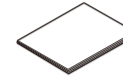
Telephone Line Cord
(For MFC models)



Quick Setup Guide



Product Safety Guide



**Basic User's Guide
or Reference Guide**
(only for certain models)



Installation CD-ROM



Telephone Line Cord Adapter
(Australia only) (For MFC models)

NOTE:

- The available connection interfaces vary depending on the model.
- You must purchase the correct interface cable for the interface you want to use.

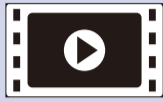
USB cable

We recommend using a USB 2.0 cable (Type A/B) that is no more than 2 metres long.

Network cable

(Except for DCP-L5500D)
Use a straight-through Category 5 (or greater) twisted-pair cable.

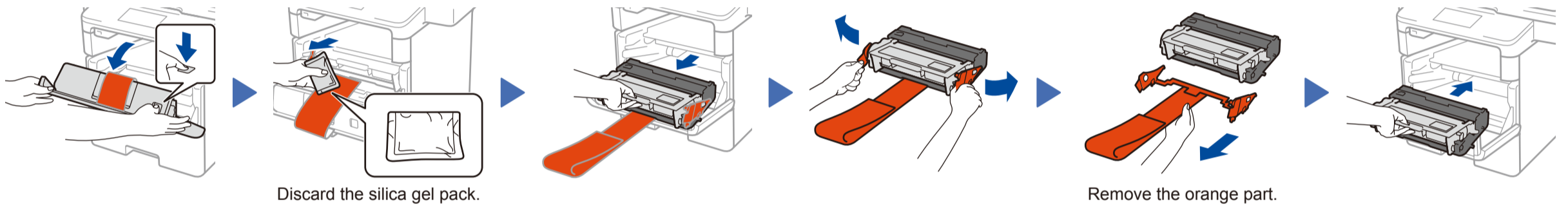
- The illustrations in this Quick Setup Guide show the MFC-L6900DW.



Watch our Video FAQs for help with setting up your Brother machine:
solutions.brother.com/videos.

1 Remove the packing materials and install the drum unit and toner cartridge assembly

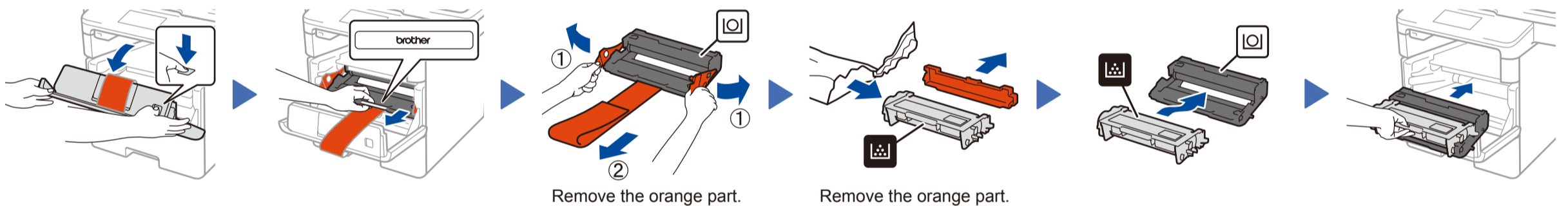
DCP-L5500D / DCP-L5500DN / DCP-L5600DN / DCP-L6600DW / MFC-L5700DN / MFC-L5750DW / MFC-L5755DW / MFC-L5900DW / MFC-L6700DW / MFC-L6800DW / MFC-L6900DW (For Oceania)



Discard the silica gel pack.

Remove the orange part.

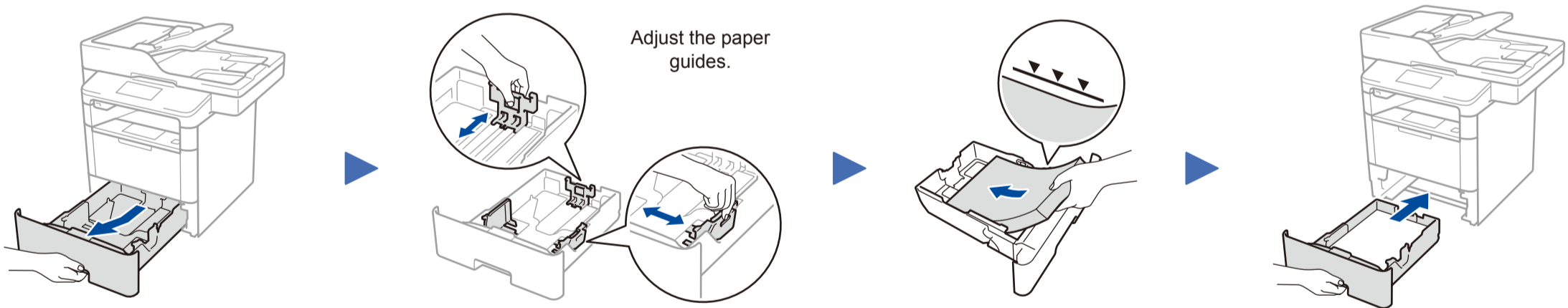
MFC-L6900DW ONLY (Except for Oceania)



Remove the orange part.

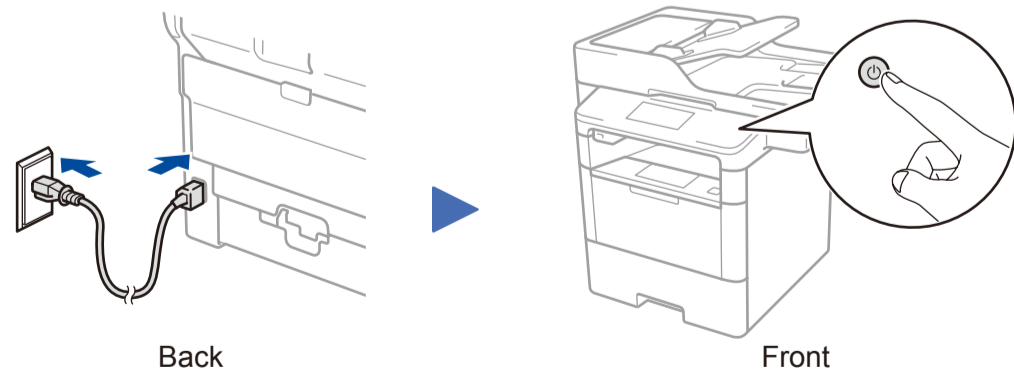
Remove the orange part.

2 Load paper in the paper tray



Adjust the paper guides.

3 Connect the power cord and turn the machine on



Back

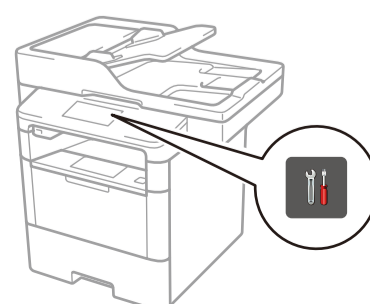
Front

4 Select your country/language (Initial setup only)

After turning the machine on, you may be required to set your country or language (depending on your machine).
If required, follow the on-screen instructions.

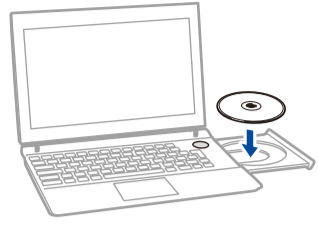
5 Select your language (if needed) (Only for certain models)

- On the machine's Touchscreen, press [Settings] > [All Settings] > [Initial Setup] > [Local Language].
- Press your language.
- Press [Home].



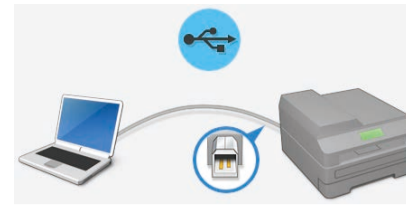
6 Connect your machine and install software

Windows® computer with CD-ROM drive



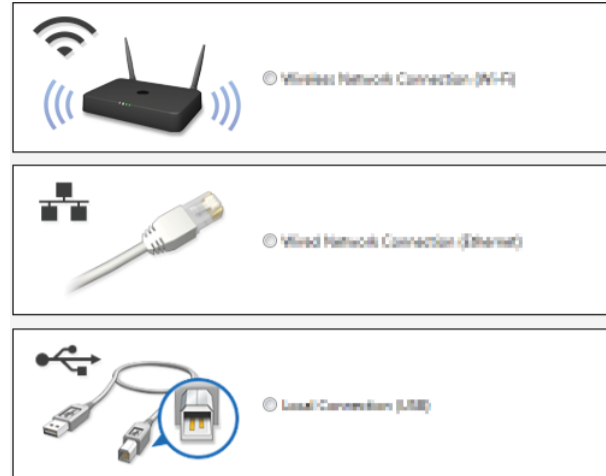
NOTE:
If the Brother screen does not appear automatically, click **(Start) > Computer (My Computer)**.
(For Windows® 8: click the **(File Explorer)** icon on the taskbar, and then go to **Computer (This PC)**.)
Double-click the CD-ROM icon, and then double-click **start.exe**.

■ For DCP-L5500D



■ For other models

Choose your Connection Type:



Macintosh/Windows® computer without CD-ROM drive



Download the full driver and software package from the Brother Solutions Center.
(Macintosh) solutions.brother.com/mac
(Windows®) solutions.brother.com/windows

Follow the on-screen instructions to continue installation.

Finish

NOTE:
If connection is unsuccessful, see **? Cannot set up your machine?** below.

Print and scan using your mobile device (not available for DCP-L5500D)



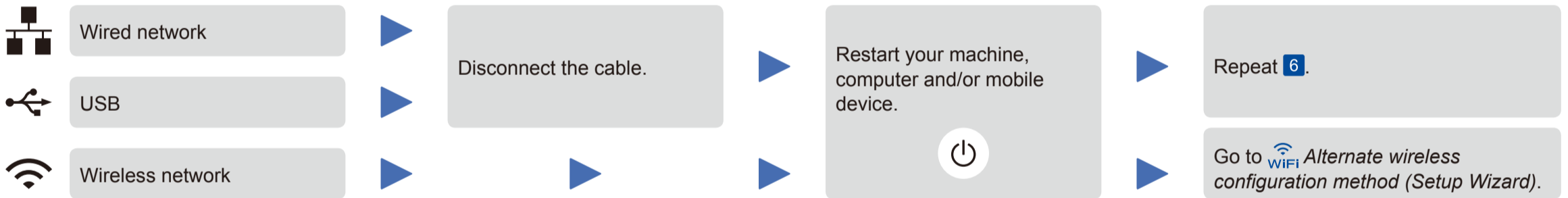
Download "Brother iPrint&Scan" to start using your machine with mobile devices.

solutions.brother.com/ips



AirPrint is available for OS X and iOS users.
For more information, see the *AirPrint Guide* on your model's **Manuals** web page.
solutions.brother.com/manuals

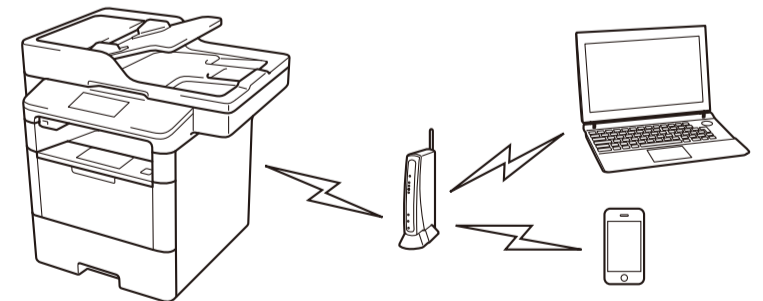
? Cannot set up your machine?



WiFi Alternate wireless configuration method (Setup Wizard)

- Restart your wireless access point/router.
 - Find the SSID and Network key.
 - Press **WiFi** > [Setup Wizard] > [Yes].
 - Select the SSID.
 - Enter the Network key.
- The LCD displays [Connected].

NOTE:
For information on how to enter text, see the printed *Basic User's Guide* or *Reference Guide*.



To use with your computer >> Step **6** *Connect your machine and install software*

To use with your mobile device >> **Print and scan using your mobile device (not available for DCP-L5500D)**

