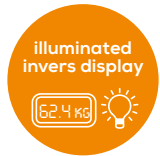




BF 720

beurer
wellbeing

BF 720 Diagnostic bathroom scale



Illuminated 2 line LCD display



Innovative networking between smartphone and scale.

With free app "beurer HealthManager Pro" / "beurer Health Manager"



3 touch sensitive buttons for control (without the app)



With *Bluetooth*[®] low energy technology - keep track of your measurements and body data at home and on the move

Including "beurer HealthManager Pro" / "beurer HealthManager" App for downloading

(analysis records and graphical evaluations of body values)

Automatically data transfer within the *Bluetooth*[®] range if the app is open

Scale can be used in its entirety without the app because of the buttons (for user administration and manual user assignment)

Black LCD display with white illuminated digits

Digit size: 23 mm

Displays 3 initials of the user

Electrodes made of brushed stainless steel

Display of body weight, body fat, body water, muscle ratio, bone mass, AMR/BMR and BMI

Graduation:

- 0.1% body fat, body water, muscle ratio

- 100 g for body weight, bone mass

5 levels of activity

Change over to kg/lb/st

Capacity: 180 kg

8 user memories with automatic user recognition

Overload indication

Automatic switch on and off

3 x 1.5V AAA batteries included

Product measurements (LxWxH): 30 x 30 x 2.5 cm

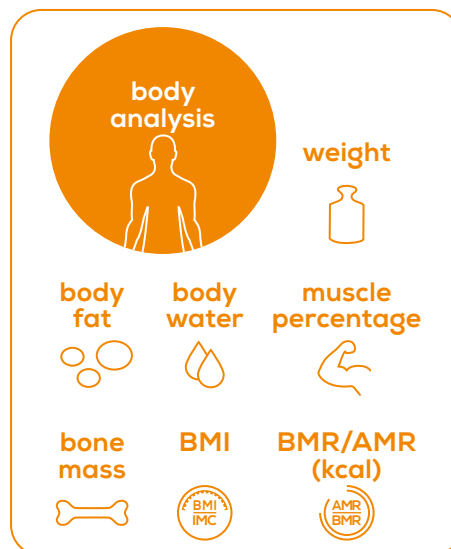
Product weight: approx. 1600 g

5 year guarantee

Sales unit: 3 / Shipping carton: -

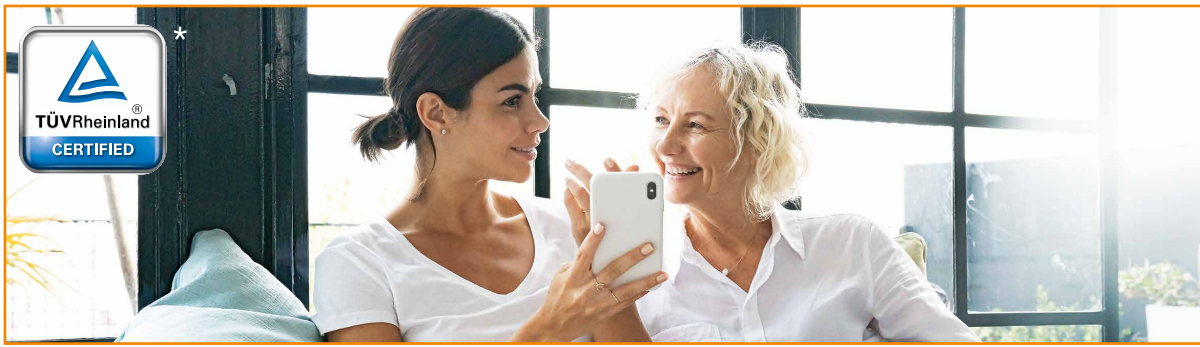
EAN no.: 4211125 74938 5

Item no.: 749.38



749.38_BF720_2021-11-19_02_DS_EN_BEU Subject to errors and changes

* tested online application "beurer HealthManager" Cloud



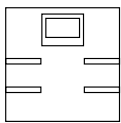
BF 720

beurer
wellbeing

BF 720 Diagnostic bathroom scale



CONNECTION



Innovative networking between smartphone and scale - keep track of your measurements and body data at home and on the move. Easily synchronised with your smartphone via *Bluetooth*



System requirements:

- iOS ≥ 12.0
- Android™ ≥ 8.0
- Bluetooth® 4.0



List of supported smartphones

749_38_BF720_2021-11-19_02_DS_EN_BEU Subject to errors and changes

The *Bluetooth*® word mark and logos are registered trademarks owned by Bluetooth SIG, Inc. and any use of such marks by Beurer GmbH is under license. Other trademarks and trade names are those of their respective owners.

Apple and the Apple logo are trademarks of Apple Inc., registered in the U.S. and other countries. App Store is a service mark of Apple Inc., registered in the U.S. and other countries.

Google Play and the Google Play logo are trademarks of Google LLC. Android is a trademark of Google LLC.

Android is a trademark of Google LLC.