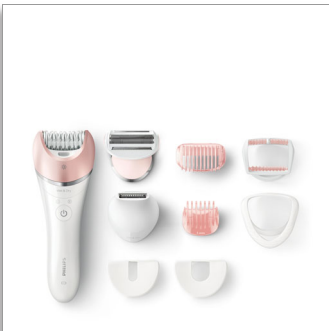




Philips Satinelle Advanced
Wet & Dry epilator

For legs, body and face

8 accessories
Cordless and Rechargeable
S-shaped handle design



BRE640/00

Firmly grips even fine hairs

Easy to steer for effortless long lasting results

The S-shaped handle helps steer all over the body. The widest head with ceramic discs epilates close to the skin to grasp even fine hairs for quick and long lasting results. Wet & dry use with 8 accessories for personalized beauty routine.

Easy and effortless usage

- First epilator with S-shaped handle
- Wet and dry for use in bath or shower
- Unique light ensures you don't miss fine hairs

Thorough results

- Epilation head of unique ceramic material for better grip
- Widest epilation head for optimal hair removal in one stroke
- Patented epilation system

Personalized body routine solutions

- Body care heads for personalized and convenient solutions
- Includes trimming head and bikini comb
- Shaving head and trimming comb for a close shave
- Facial area and delicate area cap to remove unwanted hairs
- Includes massage cap
- Includes skin stretcher

PHILIPS

Wet & Dry epilator

For legs, body and face 8 accessories, Cordless and Rechargeable, S-shaped handle design

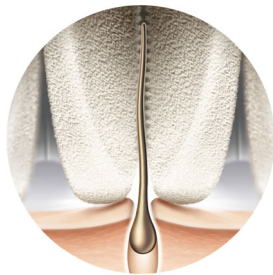
Highlights

Ergonomic S-shaped handle



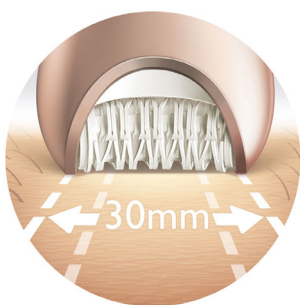
The ergonomic S-shaped handle is easy to steer for maximum control and better reach with natural and precise movements, all over your body.

Micro ridged ceramic discs



Our epilator head is unique in being made from a rough ceramic material that grabs hair firmly, even fine hairs won't slip from its grip.

Widest epilation head



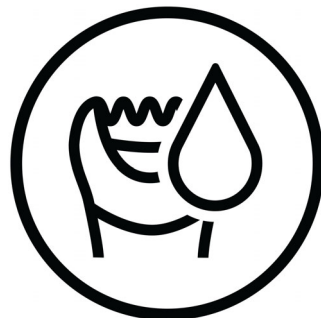
Widest epilation head for optimal hair removal in one stroke for long lasting results.

Patented epilation system



All of our Philips epilators have a unique system where the tweezers lift and gather the lying hair, guide them to the pulling point firmly grabbing and pulling out the hair. Combined with the unique round ceramic discs it epilates closer to the skin for optimal results and more gentleness.

Wet and dry use



For a gentle and comfortable use during your shower or bath routine with anti slip grip for optimal wet and dry use.

Opti-light



Unique light ensures you don't miss fine hairs for best epilation results for all body parts.

BRE640/00

Body care heads

Body care heads will bring more personalized and convenient solutions to her individual beauty routine for hair removal and beyond.

Trimming head and bikini comb



It includes a trimming head and bikini comb to trim and shape delicate areas for more convenience.

Shaving head and trimming comb



The shaving head and trimming comb provide close shave and more gentleness in different body areas.

Facial and delicate area cap



For more gentleness in all different body areas it includes a facial area cap which removes unwanted facial hairs and a delicate area cap for hair from underarm and bikini.

Specifications

Accessories

- Bikini trimmer head
- Bikini trimmer comb
- Shaving head
- Trimming comb
- Facial area cap
- Delicate area cap
- Massage cap
- Skin stretcher cap
- Pouch: Premium pouch
- Cleaning brush

Ease of use

- Wet and dry use
- Opti-light
- Cordless
- Handle: S-shape handle

Performance

- Epilation discs: Ceramic discs

- Epilation system: Patented epilation system
- Epilator head: 30 mm

Features

- Speed settings: 2 settings

Power

- Battery Type: Li-ion
- Usage time: up to 40 minutes
- Charging: Quick charge, Rechargeable, 1.5 hour charging time

Technical specifications

- Number of catching points: 32
- Number of discs: 17
- Pulling actions/second speed 1: 960
- Pulling actions/second speed 2: 1066
- Voltage: 15V / 5.4W



Issue date 2016-02-29

Version: 1.3.1

© 2016 Koninklijke Philips N.V.
All Rights reserved.

Specifications are subject to change without notice.
Trademarks are the property of Koninklijke Philips N.V.
or their respective owners.

www.philips.com