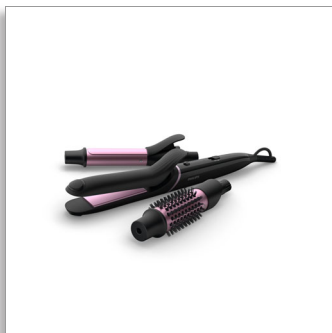




Philips StyleCare
Multi-Styler

15+ styles in a box

15 attachments & accessories
Style Guide
OneClick Technology



BHH822/00

More styles on demand

15 attachments and style guide for various looks

Every day a different look! From perfectly polished, straight, volumized, curly hair to updos and more, create more than 15 styles with the new Philips Multi-Styler with style guide.

Beautifully styled hair

- 80mm straightener for sleek results
- 25mm curling barrel for tight to loose curls
- 32mm hot brush for luxurious volume
- Style guide and 11 useful hair accessories for 15+ styles

Ease of use

- OneClick Technology for quick and easy attachment changing
- 160°C to 210°C styling temperature settings
- Fast heat up time, ready to use in 45 sec
- LED indicator for styling with optimal temperature
- Auto shut-off for safe usage
- 1.8 m power cord
- Swivel cord to prevent tangled wires

Care for your hair

- Protective ceramic coating

PHILIPS

Multi-Styler
15+ styles in a box 15 attachments & accessories, Style Guide, OneClick Technology

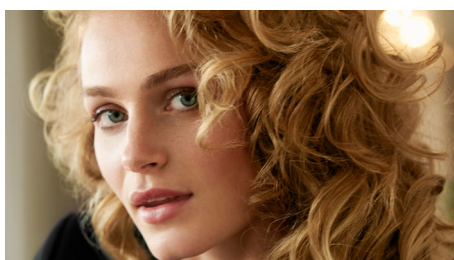
Highlights

Straightener for sleek results



80mm straightening plates for perfect sleek results.

Curler for fabulous curls



25mm curling barrel for perfect tight to loose curls.

Hot brush for luxurious volume



Simply brush your hair for creating perfectly voluminous results.

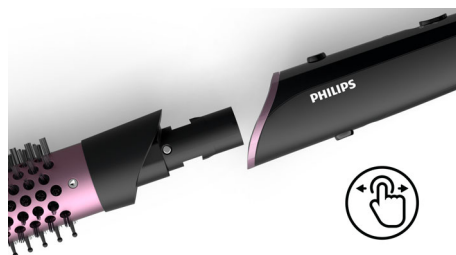
11 versatile hair accessories



Including a style guide and all accessories you need to create 15+ styles! The style kit

includes 2 elastic bands, 4 elastic mini scrunchies, a hair clip and 4 bobby pins, a comb and 2 spiral grips for easy hairstyling. A hair loop, pull hair pin, hair grip, banana clip and a side comb will enable you to experiment and create fabulous styles!

OneClick release technology



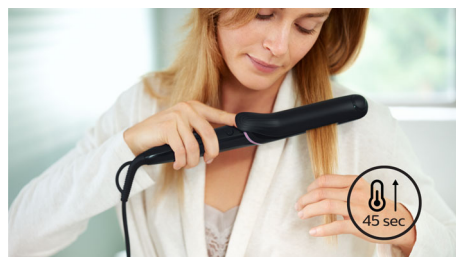
Changing attachments has never been quicker or easier with the multi-styler's OneClick design. Simply click on and push the button, holding the cool tip, to release.

2 temperature settings



2 temperature settings for perfect results. Choose from a professional high temperatures for straightening to achieve long lasting results while caring for your hair.

Fast heat up time



This styler has a fast heat up time, being ready to use in 45 seconds.

BHH822/00

Ready to style indicator



The ready to use indicator shows when the styler has reached the right temperature. The soft, white LED light changes from a soft pulse to constant to easily show when it's ready for use.

Gentle on your hair



Protective ceramic coating ensures even heat distribution and less hair damage for shiny and soft hair.

Auto shut-off



This styler has been equipped with an automatic shut-off feature. This feature has been designed to provide peace of mind. If left on, the appliance will automatically switch off after 60 min.

Specifications

Attachments

- Curler
- Straightener
- Hot brush

Accessories

- Style guide: with 15 easy to create styles
- Elastic band: 2
- Hair loop
- Hair clips
- Hair pins: 4
- Banana clip
- Elastic mini scrunchy: 4
- Spiral grip: 2
- Comb
- Hair grip
- Pull hair pin
- Side comb

Features

- Coating of heated parts: Ceramic

- Barrel diameter: Curler 25 mm
- Barrel diameter: Heated brush 32mm
- Straightener size: 30x80 mm
- Cool tip
- Swivel cord
- Storage hook
- OneClick release technology

Technical specifications

- Heat settings: 2
- Styling temperature: 180°C - 210°C
- Heater type: PTC
- Heat-up time: 45 sec
- Cable length: 1.8 m
- Plate size: Curler 90 mm, Heated brush 90 mm
- Voltage: 110-240V

Service

- 2-year worldwide guarantee



Issue date 2017-07-24

Version: 1.2.1

© 2017 Koninklijke Philips N.V.
All Rights reserved.

Specifications are subject to change without notice.
Trademarks are the property of Koninklijke Philips N.V.
or their respective owners.

www.philips.com