

Philips Business Monitor
LCD monitor

5000 series

27" (68.5 cm)
2560 x 1440 (Quad HD)

27B2G5500



Incredible efficiency meets ultra power saving

This monitor is built for energy efficiency. With its LightSensor and PowerSensor, these two features combine to make a power-saving monitor that makes for a great all-around option for your office.

Brilliant performance

- 100Hz Fast Refresh: for ultra-smooth images
- IPS technology for full colors and wide viewing angles

Eco-friendly materials for sustainability

- 100% recyclable material & FSC certified packaging
- Built with 85% PCR and 5% ocean-bound plastics

Energy efficiency - Eco-conscious power savings

- LightSensor for the perfect brightness with minimal power
- PowerSensor saves up to 70% energy costs

Designed for comfortable productivity

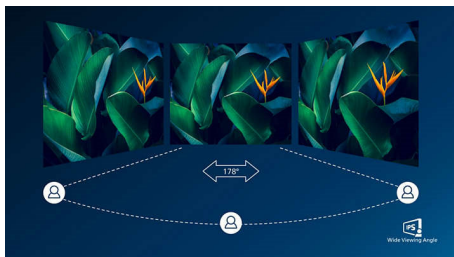
- Eyesafe certified blue light protection and color accuracy
- SoftBlue Technology: for comfortable viewing
- LowBlue mode and Flicker-free easy-on-the eyes viewing

PHILIPS

LCD monitor
5000 series 27" (68.5 cm) , 2560 x 1440 (Quad HD)

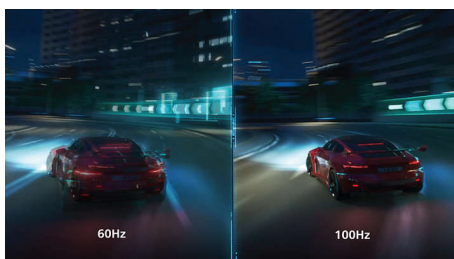
Highlights

IPS technology



IPS displays use an advanced technology which gives you extra wide viewing angles of 178/178 degree, making it possible to view the display from almost any angle - even in 90 degree Pivot mode! Unlike standard TN panels, IPS displays gives you remarkably crisp images with vivid colors, making it ideal not only for Photos, movies and web browsing, but also for professional applications which demand color accuracy and consistent brightness at all times.

100Hz Fast refresh



This Philips display redraws the screen image up to 100 times per second which makes this monitor much faster than a standard display. With a 100Hz frame rate, gamers are able to find those critical images on the screen that show enemy movement in an ultra-smooth motion so that they are easily targetable.

Eco-Friendly Packaging



This monitor comes in packaging that is not only made of 100 percent recyclable material

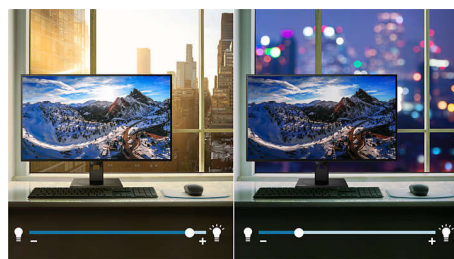
but is also FSC-certified. This type of certification ensures that your monitor's packaging is made with the environment and sustainability in mind.

EcoSmart materials



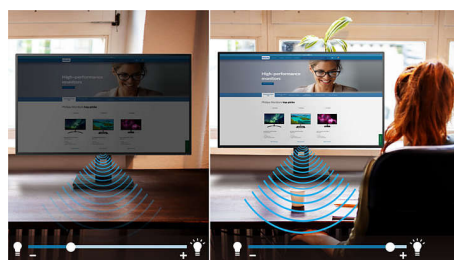
Being Eco-friendly means repurposing old materials. That's why this Philips monitor is made with 85% post-consumer recycled plastics and 5% ocean-bound plastic, therefore making a concerted effort to reduce waste.

LightSensor



LightSensor uses a smart sensor to adjust the picture brightness depending on the room light conditions for the perfect picture with minimal power usage.

PowerSensor



PowerSensor is a built-in 'people sensor' that transmits and receives harmless infrared signals to determine if user is present and automatically reduces monitor brightness when user steps away from the desk, cutting

27B2G5500/00

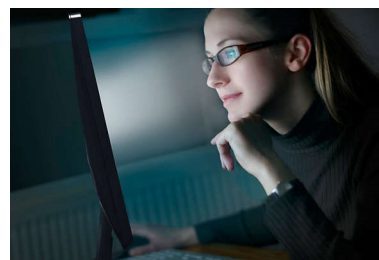
energy costs by up to 70 percent and prolonging monitor life.

TUV Rheinland Eyesafe - RPF® 40



Philips display meets TUV Rheinland Eyesafe® standard to truly protect you from the long exposure to blue light. The always-on blue light filter not only helps reduce digital eye strain, but also guarantees color integrity.

SoftBlue Technology



SoftBlue LED technology, combined with the monitor's low blue light panel, is an effective solution to reducing the adverse health effects caused by high exposure to blue light. In this monitor's panel, the ratio of light is reduced by nearly 50 percent while the SoftBlue LED technology works simultaneously by reducing harmful blue light rays emitted from the screen. Not to mention, the SoftBlue LED technology is tested and certified by TUV Rheinland Eyesafe for its effectiveness in reducing blue light emissions.



Specifications

Picture/Display

- Panel Size: 27 inch/68.5 cm
- Aspect ratio: 16:9
- LCD panel type: IPS LCD
- Backlight type: W-LED system
- Pixel pitch: 0.2331x0.2331mm
- Optimum resolution: 2560x1440@60Hz
- Brightness: 300 cd/m²
- Display colors: 16.7M (true 8 bits)
- Color gamut (typical): sRGB: 108%, NTSC: 94% *
- Contrast ratio (typical): 1500:1
- SmartContrast: 50,000,000:1
- Response time (typical): 4 ms (Gray to Gray)*
- Viewing angle: 178° (H) / 178° (V), @ C/R > 10
- Picture enhancement: SmartImage
- Maximum resolution: 2560x1440@100Hz
- Effective viewing area: 596.74(H)x335.66(V) mm
- Scanning Frequency: 30k-150 kHz (H) / 48 -100 Hz (V)
- sRGB
- SoftBlue
- Flicker-free
- Pixel Density: 109 PPI
- LowBlue Mode
- Display Screen Coating: Anti-Glare, 3H, Haze 25%
- EasyRead
- Adaptive sync

Connectivity

- Signal Input: HDMI 2.0 x 2, DisplayPort 1.4 x 1
- Sync Input: Separate Sync, Sync on Green
- Audio (In/Out): Audio out
- HDCP: HDCP 1.4 (HDMI/ DisplayPort); HDCP 2.2 (HDMI/ DisplayPort)
- USB Hub: USB3.2, Gen1, 5G; Upstream: USB-Bx 1; Downstream: USB 3.2x 4, (with 1 for fast charge B.C 1.2)

Convenience

- Built-in Speakers: 3W x 2
- Plug & Play Compatibility: DDC/CI, Mac OS, sRGB, Windows 11 / 10
- User convenience: SmartImage, Input, Brightness, Menu, Power On/Off
- OSD Languages: Brazil Portuguese, Czech, Dutch, English, French, Finnish, German, Greek, Hungarian, Italian, Japanese, Korean, Portuguese, Polish, Russian, Simplified Chinese, Spanish, Swedish, Traditional Chinese, Turkish, Ukrainian
- Other convenience: Kensington lock, VESA mount (100x100mm), Earphone hook
- Control software: SmartControl

Stand

- Height adjustment: 150 mm
- Pivot: -/+90 degree
- Swivel: -/+180 degree
- Tilt: -5/30 degree

Power

- ECO mode: 8.3 W (typ.)
- Power supply: Built-in, 100-240VAC, 50-60Hz
- Off mode: 0.3W (typ)
- On mode: 11.11 W (typ.) (EnergyStar test method)
- Standby mode: 0.3 W (typ.)
- Power LED indicator: Operation - White, Standby mode- White (blinking)
- Energy Label Class: B

Dimensions

- Packaging in mm (WxHxD): 730 x 445 x 159 mm
- Product without stand (mm): 614 x 368 x 58 mm
- Product with stand(max height): 614 x 543 x 235 mm

Weight

- Product with packaging (kg): 9.77 kg
- Product with stand (kg): 6.77 kg
- Product without stand (kg): 5.01 kg

Operating conditions

- Altitude: Operation: +12,000ft (3,658m), Non-operation: +40,000ft (12,192m)
- Temperature range (operation): 0°C to 40 °C
- Relative humidity: 20%-80 %
- Temperature range (storage): -20°C to 60 °C
- MTBF (demonstrated): 70,000 hrs (excluded backlight)

Sustainability

- Environmental and energy: EnergyStar 8.0, EPEAT*, RoHS, PowerSensor, LightSensor
- Post consumer recycled plastic: 85%+OBP 5%
- Recyclable packaging material: 100 %
- Specific Substances: Mercury free, PVC / BFR free housing

Compliance and standards

- Regulatory Approvals: CB, CE Mark, EPA, EnergyStar, TUV/GS, TUV Ergo, TCO Certified, EAC, EAEU RoHS, UKCA, EMF, FCC, ICES-003, TUV Eyesafe certified

Cabinet

- Finish: Texture
- Foot: Silver
- Front bezel: Charcoal
- Rear cover: Charcoal

What's in the box?

- Cables: HDMI cable, DisplayPort cable, Power cable
- Monitor with stand
- User Documentation



Issue date 2024-11-21

Version: 3.3.0

EAN: 87 21038 00178 5

© 2024 Koninklijke Philips N.V.
All Rights reserved.

Specifications are subject to change without notice.
Trademarks are the property of Koninklijke Philips N.V. or their respective owners.

www.philips.com

* Response time value equal to SmartResponse

* sRGB Area based on CIE1931, NTSC Area based on CIE1976.

* When calculating energy costs saving from PowerSensor, both USB and Power delivery are excluded.

* EPEAT rating is valid only where Philips registers the product. Please visit <https://www.epeat.net/> for registration status in your country.

* The monitor may look different from feature images.

* The products and accessories listed on this leaflet may differ by country and region.