

# PHILIPS



Full HD gaming  
monitor

Fast IPS Gaming  
monitor

Evnia 5000

25 (24.5"/62.2 cm diag.)

1920 x 1080 (Full HD)



25M2N5200U

## Your gaming experience to the utmost

This monitor is all about speed. Ringing in at 390 Hz, gamers can successfully overclock to reach trail-blazing rates. Not to mention, this Evnia monitor maintains incredible image quality at any pace with its DisplayHDR 400 standard.

### Features designed for gamers' needs

- Stark ShadowBoost: for enhancing visibility in dark scenes
- Evnia Precision Centre: Maximise Your Gaming Experience
- Smart MBR: for reducing motion blur.
- SmartImage game mode optimised for gamers
- LowBlue mode and Flicker-free easy-on-the eyes viewing
- Smart Crosshair: for better aim and more fun

### Built for fast action

- 390 Hz refresh rates for silky-smooth and vivid imagery
- 0.3 ms ultra-fast speed for crisp image and smooth gameplay
- Low input lag reduces time delay between devices to monitor

### Immersive visuals

- SmartContrast for rich black details
- DisplayHDR 400 for more lifelike and outstanding visuals

# Fast IPS Gaming monitor

Full HD gaming monitor

25M2N5200U/00

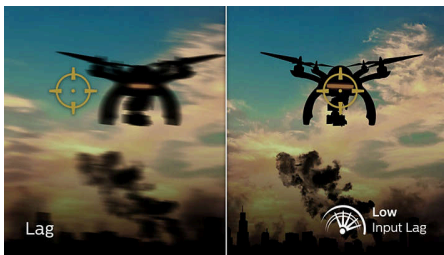
## Highlights

### Overclockable 390 Hz refresh rate



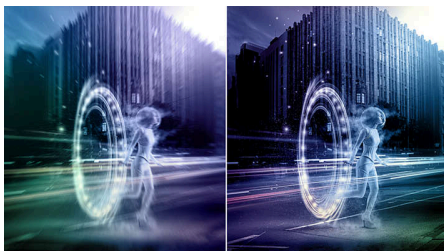
Experience the ultimate edge in intense, competitive gaming with the Philips Evnia monitor. Designed for gamers who demand ultra-smooth, lag-free visuals, this monitor delivers an overclockable 390 Hz refresh rate—significantly faster than standard displays. Say goodbye to frustrating frame drops that make enemies jump unpredictably on the screen. With this high-performance display, you'll see every critical movement in ultra-smooth motion, giving you the precision and clarity to stay ahead of the competition and take your shot with confidence.

### Low input lag



Input lag is the amount of time that elapses between performing an action with connected devices and seeing the result on screen. Low input lag reduces the time delay between entering a command from your devices to monitor, greatly improving play on twitch-sensitive video games, particularly important for playing fast-paced, competitive games.

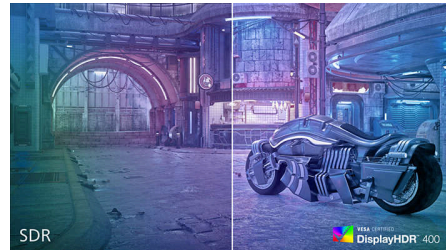
### 0.3 ms Smart MBR fast response



The Philips display with 0.3 ms Smart MBR effectively eliminates smearing and motion blur, and delivers sharper and more precise visuals to

enhance your gaming experience. Fast-moving action and dramatic transitions will be rendered smoothly. The best choice for playing thrilling and movement-sensitive games.

### DisplayHDR 400



VESA-certified DisplayHDR 400 delivers a significant step up from normal SDR displays. Unlike other 'HDR-compatible' screens, true DisplayHDR 400 produces astonishing brightness, contrast and colours. With global dimming and minimum 400 nits of brightness, images come to life with notable highlights while featuring deeper, more nuanced blacks. It renders a fuller palette of rich new colours, delivering a visual experience that engages your senses.

### SmartContrast



SmartContrast is a Philips technology that analyses the contents you are displaying, automatically adjusting colours and controlling backlight intensity to dynamically enhance contrast for the best digital images and videos or when playing games where dark hues are displayed. When Economy mode is selected, contrast is adjusted and backlighting fine-tuned for just-right display of everyday office applications and lower power consumption.

### LowBlue mode and Flicker-free



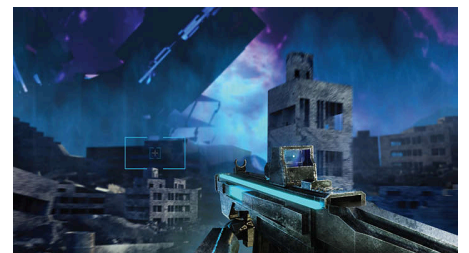
Our LowBlue Mode and Flicker-free technology have been developed to reduce eye strain and fatigue often caused by long hours in front of a monitor.

### SmartImage Game mode



The new Philips gaming display has quick-access OSD fine-tuned for gamers, offering you multiple options. "FPS" mode (First person shooting) improves dark themes in games, allowing you to see hidden objects in dark areas. "Racing" mode adapts the display with the fastest response time and high colour, along with image adjustments. "RTS" mode (Real-time strategy) has a special SmartFrame mode that enables highlighting of specific area and allows for size and image adjustments. Gamer 1 and Gamer 2 enable you to save personal customised settings based on different games, ensuring best performance.

### Smart Crosshair



Colour of Crosshair is set by default. When Smart Crosshair is on, the colour will change as a complementary colour to the background colour. Smart Crosshair enhances the aiming accuracy so you can spot the enemies more easily.



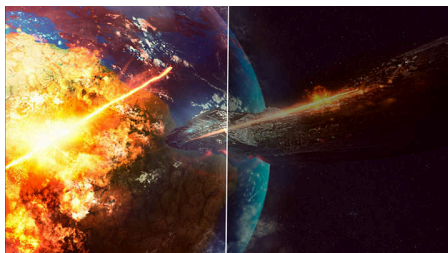
## Fast IPS Gaming monitor

Full HD gaming monitor

25M2N5200U/00

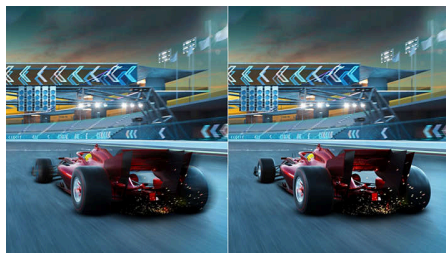
# Highlights

### Stark ShadowBoost



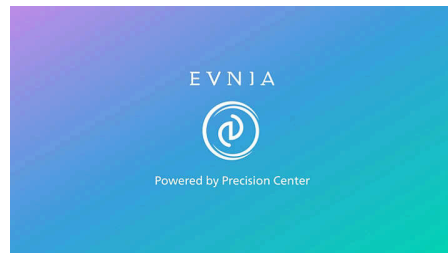
This feature enhances dark scenes without overexposing lightened areas. The Stark ShadowBoost feature has three selectable levels that offer texturised images with better colour saturation and higher contrast, so you can see better in both light and dark environments. In addition, this feature helps you fine-tune your sight so that enemies get exposed more quickly when gaming.

### Smart MBR



In an effort to reduce motion blur, this monitor's LED backlight will work simultaneously with the refresh rate to control brightness levels for the best picture clarity. Please note that Smart MBR is a type of gaming mode and it is recommended to turn the function off when not gaming as it may cause screen-flickering.

### Evnia Precision Centre



Evnia Precision Centre is an easy-to-use software designed to optimise and personalise your Evnia monitor. Whether you're a casual or competitive gamer, it offers a wide range of customisation options to match your unique gaming style. With intuitive controls and seamless navigation, Evnia Precision Centre gives you full control, providing everything you need to elevate your gaming to the next level — right at your fingertips.





# Fast IPS Gaming monitor

Full HD gaming monitor

25M2N5200U/00

## Specifications

### Picture/Display

**Panel Size:** 24.5 inch/62.2 cm  
**Aspect ratio:** 16:9  
**LCD panel type:** IPS technology  
**Backlight type:** W-LED system  
**Pixel pitch:** 0.2829 x 0.2829mm  
**Brightness:** 400 cd/m<sup>2</sup>  
**Display colours:** 16.7 M  
**Colour gamut (typical):** Adobe RGB 86%; DCI-P3:84%, sRGB: 110%, NTSC 93%\*  
**Contrast ratio (typical):** 1000:1  
**SmartContrast:** Mega Infinity DCR  
**Response time (typical):** 1 ms (Grey to Grey)\*  
**Viewing angle:** 178° (H)/178° (V), @ C/R > 10  
**Picture enhancement:** SmartImage game  
**Maximum resolution:** HDMI: 1920 x 1080 @ 240 Hz; DP: 1920 x 1080 @ 390 Hz (overclock)\*  
**Effective viewing area:** 543.168 (H) x 302.616 (V) mm  
**Scanning Frequency:** HDMI: 30 - 280 kHz (H) / 48 - 240 Hz (V); DP: 30 - 440 kHz (H) / 48 - 390 Hz (V)  
**sRGB**  
**Delta E:** < 2 (sRGB)  
**Flicker-free**  
**Pixel Density:** 90 PPI  
**LowBlue Mode**  
**Display Screen Coating:** Anti-Glare, 3H, Haze 25%  
**SmartUniformity:** 93 ~ 105%  
**Low Input Lag**  
**EasyRead**  
**Adaptive sync**  
**HDR:** HDR 400  
**Smart Crosshair**  
**Stark ShadowBoost**  
**Smart MBR:** 0.3 ms\*

### Connectivity

**Signal Input:** HDMI 2.0 x 2, DisplayPort 1.4 x 1  
**Sync Input:** Separate Sync  
**Audio (In/Out):** Headphone out  
**HDCP:** HDCP 1.4 (HDMI/DisplayPort), HDCP 2.2 (HDMI/DisplayPort)

### Convenience

**Plug and Play Compatibility:** DDC/CI, Mac OS, sRGB, Windows 11/10  
**User convenience:** Power On/Off, Menu/OK,

Input/Up, Game Settings/Down, SmartImage game/Back  
**OSD Languages:** Brazil Portuguese, Czech, Dutch, English, Finnish, French, German, Greek, Hungarian, Italian, Japanese, Korean, Polish, Portuguese, Russian, Spanish, Simplified Chinese, Swedish, Turkish, Traditional Chinese, Ukrainian  
**Other convenience:** Kensington lock, VESA mount (100 x 100 mm), LowBlue Mode

### Stand

**Height adjustment:** 130 mm  
**Pivot:** -/+ 90 degree  
**Swivel:** -/+ 30 degree  
**Tilt:** -5/20 degree

### Power

**Power supply:** Internal, 100–240 VAC, 50–60 Hz  
**Off mode:** 0.3 W (typ.)  
**On mode:** 25.83 W (typ.)  
**Standby mode:** 0.5 W (typ.)  
**Power LED indicator:** Operation - White, Standby mode - White (flashing)  
**Energy Label Class:** E

### Dimensions

**Packaging in mm (W x H x D):** 730 x 420 x 186 mm  
**Product without stand (mm):** 557 x 331 x 64 mm  
**Product with stand (max height):** 557 x 508 x 239 mm

### Weight

**Product with packaging (kg):** 8.07 kg  
**Product with stand (kg):** 5.09 kg  
**Product without stand (kg):** 3.39 kg

### Operating conditions

**Altitude:** Operation: +12,000 ft (3658 m), Non-operation: +40,000 ft (12,192 m)  
**Temperature range (operation):** 0°C to 40 °C  
**MTBF:** 50 000 (Excluded backlight) hour(s)  
**Relative humidity:** 20%-80 %  
**Temperature range (storage):** -20°C to 60 °C

### Sustainability

**Environmental and energy:** RoHS  
**Recyclable packaging material:** 100 %  
**Post-consumer recycled plastics:** 85%\*

### Compliance and standards

**Regulatory Approvals:** CB, CE Mark, TUV/ISO9241-307, TUV-BAUART, EAC, EAC ROHS, CEL, CCC, CEC, UKCA, EMF, FCC, ICES-003

### Cabinet

**Colour:** Dark Slate  
**Finish:** Textured

### What's in the box?

**Cables:** HDMI cable, DisplayPort cable, USB upstream cable, Power cable  
**Monitor with stand**  
**User Documentation**



\* "IPS" word mark / trademark and related patents on technologies belong to their respective owners.  
\* The Overclock function increases the native refresh rate, however, it does have some associated risks along with it. If the screen is displayed abnormally after rebooting, please switch off the Overclock setting located in the monitor's OSD menu.  
\* For best output performance, please always ensure that your graphic card is capable of achieving the maximum resolution and refresh rate of this Philips display.  
\* Response time value equal to SmartResponse  
\* Smart MBR adjusts the brightness for blur reduction, so you cannot adjust brightness while smart MBR is turned on. To reduce motion blur, the LED backlight will strobe synchronously with screen refresh, which may cause noticeable changes in brightness.  
\* Smart MBR is a gaming-optimised mode. Turning on Smart MBR may cause noticeable screen flickering. We recommended turning it off when you are not using the gaming function.  
\* Adobe RGB and DCI-P3 Coverage based on CIE1976, sRGB Area based on CIE1931, NTSC Area based on CIE1976.  
\* This monitor strives for sustainability: the stand's feet and headphone holder are made with 35% recycled plastic and monitor's chassis is made up of 85% post-consumer recycled plastic.  
\* The monitor may look different from feature images.  
\* The products and accessories listed on this leaflet may differ by country and region.