

Philips Business Monitor  
LCD monitor

**5000 series**

24 (23.8" / 60.47 cm diag.)  
1920 x 1080 (Full HD)

**24B2G5200**



## Incredible efficiency meets ultra power saving

This monitor is built for energy efficiency. With its LightSensor and PowerSensor, these two features combine to make a power-saving monitor that makes for a great all-around option for your office.

**Brilliant performance**

- 100Hz Fast Refresh: for ultra-smooth images
- IPS technology for full colors and wide viewing angles

**Designed for the way you work**

- Eyesafe certified blue light protection and color accuracy

**Eco-friendly materials for sustainability**

- 100% recyclable material & FSC certified packaging
- Built with 85% PCR and 5% ocean-bound plastics

**Energy efficiency - Eco-conscious power savings**

- LightSensor for the perfect brightness with minimal power
- PowerSensor saves up to 80% energy costs

**Designed for comfortable productivity**

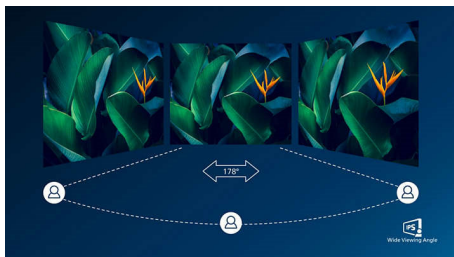
- SoftBlue Technology: for comfortable viewing
- Less eye fatigue with Flicker-free technology

**PHILIPS**

LCD monitor  
5000 series 24 (23.8" / 60.47 cm diag.), 1920 x 1080 (Full HD)

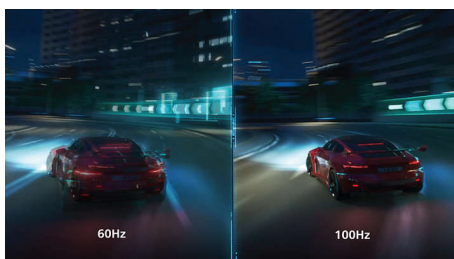
# Highlights

## IPS technology



IPS displays use an advanced technology which gives you extra wide viewing angles of 178/178 degree, making it possible to view the display from almost any angle - even in 90 degree Pivot mode! Unlike standard TN panels, IPS displays gives you remarkably crisp images with vivid colors, making it ideal not only for Photos, movies and web browsing, but also for professional applications which demand color accuracy and consistent brightness at all times.

## 100Hz Fast refresh



This Philips display redraws the screen image up to 100 times per second which makes this monitor much faster than a standard display. With a 100Hz frame rate, gamers are able to find those critical images on the screen that show enemy movement in an ultra-smooth motion so that they are easily targetable.

## Eco-Friendly Packaging



This monitor comes in packaging that is not only made of 100 percent recyclable material

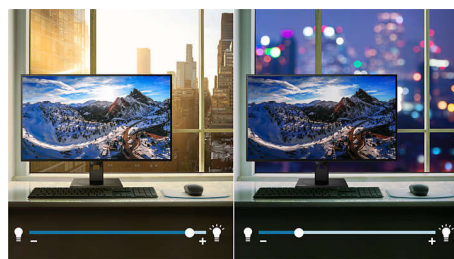
but is also FSC-certified. This type of certification ensures that your monitor's packaging is made with the environment and sustainability in mind.

## EcoSmart materials



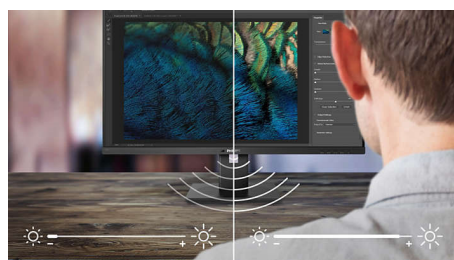
Being Eco-friendly means repurposing old materials. That's why this Philips monitor is made with 85% post-consumer recycled plastics and 5% ocean-bound plastic, therefore making a concerted effort to reduce waste.

## LightSensor



LightSensor uses a smart sensor to adjust the picture brightness depending on the room light conditions for the perfect picture with minimal power usage.

## PowerSensor



PowerSensor is a built-in 'people sensor' that transmits and receives harmless infrared signals to determine if user is present and automatically reduces monitor brightness when user steps away from the desk, cutting

24B2G5200/00

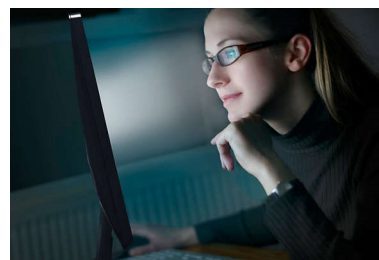
energy costs by up to 80 percent and prolonging monitor life

## TUV Rheinland Eyesafe - RPF® 40



Philips display meets TUV Rheinland Eyesafe® standard to truly protect you from the long exposure to blue light. The always-on blue light filter not only helps reduce digital eye strain, but also guarantees color integrity.

## SoftBlue Technology



SoftBlue LED technology, combined with the monitor's low blue light panel, is an effective solution to reducing the adverse health effects caused by high exposure to blue light. In this monitor's panel, the ratio of light is reduced by nearly 50 percent while the SoftBlue LED technology works simultaneously by reducing harmful blue light rays emitted from the screen. Not to mention, the SoftBlue LED technology is tested and certified by TUV Rheinland Eyesafe for its effectiveness in reducing blue light emissions.



# Specifications

## Picture/Display

- Panel Size: 23.8 inch/60.47 cm
- Aspect ratio: 16:9
- LCD panel type: IPS technology
- Backlight type: W-LED system
- Pixel pitch: 0.2745(H)mm x 0.2745(V)mm
- Brightness: 300 cd/m<sup>2</sup>
- Display colors: 16.7 M (8 bit)
- Color gamut (typical): sRGB 110%, NTSC 96%\*
- Contrast ratio (typical): 1500:1
- SmartContrast: 50,000,000:1
- Response time (typical): 4 ms (Gray to Gray)\*
- Viewing angle: 178° (H) / 178° (V), @ C/R > 10
- Picture enhancement: SmartImage
- Maximum resolution: VGA: 1920 x 1080 @ 75 Hz; HDMI/DP: 1920 x 1080 @ 100 Hz
- Effective viewing area: 527.04(H) x 296.46(V) mm
- Scanning Frequency: VGA: 30k - 85 kHz (H) / 48 - 75 Hz (V); HDMI/DP: 30k - 115 kHz (H) / 48 - 100 Hz (V)
- sRGB
- SoftBlue
- Flicker-free
- Pixel Density: 93 PPI
- Display Screen Coating: Anti-Glare, 3H, Haze 25%
- EasyRead
- Adaptive sync
- EyeSafe

## Connectivity

- Signal Input: VGA x1, HDMI 1.4 x 1, DisplayPort 1.2 x 1
- Sync Input: Separate Sync, Sync on Green
- Audio (In/Out): Audio In x 1, Audio Out x 1
- HDCP: HDCP 1.4 (HDMI / DisplayPort)
- USB Hub: USB 3.2, Gen 1 / 5 Gbps, USB-B upstream x 1 (Data), USB 3.2 downstream x 4 (with 1 for fast charge B.C 1.2)

## Convenience

- Built-in Speakers: 3 W x 2
- Plug & Play Compatibility: DDC/CI, Mac OS, sRGB, Windows 11 / 10
- User convenience: SmartImage, Input, Brightness, Menu, Power On/Off
- OSD Languages: Brazil Portuguese, Czech, Dutch, English, French, Finnish, German, Greek, Hungarian, Italian, Japanese, Korean, Portuguese, Polish, Russian, Simplified Chinese, Spanish, Swedish, Traditional Chinese, Turkish, Ukrainian
- Other convenience: Kensington lock, VESA mount (100x100mm), Earphone hook
- Control software: SmartControl

## Stand

- Height adjustment: 150 mm
- Pivot: +/-90 degree

- Swivel: +/-180 degree
- Tilt: -5/30 degree degree

## Power

- ECO mode: 6.0 W (typ.)
- Power supply: Built-in, 100-240VAC, 50-60Hz
- Off mode: 0.3 W (typ.)
- On mode: 6.93 W (typ.) (EnergyStar test method)
- Standby mode: 0.3 W (typ.)
- Power LED indicator: Operation - White, Standby mode- White (blinking)
- Energy Label Class: B

## Dimensions

- Packaging in mm (WxHxD): 615 x 385 x 139 mm
- Product without stand (mm): 540 x 324x 56 mm
- Product with stand(max height): 540 501 x 232 mm

## Weight

- Product with packaging (kg): 7.42 kg
- Product with stand (kg): 5.28 kg
- Product without stand (kg): 3.56 kg

## Operating conditions

- Altitude: Operation: +12,000ft (3,658m), Non-operation: +40,000ft (12,192m)
- Temperature range (operation): 0°C to 40 °C
- Relative humidity: 20%-80 %
- Temperature range (storage): -20°C to 60 °C
- MTBF (demonstrated): 70,000 hrs (excluded backlight)

## Sustainability

- Environmental and energy: PowerSensor, LightSensor, Energy Star, EPEAT Gold, RoHS
- Post consumer recycled plastic: 85%+OBP 5%
- Recyclable packaging material: 100 %
- Specific Substances: PVC / BFR free housing, Mercury free

## Compliance and standards

- Regulatory Approvals: CB, CE Mark, TUV/GS, TUV Ergo, TCO Certified, EAC, EAEU RoHS, UKCA, EMF, FCC, ICES-003, TUV Eyesafe certified

## Cabinet

- Finish: Texture
- Foot: Charcoal
- Front bezel: Charcoal
- Rear cover: Charcoal

## What's in the box?

- Cables: HDMI cable, DisplayPort cable, Power cable
- Monitor with stand
- User Documentation



Issue date 2024-11-21

Version: 5.5.0

EAN: 87 21038 00172 3

© 2024 Koninklijke Philips N.V.  
All Rights reserved.

Specifications are subject to change without notice.  
Trademarks are the property of Koninklijke Philips N.V. or their respective owners.

[www.philips.com](http://www.philips.com)

\* Response time value equal to SmartResponse

\* sRGB Area based on CIE1931, NTSC Area based on CIE1976.

\* When calculating energy costs saving from PowerSensor, both USB and Power delivery are excluded.

\* EPEAT rating is valid only where Philips registers the product. Please visit <https://www.epeat.net/> for registration status in your country.

\* The monitor may look different from feature images.

\* The products and accessories listed on this leaflet may differ by country and region.