

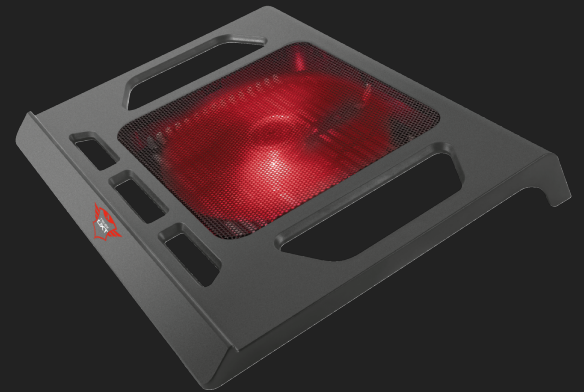
#20159

## Notebook Cooling Stand

Gaming notebook cooling stand with silent, extra-large and red illuminated fan

### Key features

- Keeps your notebook cool to increase performance
- Extra-large red illuminated fan
- Silent, USB powered cooling fan
- For notebooks up to 17.3"
- Meshed metal top plate for optimized air flow



### What's in the box

- Notebook cooling stand
- User's guide

### System requirements

- USB port (for powering the fan)

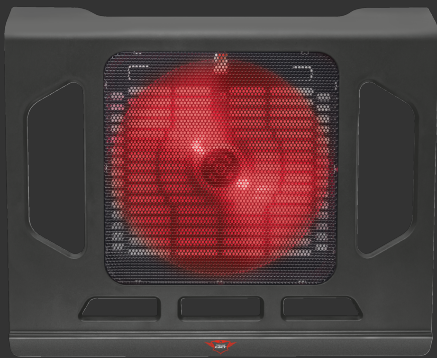
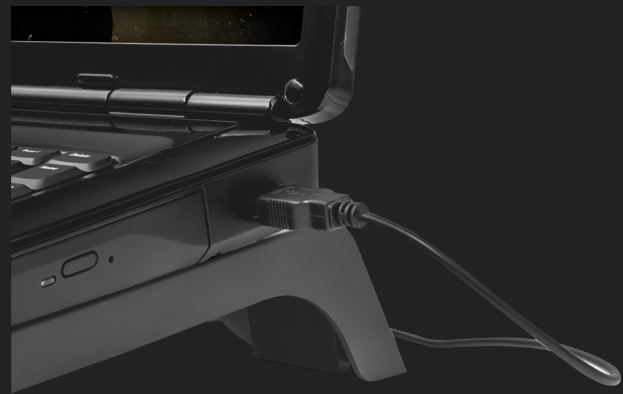


## Refreshment

Laptops start to get a higher temperature while you are gaming or working for a longer period of time. Performance can decrease when the laptop gets to warm. The GXT 220 provides a built – in fan, which keeps your laptop cool and increase its efficiency and battery life. The silent cooling fan ensures an ideal airflow for optimal heat dissipation.

## Easy connection

The GXT 220 is connected to your laptop via an USB port on the back of the cooling stand. There is no installation required: simply plug the USB into your laptop and it starts working! You can game on your laptop wherever you want, because no power socket is needed. The cooling stand is compatible with all laptops up to 17.3”.



## Illuminated

The GXT 220 provides a red illuminated fan, which ensures a real gaming look! The GXT 220 is not only for extended gaming sessions, it can also be used for work in libraries and offices.

**GENERAL**

<b>Max. laptop size</b>	17.3 "	<b>Max. weight</b>	5 kg
<b>Fan included</b>	Yes	<b>Height of main product (in mm)</b>	49 mm
<b>Width of main product (in mm)</b>	350 mm	<b>Depth of main product (in mm)</b>	293 mm
<b>Total weight</b>	484 g		

**INPUT**

<b>Power source</b>	USB
---------------------	-----

**CONNECTIVITY**

<b>Cables included</b>	Fixed USB cable 50cm
------------------------	----------------------

**CHARACTERISTICS**

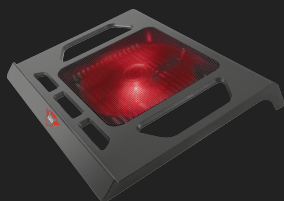
<b>Bearing type</b>	Sleeve
---------------------	--------

**HEADPHONE**

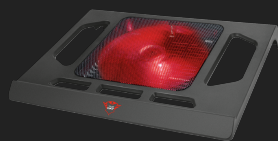
<b>Foldable</b>	False
-----------------	-------

**FEATURES**

<b>Anti-skid</b>	True	<b>Special features</b>	RED LED fan color
------------------	------	-------------------------	-------------------



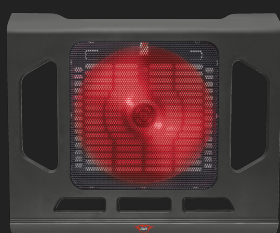
**PRODUCT VISUAL 1**



**PRODUCT VISUAL 2**



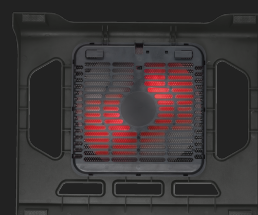
**PRODUCT VISUAL 3**



**PRODUCT TOP 1**



**PRODUCT SIDE 1**



**PRODUCT BOTTOM 1**



**PACKAGE FRONT 1**



**LIFESTYLE VISUAL 1**