



# GSX 1000

## Headset Amplifier

User Guide  
Bedienungsanleitung  
Notice d'emploi  
Istruzioni per l'uso  
Instrucciones de uso  
Manual de instruções  
Bedieningsinstructies

Οδηγίες λειτουργίας  
Betjeningsvejledning  
Bruksanvisning  
Käyttöohje  
Instrukcja obsługi  
Инструкция по  
эксплуатации

使用说明书  
使用説明書  
Kullanım kılavuzu  
取扱説明書  
Buku petunjuk  
사용 설명서

# Chapter overview

## 1 Scope of delivery

Lieferumfang | Contenu | Dotazione | Volumen de suministro | Material fornecido | Omvang van de levering | Συσκευασία παράδοσης | Leveringsomfang | Medföljande delar | Toimitussisältö | Zakres dostawy | Комплект поставки | 供货范围 | 供货範圍 | Teslimat kapsamı | 同梱品 | Isi kemasan | 구성품

## 2 Product overview

Produktübersicht | Vue d'ensemble de l'appareil | Panoramica del prodotto | Vista general del producto | Vista geral do produto | Productoverzicht | Συνοπτική παρουσίαση προϊόντος | Produktöversigt | Tuotteen yleiskatsaus | Przegląd produktów | Общий вид изделия | 产品总览 | 產品各部件簡介 | Ürüne Genel Bakış | 製品概要 | Ikhtisar Produk | 제품 개요

## 3 Connecting the product

Produkt anschließen | Raccordement de l'appareil | Collegamento del prodotto | Conectar el producto | Ligar o produto | Product aansluiten | Σύνδεση προϊόντος | Tilslutning af produktet | Anslut produktén | Liitä tuote | Podłączanie produktu | Подключение изделия | 连接产品 | 連接產品 | Ürünün bağlanması | 製品の接続 | Menyambungkan produk | 제품 연결

## 4 Installing the product

Produkt installieren | Installation de l'appareil | Installazione del prodotto | Instalar el producto | Instalar o produto | Product installeren | Εγκατάσταση προϊόντος | Installation af produktet | Installera produktén | Asenna tuote | Instalowanie produktu | Установка изделия | 安装产品 | 安裝產品 | Ürünün kurulumu | 製品のインストール | Menginstal produk | 제품 설치

## 5 Changing settings

Einstellungen ändern | Modification des paramètres | Modifica delle impostazioni | Modificar los ajustes | Alterar definições | Instellingen wijzigen | Αλλαγή ρυθμίσεων | Ændring af indstillinger | Ändra inställningarna | Muuta asetuksia | Zmiana ustawień | Изменение настроек | 更改设置 | 變更設定 | Ayarların değiştirilmesi | 設定の変更 | Mengubah pengaturan | 설정 변경

## 6 Saving & loading settings

Einstellungen speichern & laden | Sauvegarde et chargement des paramètres | Memorizzazione e caricamento delle impostazioni | Guardar e cargar ajustes | Guardar e carregar definições | Instellingen opslaan & laden | Αποθήκευση και φόρτωση ρυθμίσεων | Lagring og indlæsning af indstillinger | Spara & hämta inställningar | Tallenna ja lataa asetukset | Zapisywanie i ładowanie ustawień | Сохранение и загрузка настроек | 保存并加载设置 | 儲存並載入設定 | Ayarların kaydedilmesi ve yüklenmesi | 設定の保存と呼び出し | Menyimpan & memuat pengaturan | 설정 저장 & 불러오기

## 7 Using the Tournament Mode

Turnier-Modus verwenden | Utilisation du mode tournois | Utilizzo della modalità Torneo | Usar en modo torneo | Utilizar o Modo de Torneio | De toernooimodus gebruiken | Χρήση της λειτουργίας Τουρνουά | Brug af turneringsmodus | Använda turneringsläget | Turnaustilan käyttö | Używanie trybu turniejowego | Использование режима турнира | 使用巡回赛模式 | 使用競賽模式 | Turnuva Modunu kullanma | トーナメントモードの使用 | Menggunakan Mode Turnamen | 토너먼트 모드 사용

## 8 Cleaning the product / Restoring factory settings

Produkt reinigen / Auf Werkseinstellungen zurücksetzen | Nettoyage de l'appareil / Réinitialisation des paramètres d'usine | Pulizia del prodotto / Ripristino delle impostazioni di fabbrica | Limpiar el producto / Restablecer los ajustes de fábrica | Limpar o produto / Repor as definições de fábrica | Product reinigen / Resetten op fabrieksinstellingen | Καθαρισμός προϊόντος / Επαναφορά εργοστασιακών ρυθμίσεων | Rengøring af produktet / Tilbagestilling til fabriksindstillinger | Rengör produkten / Återställ till fabriksinställningarna | Puhdista tuote / Palauta tehdasasetukset | Czyszczenie produktu / Przywracanie ustawień domyślnych | Очистка изделия / Сброс на заводские настройки | 清洁产品 / 恢复出厂设置 | 清潔產品 / 恢復出廠預設值 | Ürünün temizlenmesi / Varsayılan fabrika ayarlarının geri yüklenmesi | 製品のお手入れ / 工場出荷時の初期設定にリセットする | Membersihkan produk / Mengatur ulang pengaturan default pabrik | 제품 청소 / 공장 설정값으로 리셋하기

Congratulations on your purchase of the Sennheiser GSX 1000. Sennheiser has been a pioneer in the audio industry since 1945, and we continue to innovate and discover new frontiers in sound. The GSX 1000 is the latest milestone in this journey, pushing the limits of immersive audio in gaming, while also giving you control to get the exact sound experience you demand.

The Sennheiser Virtual Surround algorithm is the result of 8 years of research into advanced HRTF algorithms and countless man hours to create something that we consider the best virtual surround sound on the market today.

It doesn't matter if your goal is to become more immersed in online worlds, or get a crucial advantage in a first person shooter, the GSX 1000 will deliver the ultimate sound experience for gaming.

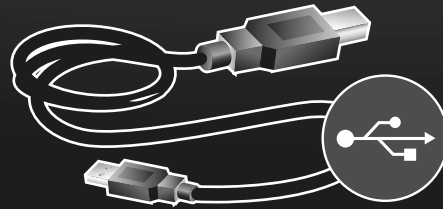
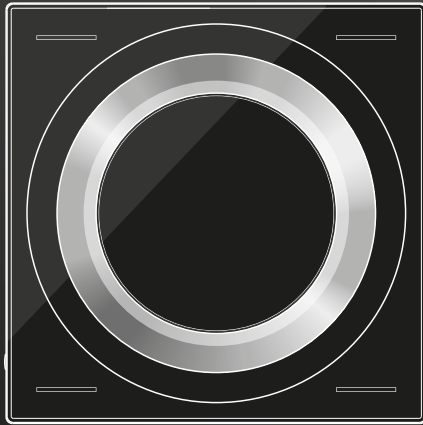
And while the GSX 1000 is very simple to setup and there are no driver installations needed, we still recommend you take a bit of time to read through this manual to understand the full power of the product you have just acquired.

**Sennheiser Gaming**  
The Sound Games  
Are Made Of!

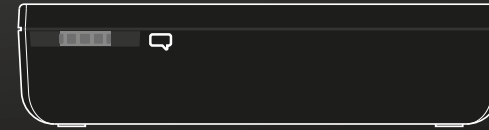


Chapter overview | Kapitelübersicht | Sommaire |  
Panoramica dei capitoli | Vista general de capítulos | Visão geral dos capítulos |  
Overzicht hoofdstukken | Επισκόπηση κεφαλαίων | Kapitelöversigt |  
Innehållsförteckning | Kappaleen yleiskuvaus | Przegląd rozdziałów |  
Оглавление | 章节概览 | 章節概覽 | Bölümlere genel bakış |  
目次 | Ikhtisar Bab | 장 개요

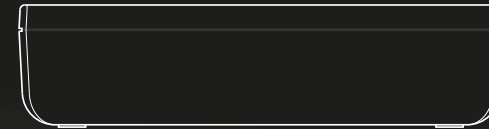
# 1 Scope of delivery



back side



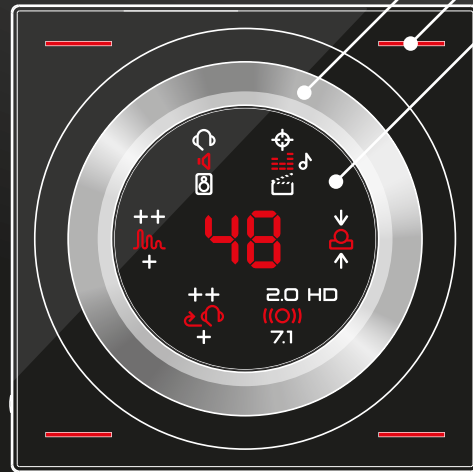
right side



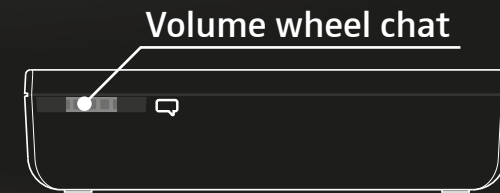
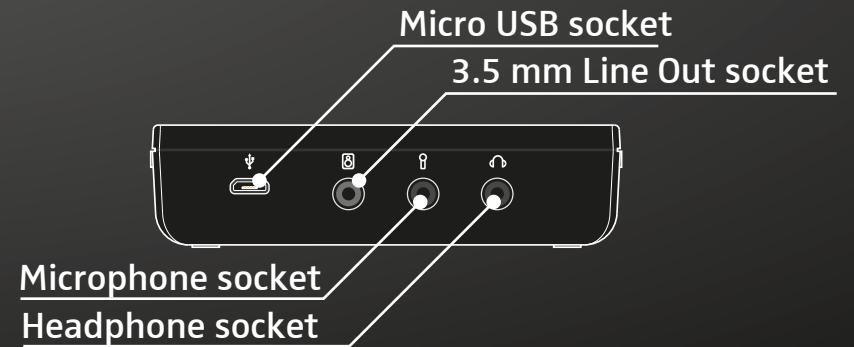
left side

Scope of delivery | Lieferumfang | Contenu |  
Dotazione | Volumen de suministro | Material fornecido |  
Omvang van de levering | Συσκευασία παράδοσης | Leveringsomfang |  
Medföljande delar | Toimitussisältö | Zakres dostawy |  
Комплект поставки | 供货范围 | 供貨範圍 | Teslimat kapsamı |  
同梱品 | Isi kemasan | 구성품

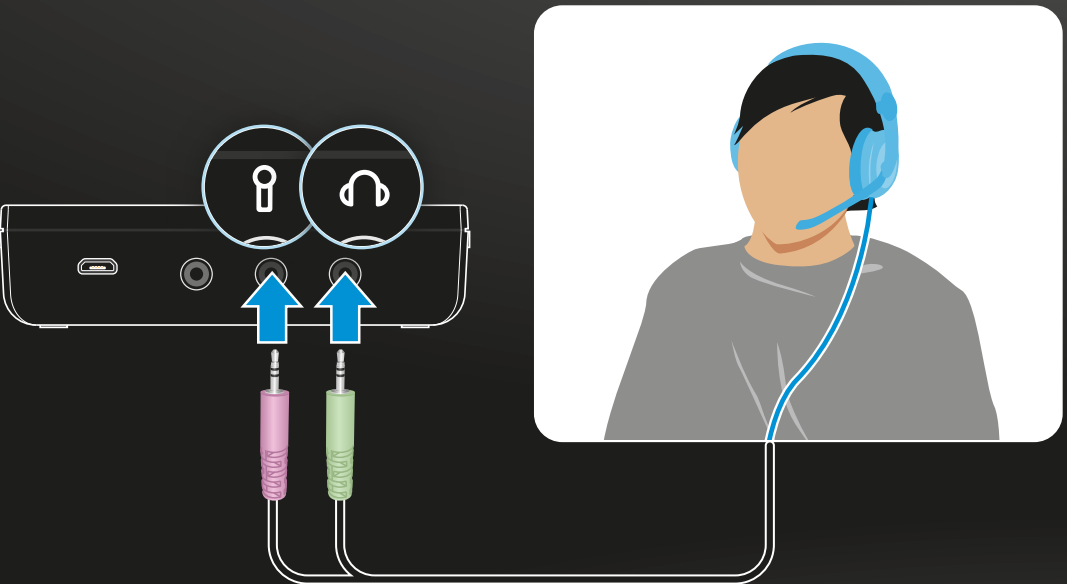
Volume wheel  
 Save settings & load presets  
 Display & Touch control panel



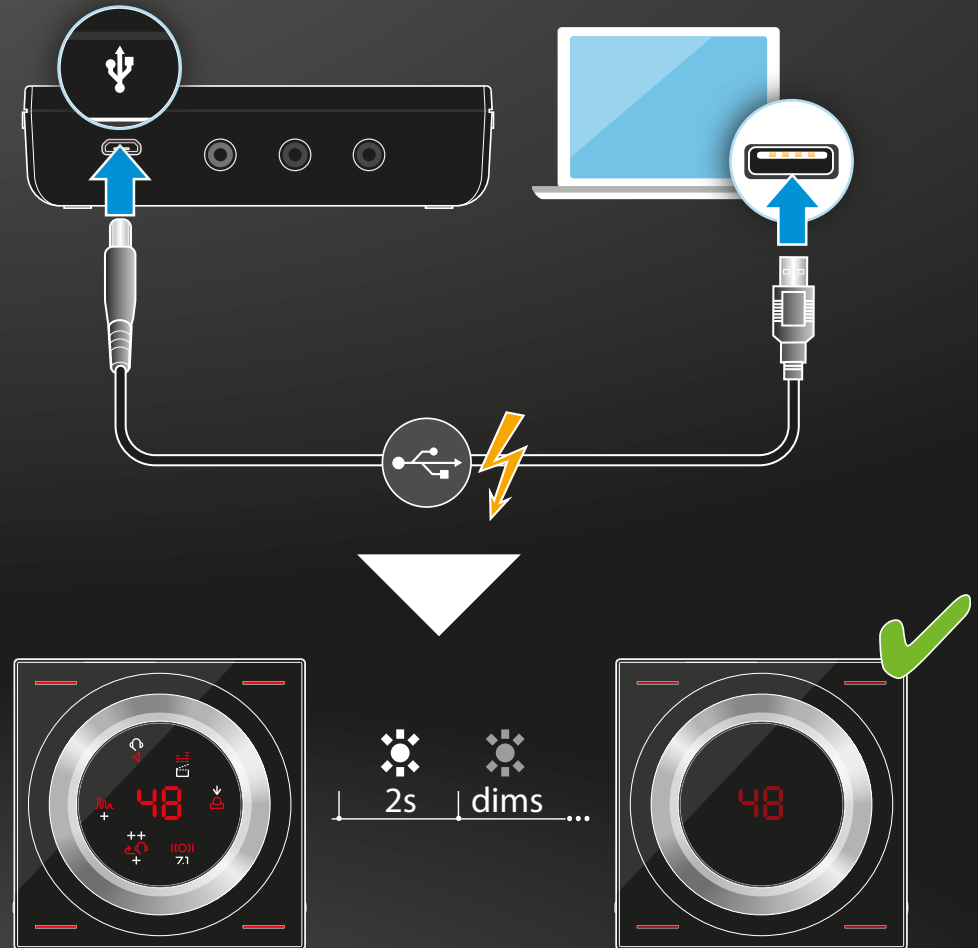
- 48** Volume 0–99
- Switch between sound systems: Headset or Speaker
- Equalizer settings: Off, Music, Story or Esports
- Surround Amplification: Front, Back or Neutral
- Sound Mode: Stereo or 7.1 Surround Sound
- Sidetone Level: ++ High, + Low or Neutral
- Reverb (Environment): ++ Open World, + Confined Space or Neutral



Connect a headset

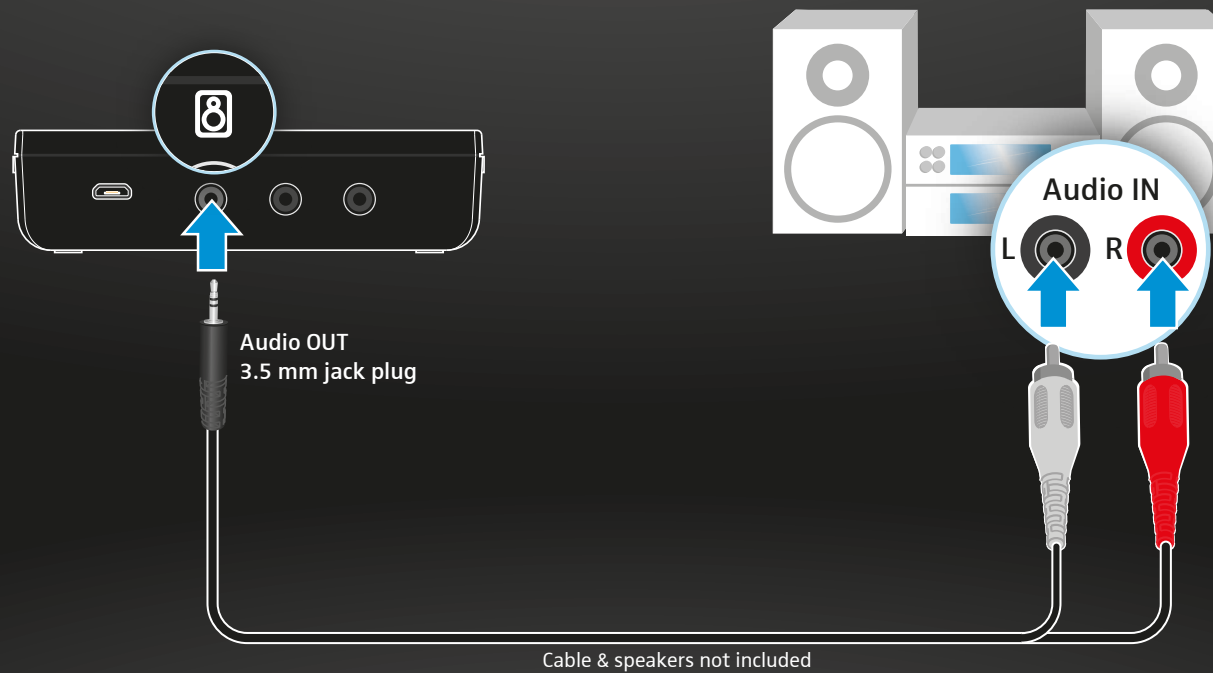


Connect to a computer



Connecting to a headset & a computer | Headset & Computer anschließen | Connexion du casque micro et de l'ordinateur | Collegamento dell'headset e del computer | Conectar headset & ordenador | Ligar os microauscultadores e o computador | Headset & computer aansluiten | Σύνδεση σετ κεφαλής και υπολογιστή | Tilslutning af headset og computer | Anslut headset & dator | Liitä kuulokemikrofoni ja tietokone | Podłączenie zestawu słuchawkowego i komputera | Подключение гарнитуры и компьютера | 将耳机跟电脑连接起来 | 連接頭戴式耳機與電腦 | Kulaklığın ve bilgisayarın bağlanması | ヘッドセットとP Cの接続 | Menyambungkan headset & komputer | 헤드셋 & 컴퓨터 연결

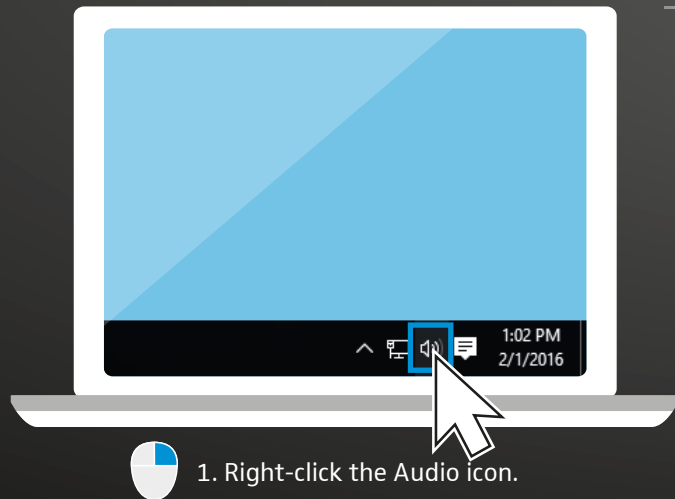
## Connect loudspeakers



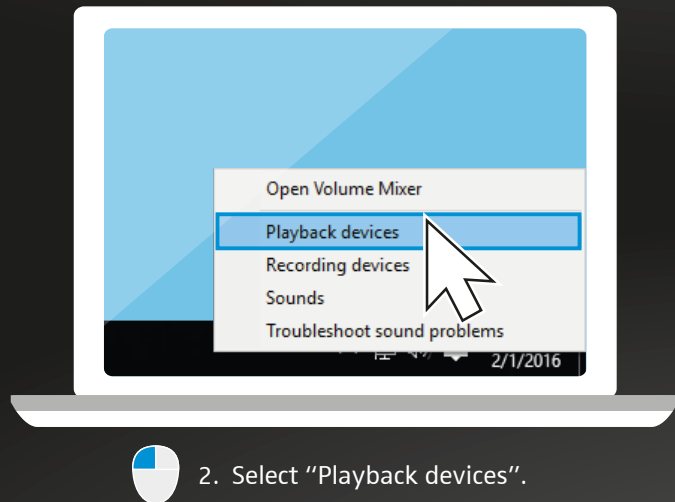
Connecting to loudspeakers | Lautsprecher anschließen | Connexion des haut-parleurs | Collegamento degli altoparlanti | Conectar altavoces | Ligar as colunas | Luidsprekers aansluiten | Σύνδεση ηχείου | Tilslutning af højttaleren | Anslut högtalare | Liitä kaiuttimet | Podłączenie głośników | Подключение динамиков | 连接扬声器 | 連接揚聲器 | Hoparlörün bağlanması | スピーカーの接続 | Menyambungkan loudspeaker | 스피커 연결

## 4 Installing the product

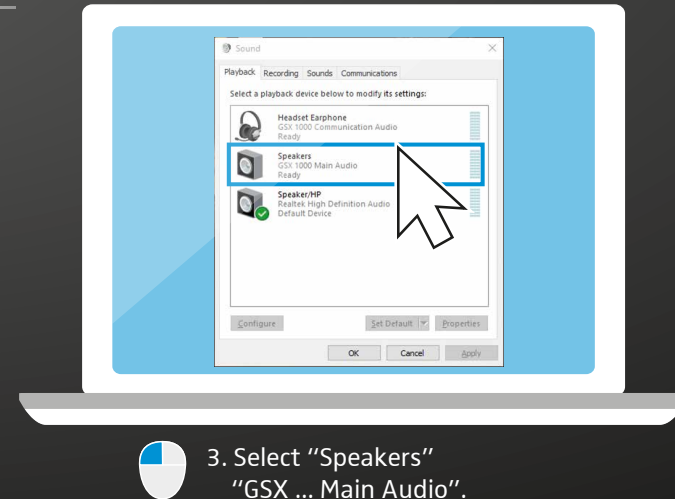
### Change audio settings: PC



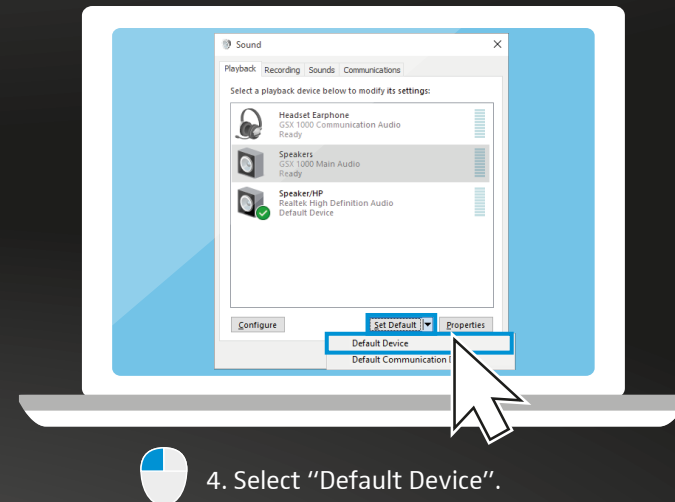
1. Right-click the Audio icon.



2. Select "Playback devices".



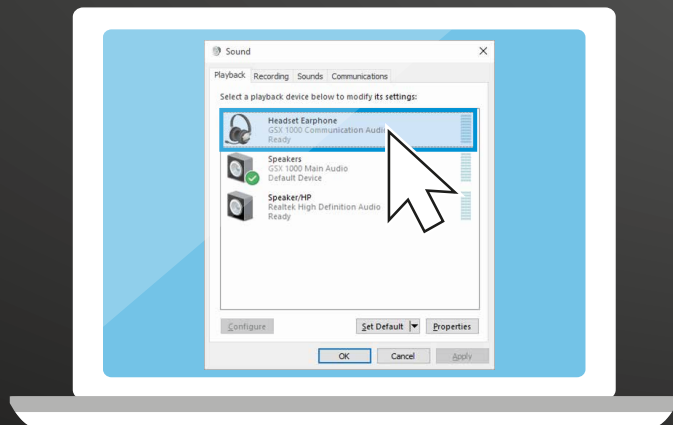
3. Select "Speakers"  
"GSX ... Main Audio".



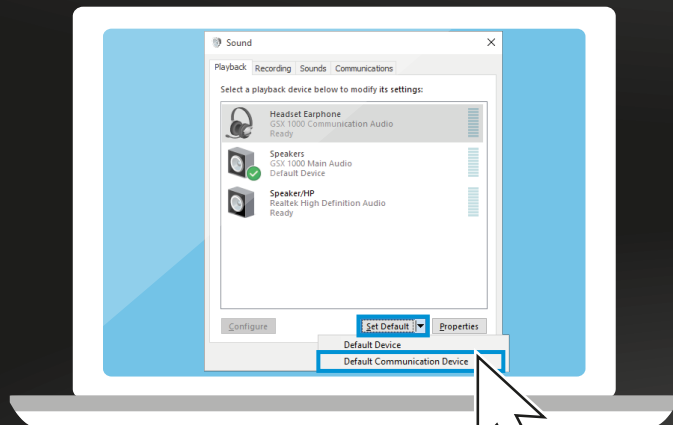
4. Select "Default Device".

Changing the sound settings on a PC | Audioeinstellungen am PC anpassen | Réglage des paramètres audio du PC |  
Adattamento delle impostazioni audio sul PC | Ajustar los ajustes de audio en el PC | Ajustar as definições de áudio no PC |  
Audio-instellingen op de pc aanpassen | Προσαρμογή των ρυθμίσεων ήχου σε PC | Tilpasning af audioindstillinger på en pc |  
Justera ljudinställningarna på datorn | Säädä tietokoneen audioasetukset | Dostosowywanie ustawień audio na komputerze PC |  
Адаптація настроек звука на ПК | 调整电脑的音频设置 | 調整電腦的音訊設定 | Bilgisayarda ses ayarlarının uyarlanması |  
オーディオ設定のPCでの変更 | Menyesuaikan pengaturan audio pada PC | PC에서 오디오-설정 조정

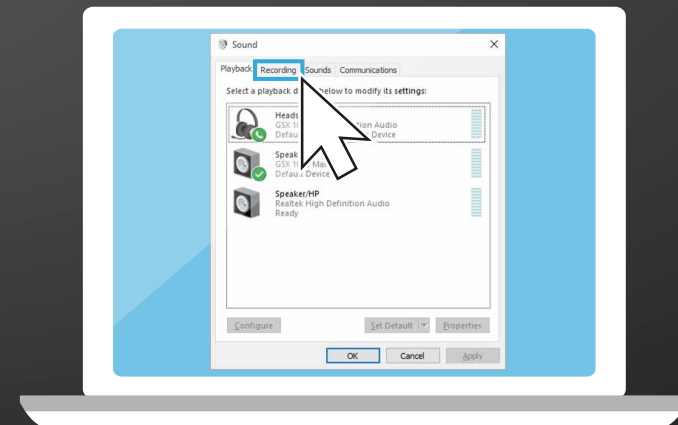
## 4 Installing the product



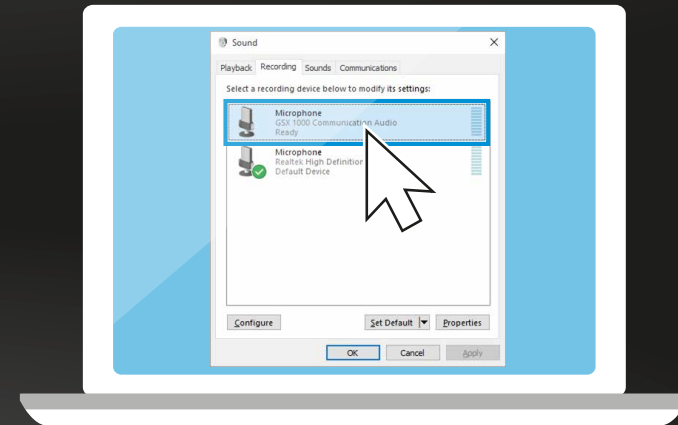
5. Select "Headset Earphone"  
"GSX ... Communication Audio".



6. Select  
"Default Communication Device".



7. Select tab "Recording".

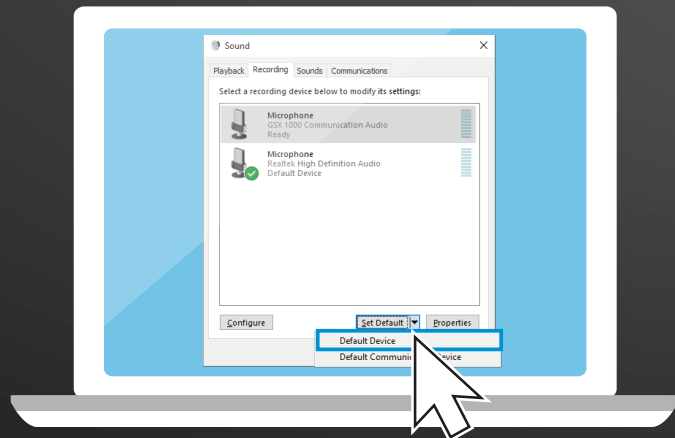


8. Select "GSX ... Communication Audio".

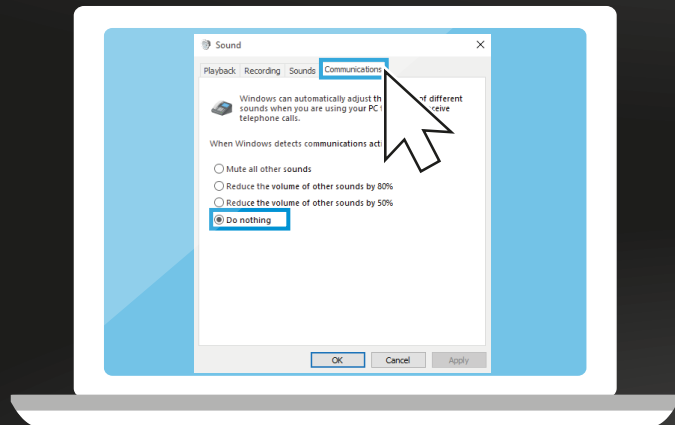
Changing the sound settings on a PC | Audioeinstellungen am PC anpassen | Réglage des paramètres audio du PC |  
Adattamento delle impostazioni audio sul PC | Ajustar los ajustes de audio en el PC | Ajustar as definições de áudio no PC |  
Audio-instellingen op de pc aanpassen | Προσαρμογή των ρυθμίσεων ήχου σε PC | Tilpasning af audioindstillinger på en pc |  
Justera ljudinställningarna på datorn | Säädä tietokoneen audioasetukset | Dostosowywanie ustawień audio na komputerze PC |  
Адаптация настроек звука на ПК | 調整电脑的音频设置 | 調整電腦的音訊設定 | Bilgisayarda ses ayarlarının uyarlanması |  
オーディオ設定のPCでの変更 | Menyesuaikan pengaturan audio pada PC | PC에서 오디오-설정 조정



## 4 Installing the product

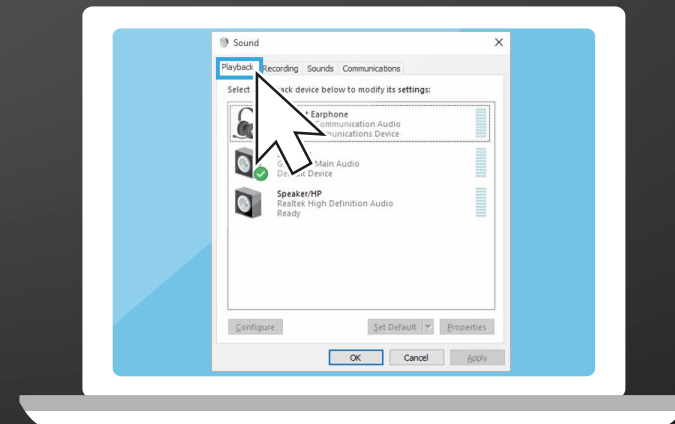


9. Select "Default Device".

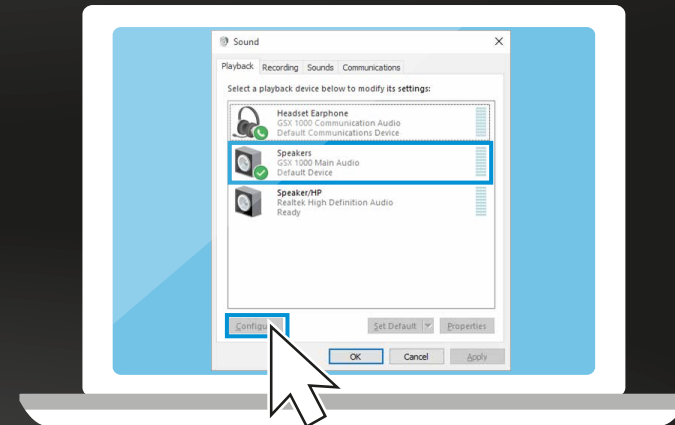


10. Select tab "Communications".  
11. Select "Do nothing".

## 7.1 surround sound



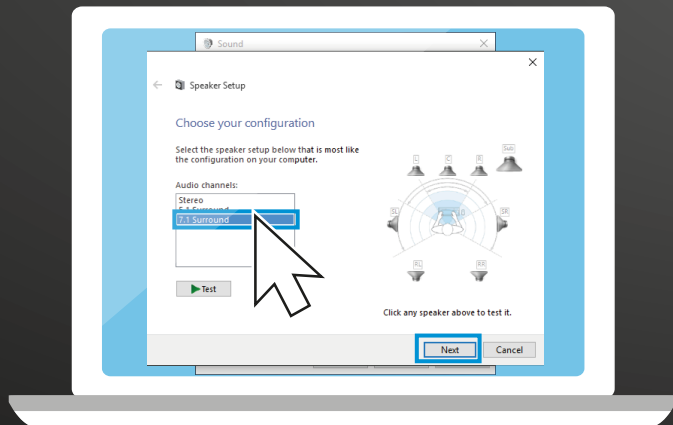
12. Select tab "Playback".



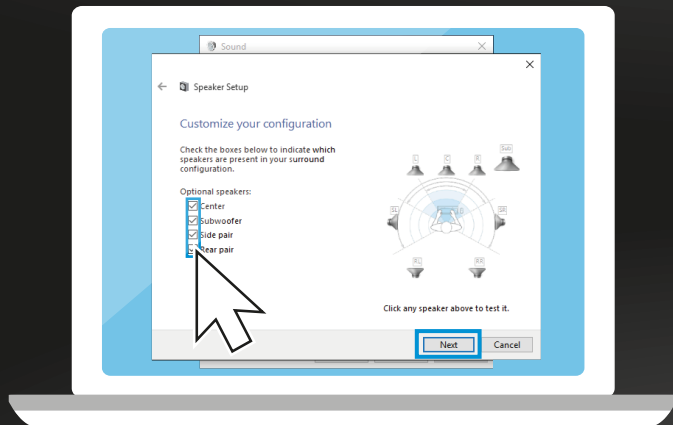
13. Select Speakers "GSX ... Main Audio".  
14. Click "Configure".

Changing the sound settings on a PC | Audioeinstellungen am PC anpassen | Réglage des paramètres audio du PC |  
Adattamento delle impostazioni audio sul PC | Ajustar los ajustes de audio en el PC | Ajustar as definições de áudio no PC |  
Audio-instellingen op de pc aanpassen | Προσαρμογή των ρυθμίσεων ήχου σε PC | Tilpasning af audioindstillinger på en pc |  
Justera ljudinställningarna på datorn | Säädä tietokoneen audioasetukset | Dostosowywanie ustawień audio na komputerze PC |  
Адаптація настроек звука на ПК | 調整电脑的音频设置 | 調整電腦的音訊設定 | Bilgisayarda ses ayarlarının uyarlanması |  
オーディオ設定のPCでの変更 | Menyesuaikan pengaturan audio pada PC | PC에서 오디오-설정 조정

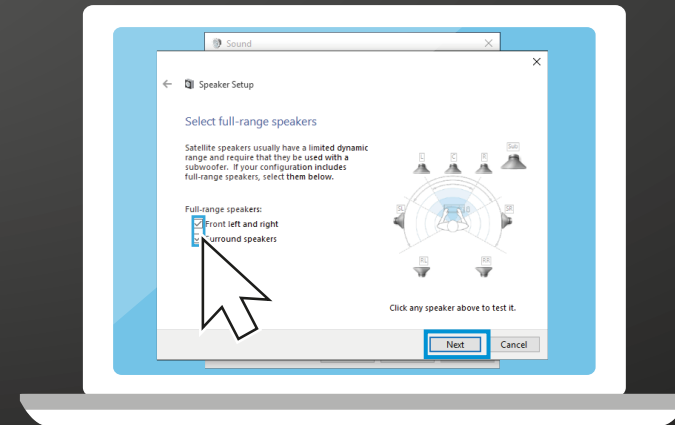
## 4 Installing the product



15. Select "7.1 Surround" and click "Next".



16. Make sure all options are activated and click "Next".



17. Activate all options and click "Next" to close "Speaker Setup".  
18. Click "OK" to save settings and close the window.



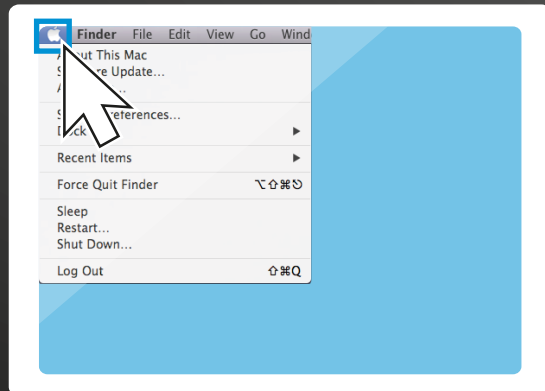
For specific information and  
Firmware update please visit  
[www.sennheiser.com/gaming-downloads](http://www.sennheiser.com/gaming-downloads)



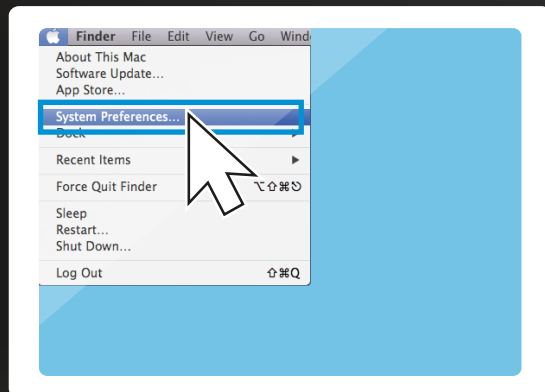
Changing the sound settings on a PC | Audioeinstellungen am PC anpassen | Réglage des paramètres audio du PC |  
Adattamento delle impostazioni audio sul PC | Ajustar los ajustes de audio en el PC | Ajustar as definições de áudio no PC |  
Audio-instellingen op de pc aanpassen | Προσαρμογή των ρυθμίσεων ήχου σε PC | Tilpasning af audioindstillinger på en pc |  
Justera ljudinställningarna på datorn | Säädä tietokoneen audioasetukset | Dostosowywanie ustawień audio na komputerze PC |  
Адаптация настроек звука на ПК | 調整电脑的音频设置 | 調整電腦的音訊設定 | Bilgisayarda ses ayarlarının uyarlanması |  
オーディオ設定のPCでの変更 | Menyesuaikan pengaturan audio pada PC | PC에서 오디오-설정 조정

## 4 Installing the product

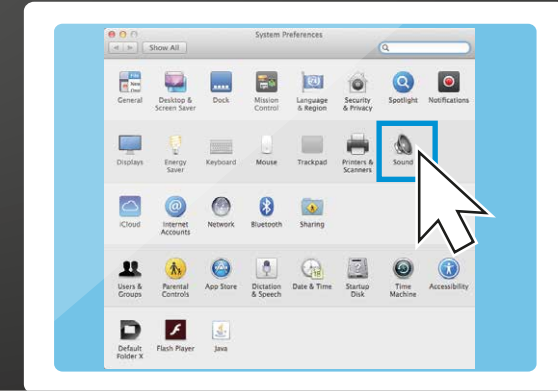
### Change audio settings: Mac



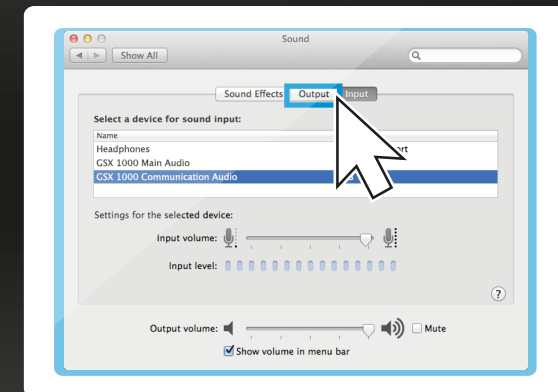
1. Click the Apple icon.



2. Select "System Preferences...".



3. Select "Sound".

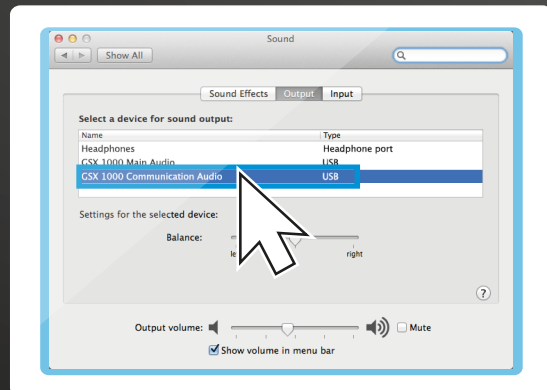


4. Select tab "Output".

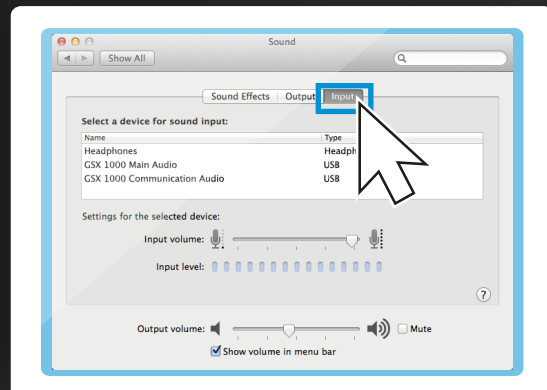
Changing the sound settings on a Mac | Audioeinstellungen am Mac anpassen | Réglage des paramètres audio du Mac | Adattamento delle impostazioni audio sul Mac | Ajustar los ajustes de audio en Mac | Ajustar as definições de áudio num Mac | Audio-instellingen op de Mac aanpassen | Προσαρμογή των ρυθμίσεων ήχου σε Mac | Tilpasning af audioindstillinger på en mac | Justera ljudinställningarna på Mac-dator | Säädä Mac-tietokoneen audioasetukset | Dostosowywanie ustawień audio na komputerze Mac | Адаптація настроек звука на Mac | 调整Mac的音频设置 | 調整 Mac 的音訊設定 | Mac'te ses ayarlarının uyarlanması | オーディオ設定のMacでの変更 | Menyesuaikan pengaturan audio pada Mac | Mac에서 오디오-설정 조정

## 4 Installing the product

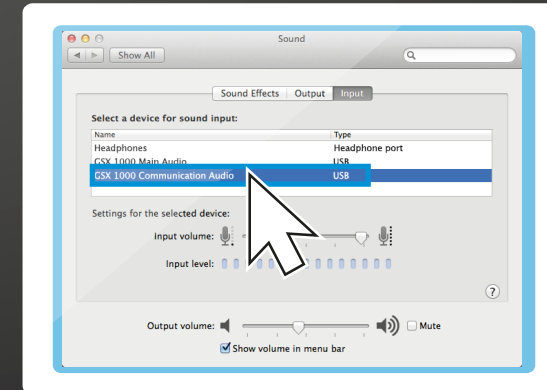
### Change audio settings: Mac



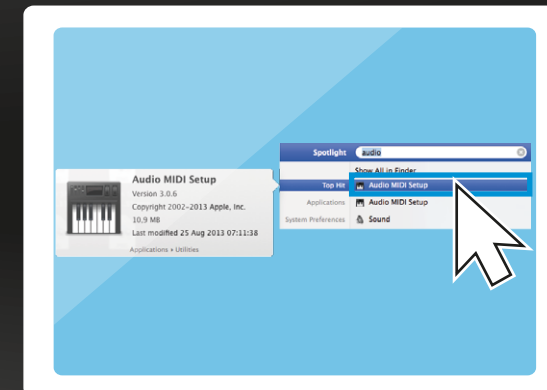
5. Select "GSX ... Communication Audio".



6. Select tab "Input".



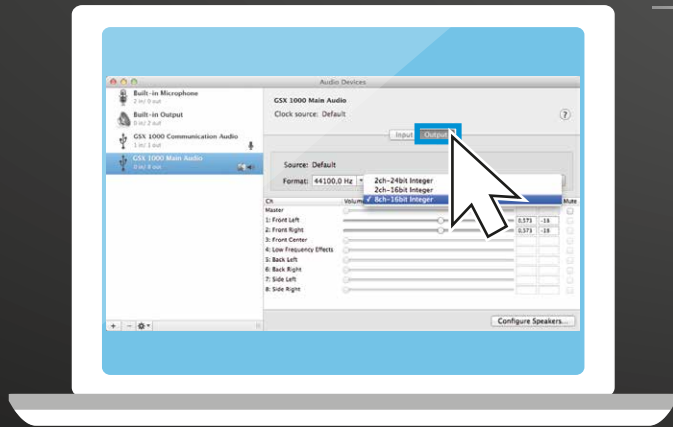
7. Select "GSX... Communication Audio" and close the settings.



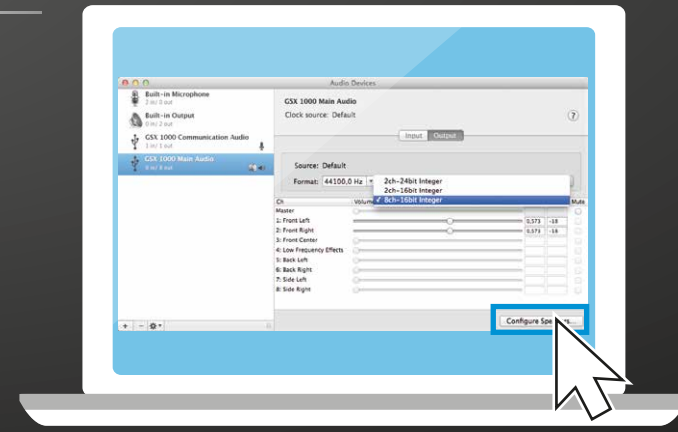
8. Enter "audio" in the "Finder" and select "Audio MIDI Setup" application.

Changing the sound settings on a Mac | Audioeinstellungen am Mac anpassen | Réglage des paramètres audio du Mac | Adattamento delle impostazioni audio sul Mac | Ajustar los ajustes de audio en Mac | Ajustar as definições de áudio num Mac | Audio-instellingen op de Mac aanpassen | Προσαρμογή των ρυθμίσεων ήχου σε Mac | Tilpasning af audioindstillinger på en mac | Justera ljudinställningarna på Mac-dator | Säädä Mac-tietokoneen audioasetukset | Dostosowywanie ustawień audio na komputerze Mac | Адаптація настроек звука на Mac | 调整Mac的音频设置 | 調整 Mac 的音訊設定 | Mac'te ses ayarlarının uyarlanması | オーディオ設定のMacでの変更 | Menyesuaikan pengaturan audio pada Mac | Mac에서 오디오-설정 조정

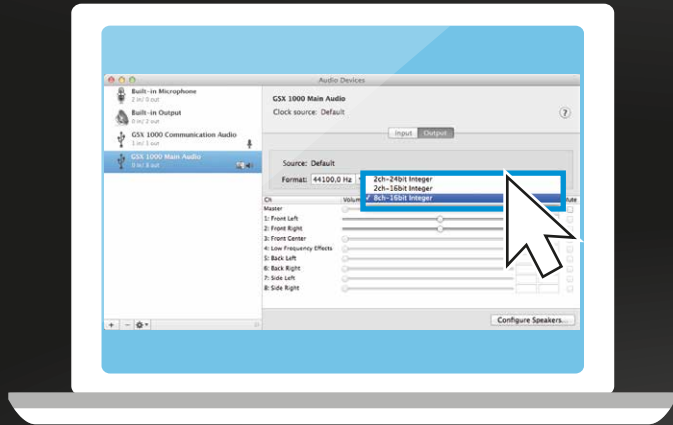
## Change audio settings: Mac



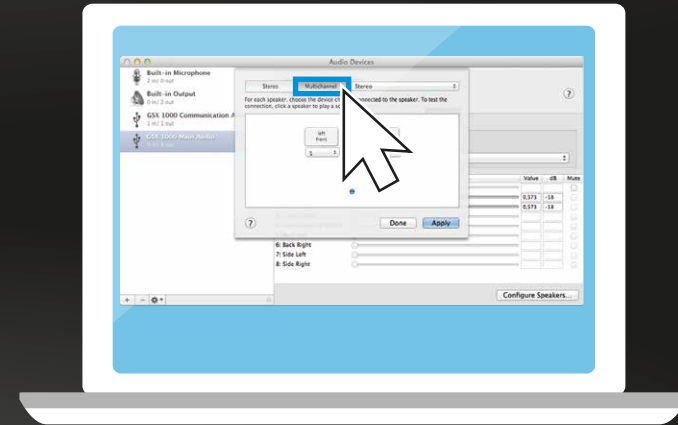
9. Select tab "Output".



11. Click "Configure speakers".



10. Select "8ch-16bit Integer" from the drop down menu.

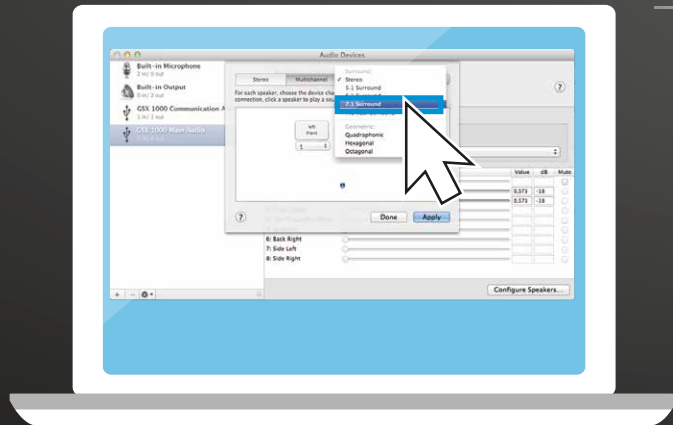


12. Select tab "Multichannel".

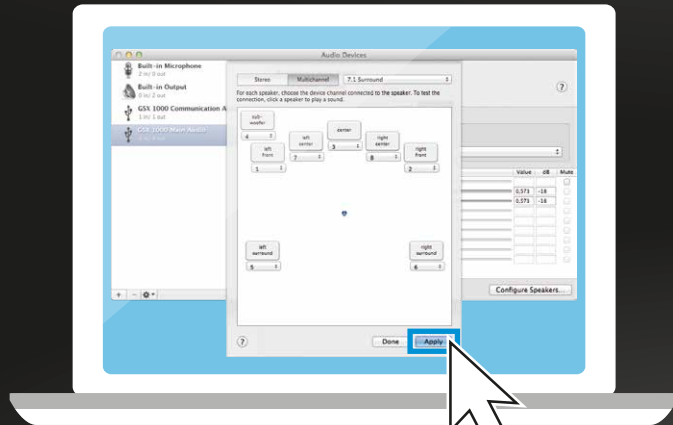
Changing the sound settings on a Mac | Audioeinstellungen am Mac anpassen | Réglage des paramètres audio du Mac | Adattamento delle impostazioni audio sul Mac | Ajustar los ajustes de audio en Mac | Ajustar as definições de áudio num Mac | Audio-instellingen op de Mac aanpassen | Προσαρμογή των ρυθμίσεων ήχου σε Mac | Tilpasning af audioindstillinger på en mac | Justera ljudinställningarna på Mac-dator | Säädä Mac-tietokoneen audioasetukset | Dostosowywanie ustawień audio na komputerze Mac | Адаптація настроек звука на Mac | 調整Macの音频设置 | 調整 Mac 的音訊設定 | Mac'te ses ayarlarının uyarlanması | オーディオ設定のMacでの変更 | Menyesuaikan pengaturan audio pada Mac | Mac에서 오디오-설정 조정

# 4 Installing the product

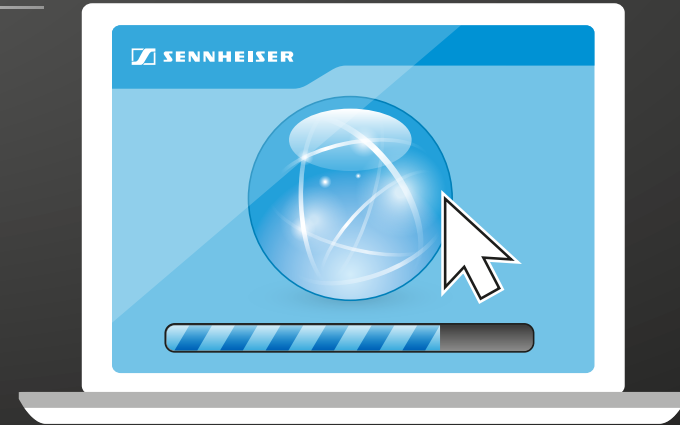
## Change audio settings: Mac



13. Select "7.1 Surround" from the drop down menu.



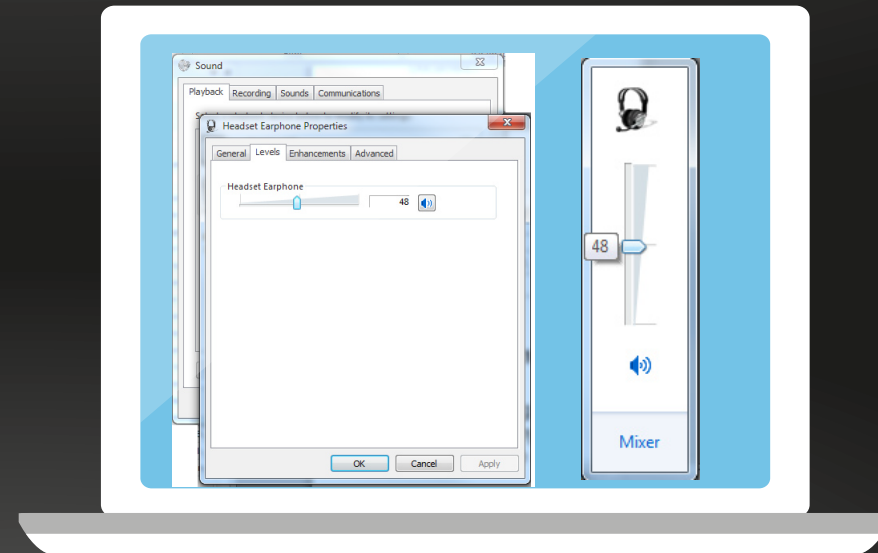
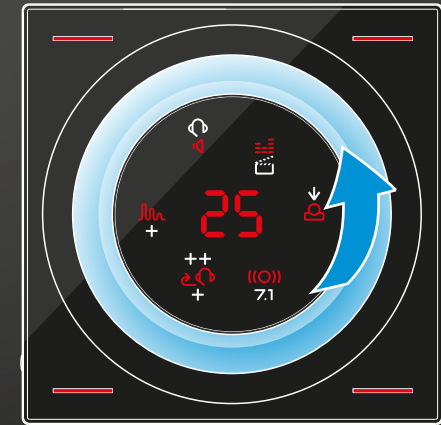
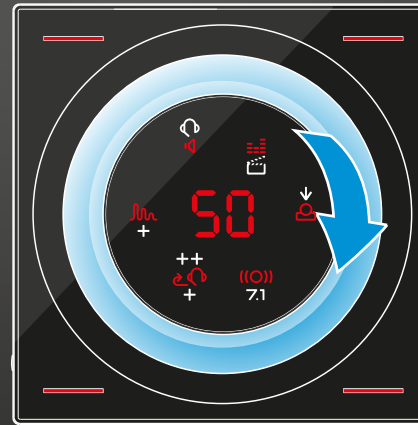
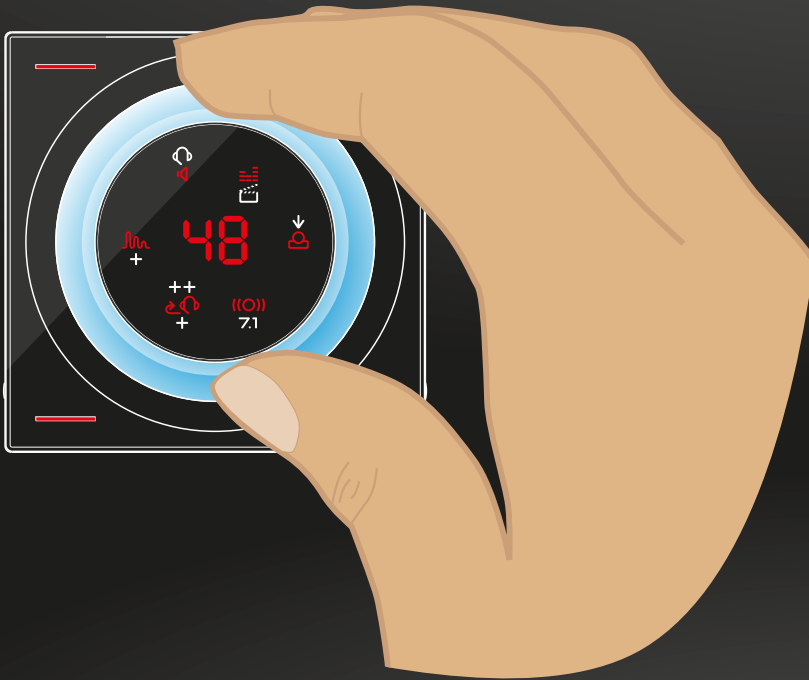
14. Click "Apply" to close the window.



For specific information and Firmware update please visit [www.sennheiser.com/gaming-downloads](http://www.sennheiser.com/gaming-downloads)

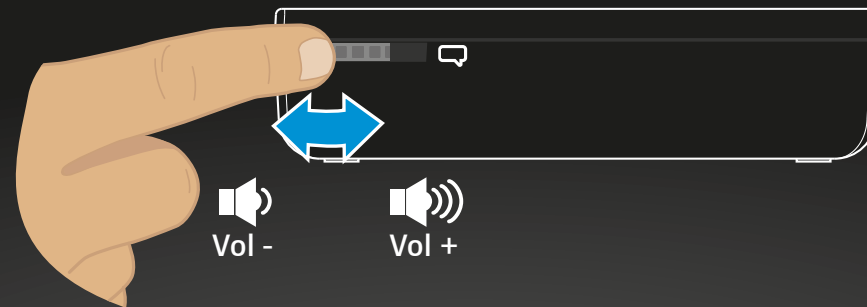
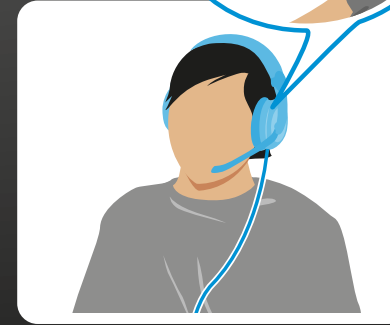
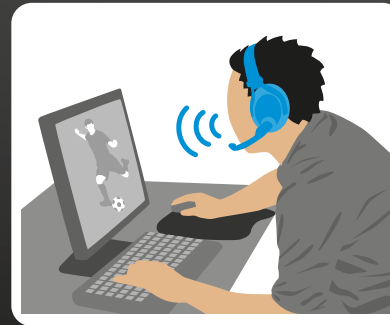


Changing the sound settings on a Mac | Audioeinstellungen am Mac anpassen | Réglage des paramètres audio du Mac | Adattamento delle impostazioni audio sul Mac | Ajustar los ajustes de audio en Mac | Ajustar as definições de áudio num Mac | Audio-instellingen op de Mac aanpassen | Προσαρμογή των ρυθμίσεων ήχου σε Mac | Tilpasning af audioindstillinger på en mac | Justera ljudinställningarna på Mac-dator | Säädä Mac-tietokoneen audioasetukset | Dostosowywanie ustawień audio na komputerze Mac | Адаптація настроек звука на Mac | 调整Mac的音频设置 | 調整 Mac 的音訊設定 | Mac'te ses ayarlarının uyarlanması | オーディオ設定のMacでの変更 | Menyesuaikan pengaturan audio pada Mac | Mac에서 오디오-설정 조정



Changing the volume via volume wheel or via your computer | Laustärke über „Volume wheel“ oder Computer einstellen | Réglage du volume via la commande du volume ou sur l'ordinateur | Impostazione del volume attraverso l'apposita manopola o il computer | Ajustar el volumen mediante "Volume wheel" u ordenador | Definir o volume através do botão regulador do volume ou do computador | Geluidssterkte via „Volume wheel“ of computer instellen | Ρύθμιση έντασης ήχου μέσω του τροχού έντασης ή του υπολογιστή | Indstilling af lydstyrken via „volume wheel“ eller computer | J ustera volymen via „Volume wheel“ eller via datorn | Säädä äänenvoimakkuus "volume wheel":n tai tietokoneen välityksellä | Regulacja głośności za pomocą pokrętki „Volume“ lub komputera | Регулировка громкости с помощью колесика или на компьютере | 通过“音量旋钮”或电脑设置音量 | 通过「音量旋钮」或电脑设定音量 | "Volume wheel" veya bilgisayar üzerinden ses seviyesinin ayarlanması | 「ボリューム・ホイール」またはPCでのボリュームの調節 | Mengatur volume melalui "tombol Volume" atau komputer | "Volume wheel(소리 조절기)" 또는 컴퓨터로 볼륨 설정

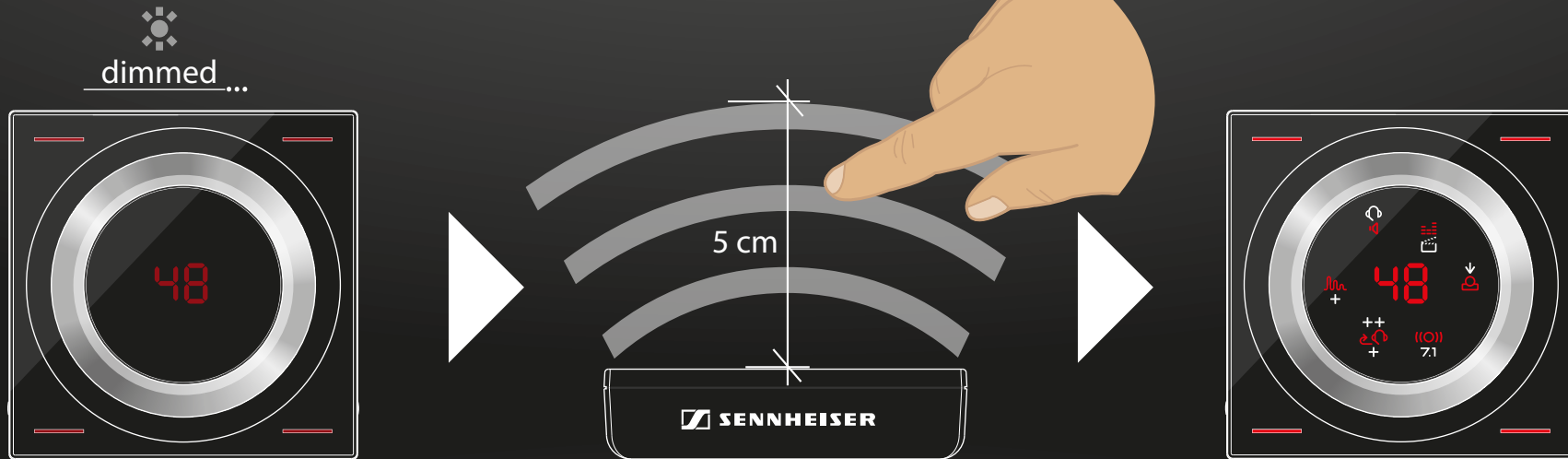
## Change the chat volume



Changing the chat volume | Chat-Lautstärke einstellen | Réglage du volume du chat |  
Impostazione del volume chat | Ajustar el volumen de chat | Definir o volume de chat |  
Chat-geluidssterkte instellen | Ρύθμιση έντασης ήχου συνομιλίας | Indstilling af chat-lydstyrken |  
Justera volymen på chatten | Säädä chat-äänenvoimakkuus | Regulacja głośności czatu |  
Регулировка громкости уведомлений из чата | 设置聊天音量 | 設定聊天音量 | Chat (Sohbet) ses seviyesinin ayarlanması |  
チャットのボリューム調節 | Mengatur volume chat | 채팅-볼륨 설정

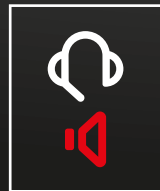
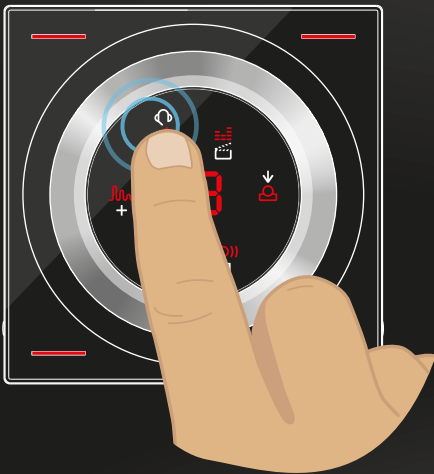
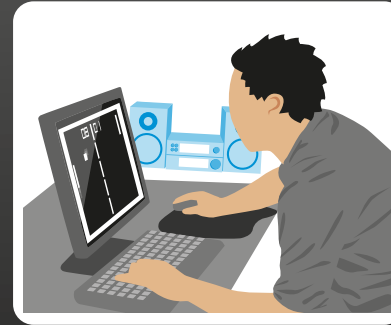


come close to activate the screen



Activating the screen | Anzeige aktivieren | Activation de l'affichage |  
Attivazione della visualizzazione | Activar la pantalla | Ativar o ecrã |  
Weergave activeren | Ενεργοποίηση της οθόνης | Aktivering af visningen |  
Aktivera displayen | Aktivoi näyttö | Aktywacja ekranu |  
Активация экрана | 激活显示屏 | 啟動顯示幕 | Göstergenin etkinleştirilmesi |  
表示の有効化 | Mengaktifkan indikator | 표시 활성화

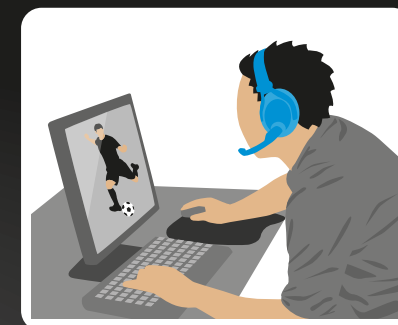
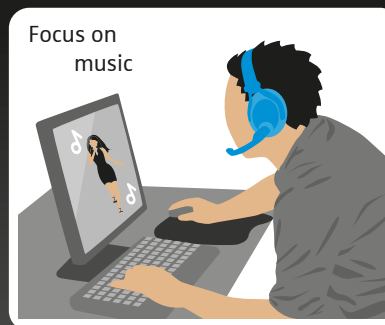
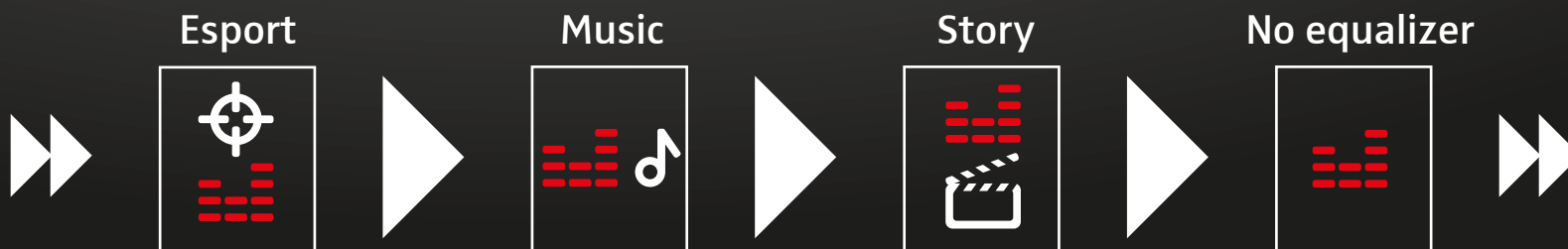
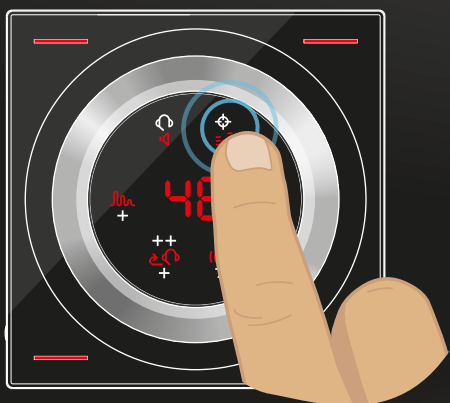
touch the loudspeaker icon



only equalizer settings available

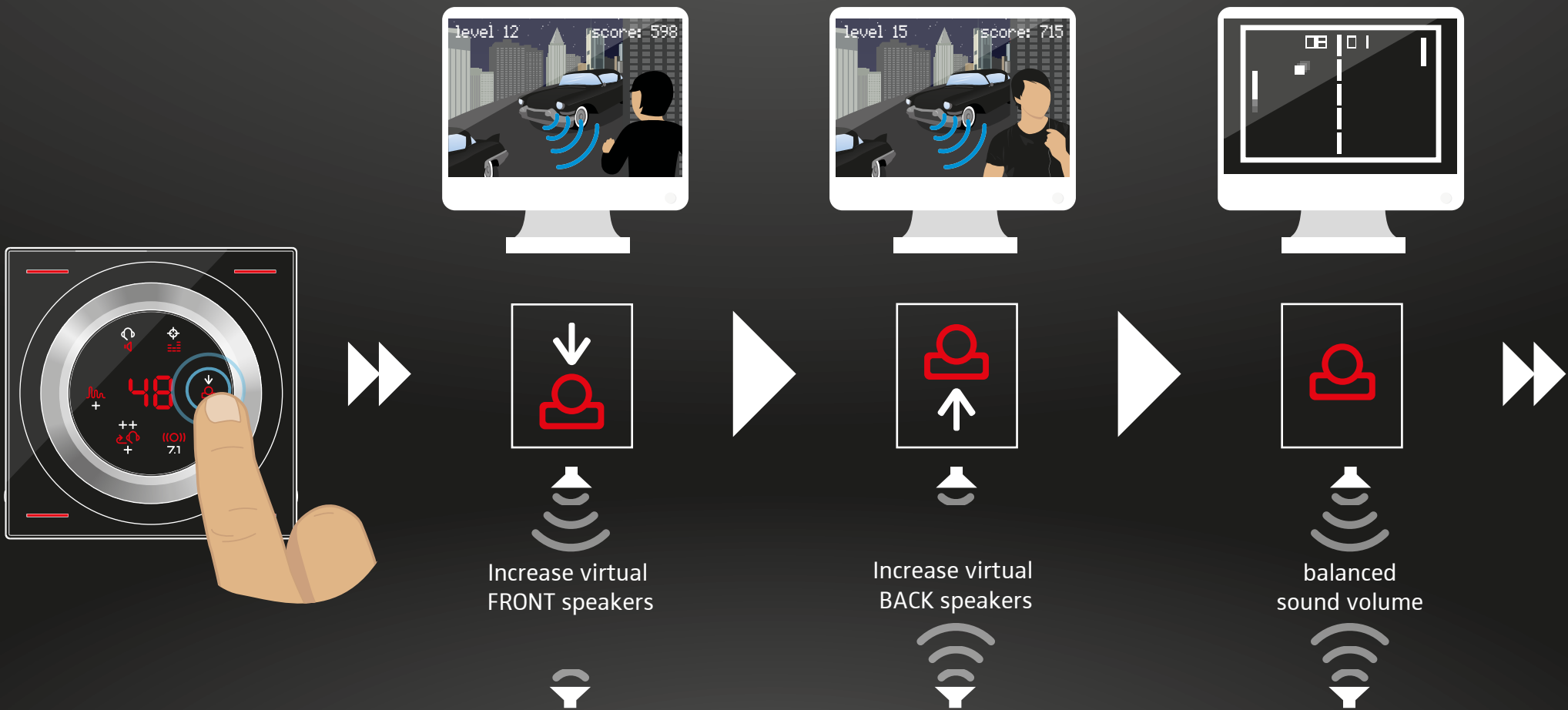
Switching between headset & speakers | Zwischen Headset und Lautsprechern umschalten | Commutation entre le casque micro et les haut-parleurs  
Commutazione tra headset e altoparlanti | Conmutar entre el headset y los altavoces | Comutar entre os microauscultadores e as colunas |  
Tussen headset en luidsprekers omschakelen | Εναλλαγή μεταξύ σετ κεφαλής και ηχείων | Omstilling mellem headset og højttalere |  
Växla mellan headsetet och högtalare | Vaihda kytkentä kuulokemikrofonin ja kaiuttimien välillä | Przełączanie między zestawem słuchaw-  
kowym i głośnikami | Переключение между гарнитурой и динамиками | 在耳机与扬声器之间切换 | 在頭戴式耳機和揚聲器之間進行切換 | Kulaklık  
ve hoparlörler arasında geçiş yapma | ヘッドセットとスピーカーの切り替え | Beralih antara headset dan loudspeaker | 헤드셋 및 스피커 전환

touch the equalizer icon



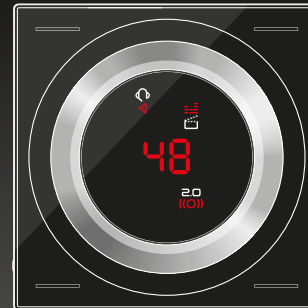
Choosing equalizer settings | Equalizer-Einstellungen wählen | Sélection des paramètres de l'égaliseur |  
 Selezione delle impostazioni dell'equalizzatore | Seleccionar los ajustes del equalizador | Selecionar as definições do equalizador |  
 Equalizer-instellingen selecteren | Επιλογή ρυθμίσεων του ισοσταθμιστή | Valg af equalizer-indstillinger |  
 Välj equalizerinställningar | Valitse Equalizer-asetukset | Wybór ustawień equalizera |  
 Выбор настроек эквалайзера | 选择均衡器设置 | 選擇均衡器設定 | Ekolayzer ayarlarının seçilmesi |  
 イコライザー設定の選択 | Memilih pengaturan equalizer | 이퀄라이저-설정 선택

touch the sound focus icon



Changing amplification focus to front or rear | virtuelle Verstärkung vorn oder hinten einstellen | Réglage de l'amplification virtuelle avant et arrière  
 Impostazione dell'amplificazione virtuale davanti o dietro | Ajustar la ganancia virtual delantera o posterior | Definir a amplificação virtual à frente ou atrás | virtuelle versterking voor of achter instellen | ρύθμιση εικονικής ενίσχυσης εμπρός ή πίσω | Indstilling af virtuel forstærkning forfra eller bagfra | Justera virtuell förstärkning fram och bak | Säädä virtuaalinen voimakkuus edestä tai takaa | Regulacja wzmacnienia wirtualnego z przodu lub z tyłu | Настройка виртуального усиления спереди или сзади | 设置前方或后方虚拟增益 | 設定前方或後方的虛擬增益 | Ön veya arka sanal amplifikasyonun ayarlanması | 前後の仮想ボリュームの設定 | Mengatur amplifier virtual depan atau belakang | 전방 및 후방 가상 증폭 설정

touch the audio icon



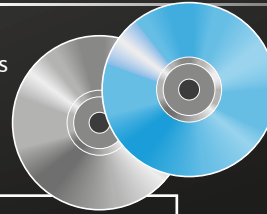
For movies and games supporting 7.1 and 5.1 surround sound.



**CAUTION!**  
Hearing damage due to high volumes!  
This mode provides a higher volume level.  
Reduce the volume level via the product or  
via your computer to avoid hearing damage.



24 Bit/96 kHz audio:  
HD will be activated if 24 bit is  
set ON in Windows. Not all  
settings are available.



Choosing stereo or 7.1 virtual surround sound | Stereo oder 7.1 virtuellen Raumklang wählen | Sélection du relief acoustique stéréo ou 7.1 | Selezione di stereo o di suono stereofonico virtuale 7.1 | Seleccionar estéreo o sonido envolvente virtual 7.1 | Seleccionar o som surround estéreo ou surround virtual 7.1 | Stereo of 7.1 virtueel ruimtelijk geluid selecteren | Επιλογή ήχου stereo ή ήχου virtual surround 7.1 | Valg af stereo eller 7.1 virtuel rumklang | Välj stereo eller 7.1 virtuell rumsligt ljud | Valitse stereo tai 7.1 virtuaalinen tilaääni | Wybór stereo lub wirtualnego dźwięku przestrzennego 7.1 | Выбор стерео или виртуального объемного звучания 7.1 | 选择立体声或7.1虚拟立体声 選擇立體聲或7.1 虛擬立體聲 | Stereo veya 7.1 sanal çevresel sesin seçilmesi | ステレオまたは7.1 仮想立体音響の選択 | Memilih stereo atau suara surround virtual 7.1 | 스테레오 또는 7.1 가상 입체 음향 선택

touch the headset icon



no sidetone



+ for low sidetone

Recommended for open back headsets and some on-ear headsets.

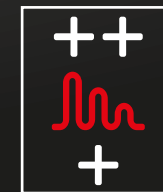
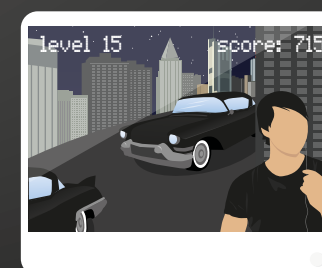
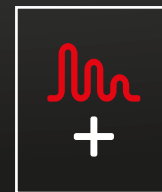
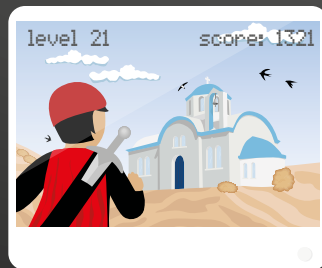


++ for high sidetone

Recommended for closed back around-ear or in-ear headsets.

Adjusting the sidetone | Mithörton anpassen | Réglage du son d'écoute |  
Adattamento dell'audio di ascolto | Ajustar el sidetone | Ajustar o tom lateral |  
Meelustergeluid aanpassen | Ρύθμιση πλευρικού τόνου | Tilpasning af medhørstønen |  
Justera ljudet för medlyssning | Säädä sivuääni | Regulacja funkcji podłuchu |  
Изменение громкости посторонних звуков | 調整側音 | 調整側音 | Birlikte dinleme sesinin uyarlanması |  
側音の調節 | Menyesuaikan nada samping | 촉음 조정

touch the environment icon



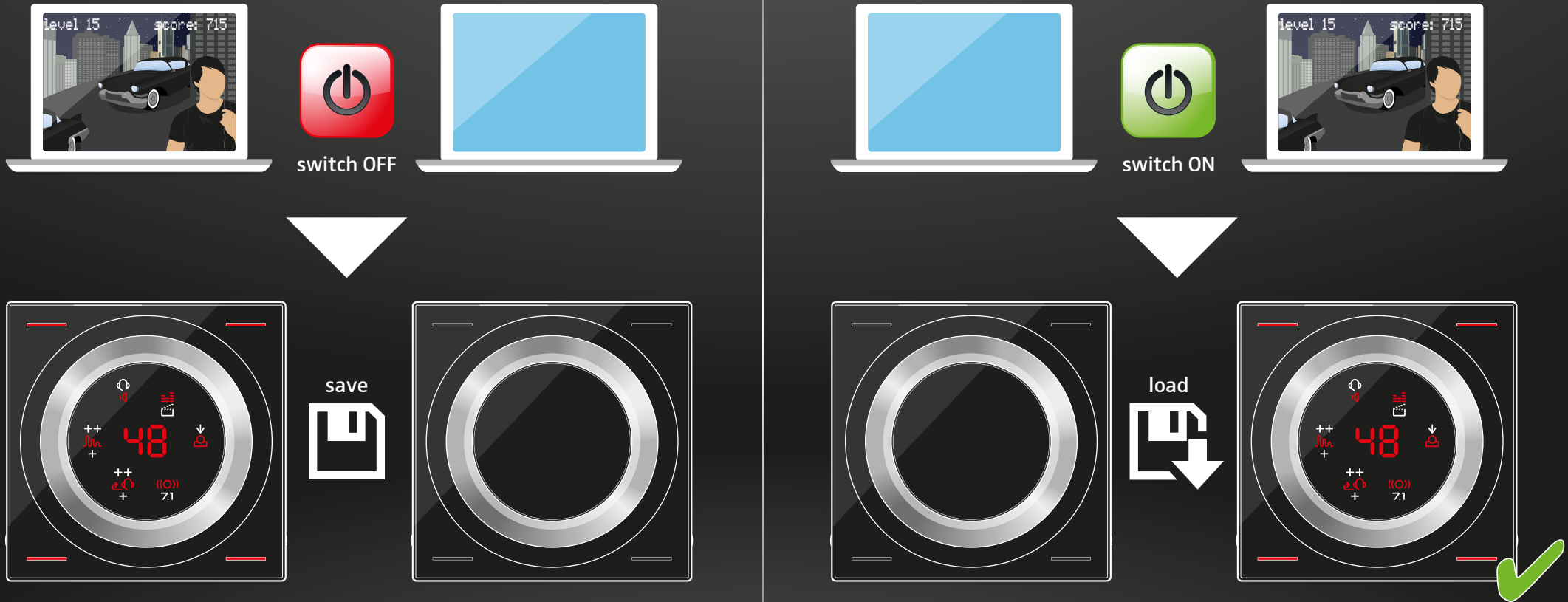
**environment**  
**for super accurate sound**  
 Recommended for highest accuracy in sound reproduction.

**environment**  
**+ for confined space**  
 Recommended for semi open world games.

**environment**  
**++ for open world**  
 Recommended for open world games.

Changing reverb (environments) | Halleffekt (Umgebung) anpassen | Réglage de l'effet hall (ambiance) | Adattamento effetto Hall (ambiente) | Ajustar el efecto Hall (entorno) | Ajustar o efeito de reverberação (ambiente) | Haleffect (omgeving) aanpassen | Ρύθμιση εφέ αντήχησης (περιβάλλον) | Tilpasning af Hall-effekten (omgivelser) | Justera ekoeffekten (omgivning) | Säädä kaiku (ympäristö) | Dostosowywanie pogłosu (otoczenie) | Изменение пространственного эффекта (среды) | 调整混响 (环境) | 調整霍爾效應 (環境) | Hall etkisinin (çevre) uyarlanması | エコ効果 (周辺) の変更 | Menyesuaikan efek echo (lingkungan) | 홀 효과(주변) 조정

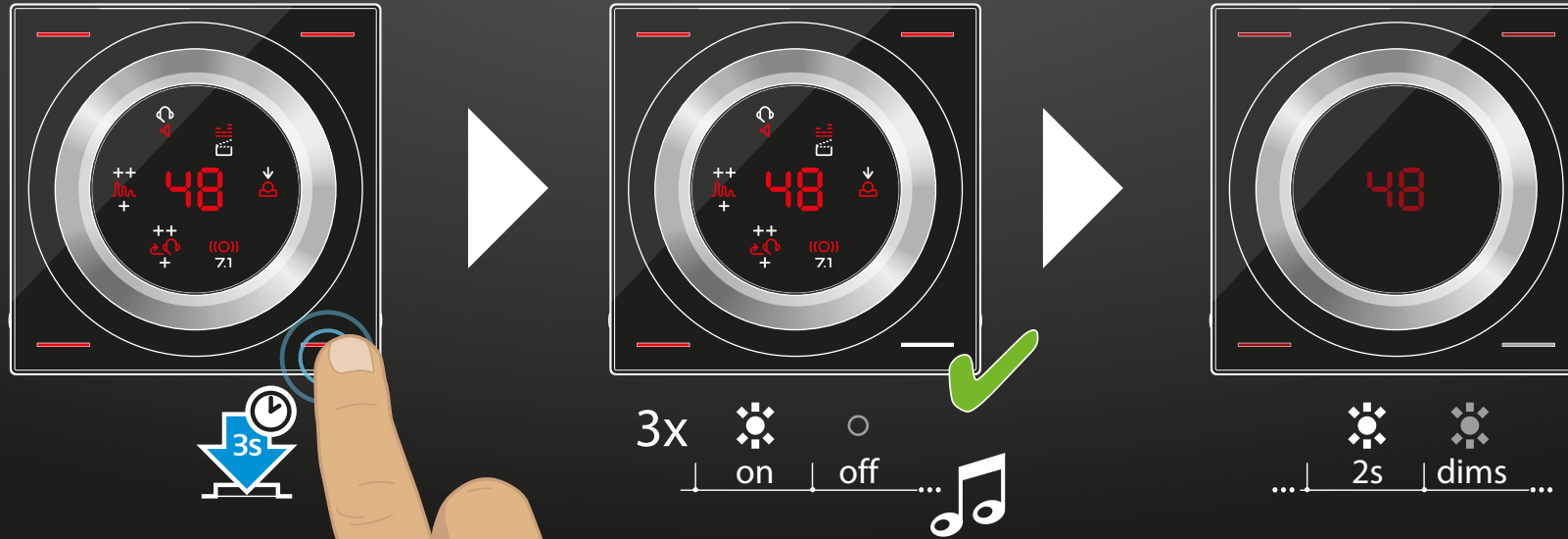
computer OFF & ON: saves & loads latest settings



Latest settings are stored automatically | Aktuelle Einstellungen werden automatisch gespeichert | Les paramètres actuels sont sauvegardés automatiquement | Le impostazioni attuali vengono memorizzate in automatico | Los ajustes actuales se guardan automáticamente | As definições atuais são automaticamente memorizadas | Actuele instellingen worden automatisch opgeslagen | Οι πιο πρόσφατες αλλαγές αποθηκεύονται αυτόματα | Automatisk lagring af aktuelle indstillinger | Aktuella inställningar sparas automatiskt | Νυκτισετ асетуксет таллентуват аутоматтисесті | Aktualne ustawienia są automatycznie zapamiętywane | Автоматическое сохранение текущих настроек | 当前设置将会自动保存 | 目前設定將會自動儲存 | Güncel ayarlar otomatik olarak kaydedilir | 現在の設定は自動的に保存されます。 | Pengaturan aktual akan disimpan secara otomatis | 현재 설정이 자동으로 저장됩니다.



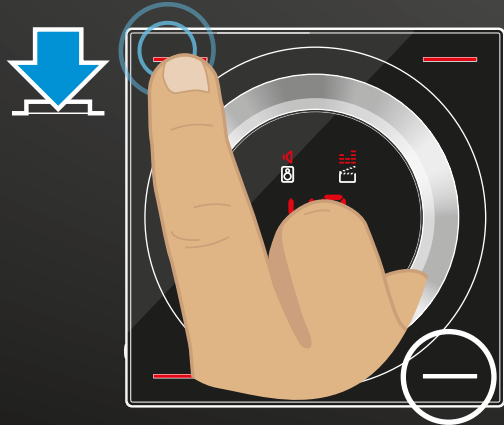
touch & hold one button to save the settings as preset



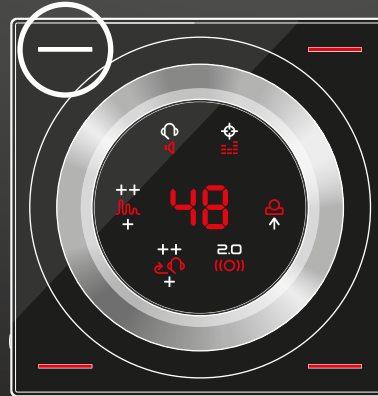
Saving settings as a preset: up to 4 - one in each corner | Einstellungen als Vorgabe speichern: bis zu 4 - eine in jeder Ecke | Sauvegarde des paramètres consignés : jusqu'à 4 - un dans chaque angle | Memorizzazione delle impostazioni come predefinite: fino a 4 - una in ogni angolo | Guardar los ajustes como predefinidos: hasta 4 - uno en cada esquina | Guardar definições como predefinição: até 4 - uma em cada canto | Instellingen als vastgelegde waarde opslaan: max. 4 - één in elke hoek | Αποθήκευση ρυθμίσεων ως προεπιλογή: μέχρι 4 - μία σε κάθε γωνία | Lagring af indstillinger som forlæg: op til 4 - en i hvert hjørne | Spara inställningar som förval: upp till 4 - en i varje hörn | Tallenna asetukset oletukseksi: enintään neljään - yksi jokaisessa nurkassa | Zapisz ustawień jako wartość zadana: maks. 4 - dla każdego rogu | Сохранение настроек для последующего использования: до 4 — одна в каждом углу | 将设置保存为预设: 最多为4个 - 每个角1个 | 將設定儲存為規定參數: 最多為4個 - 每個角一個 | Ayarların varsayılan olarak kaydedilmesi: en fazla 4 - her köşede bir adet | 設定をデフォルトとして保存: 4件まで、各コーナーで1件ずつ | Menyimpan pengaturan sebagai default: hingga 4 - satu di setiap sudut | 설정을 표준으로 저장: 각 코너에 하나씩 최대 4개

# 6 Saving & loading settings

touch one button to load the preset



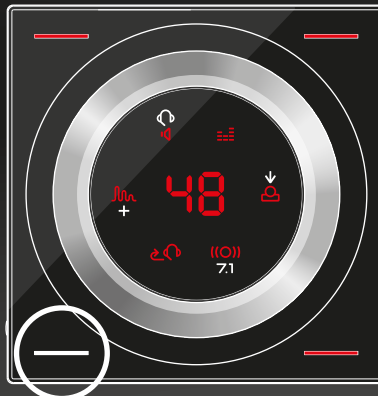
example: preset 4



example: preset 1

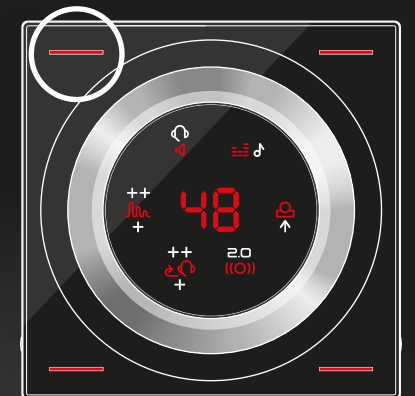
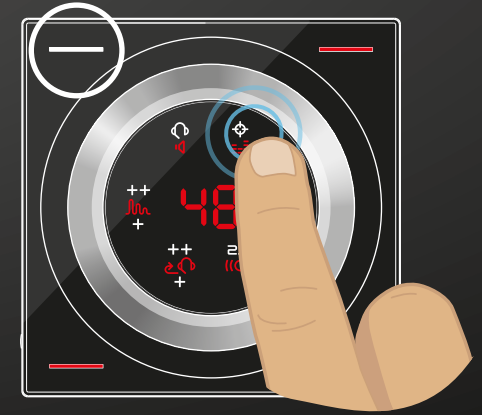


example: preset 2



example: preset 3

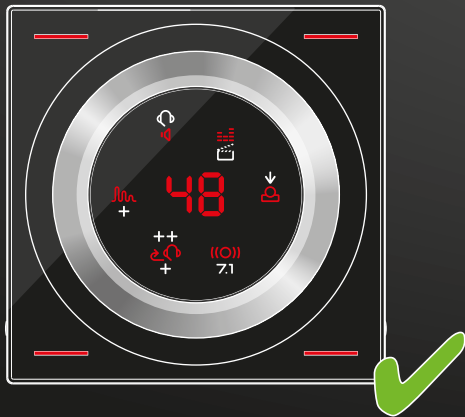
change settings: all presets red



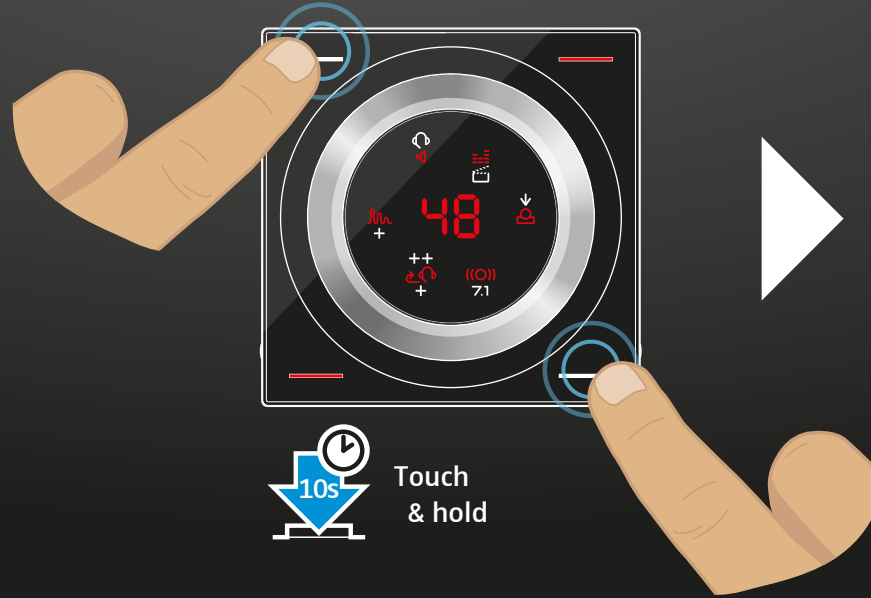
Loading one of your 4 presets | Eine Deiner 4 Voreinstellungen (preset) laden | Chargement d'une de tes 4 présélections (preset) | Caricamento di una delle 4 preimpostazioni personali (preset) | Cargar uno de los 4 preajustes (preset) | Carregar uma das tuas 4 predefinições | Eén van je 4 vooraf ingestelde instellingen (preset) laden | Φόρτωση μίας εκ των 4 προεπιλεγμένων ρυθμίσεων (preset) | Indlæsning af en af dine 4 forindstillinger (preset) | Hämta en av dina 4 förvalda (preset) inställningar | Lataa yksi neljästä esiasetuksestasi (preset) | Ładowanie jednego z 4 ustawień wstępnych (preset) | Загрузка одной из 4 предварительных настроек (пресетов) | 加载4个预设中的1个 | 載入 4 個預設的其中一個 | 4 ön ayarından (preset) birini yükleme | 保存した 4 つの設定 (プリセット) のうちの 1 つを読み込む | Memuat 4 preset Anda | 4개 사전 설정(프리셋) 중 1개 불러오기

touch & hold preset buttons to activate/deactivate Tournament Mode\*

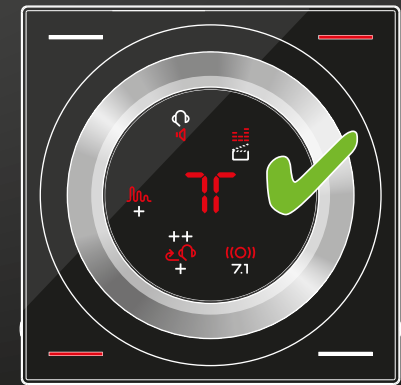
\*Upgrade Firmware – if required.



Change settings



Touch & hold



Settings LOCKED



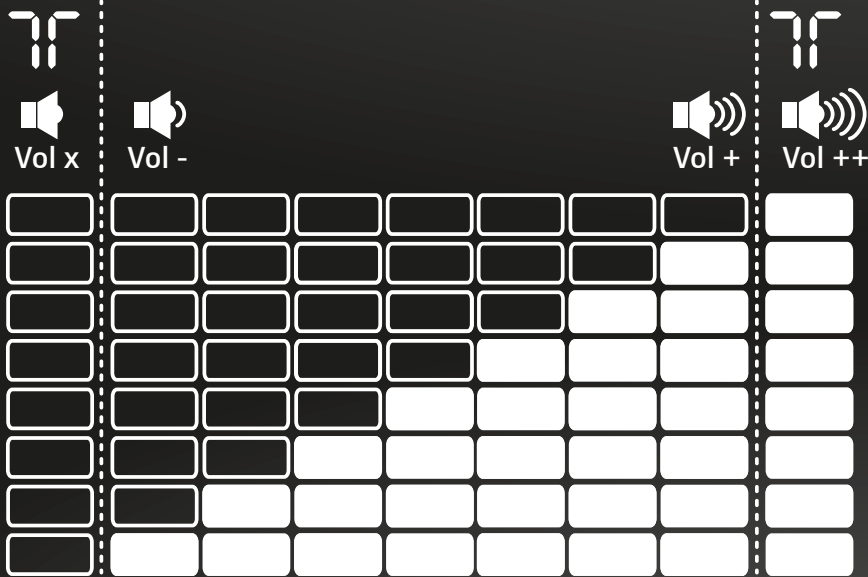
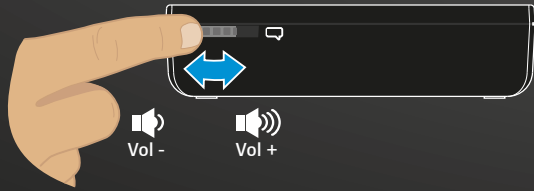
# Tournament Mode

Activating/deactivating Tournament Mode | Turnier-Modus aktivieren/deaktivieren | Activation/Désactivation du mode tournois | Attivazione/disattivazione della modalità Torneo | Activar/desactivar modo torneo | Ativar/desativar o Modo de Torneo | De toernooimodus in-/uitschakelen | Ενεργοποίηση/απενεργοποίηση της λειτουργίας Τουρνουά | Aktivering/deaktivering af turneringsmodus | Aktivera/avaktivera turneringsläget | Turnaustilan ottaminen käyttöön / poistaminen käytöstä | Aktywacja/Dezaktywacja trybu turniejowego | Включение/выключение режима турнира | 开启/关闭巡回赛模式 | 啟用/停用競賽模式 | Turnuva Modunu etkinleştirme/devre dışı bırakma | トーナメントモードの有効化/無効化 | Mengaktifkan/menonaktifkan Mode Turnamen | 토너먼트 모드 활성화/비활성화

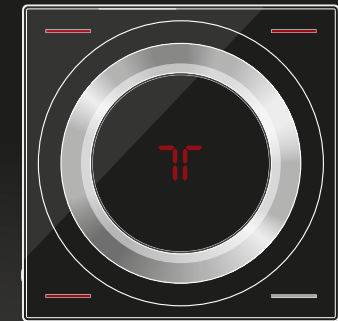
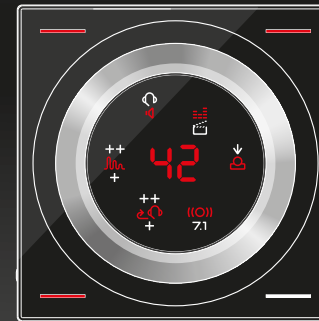
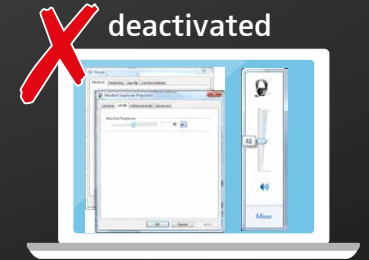
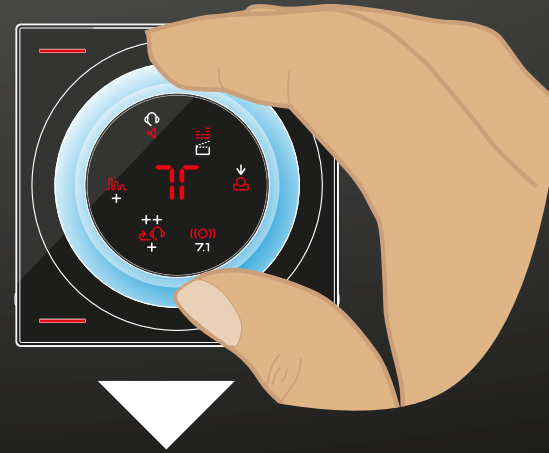


## Tournament Mode features

Changing the incoming chat volume

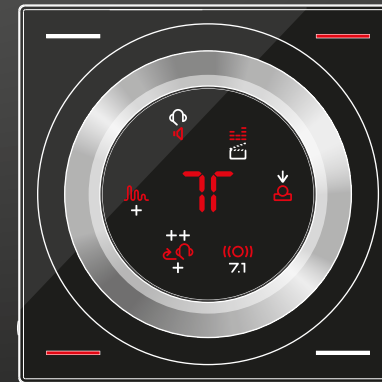


Changing the volume via volume wheel

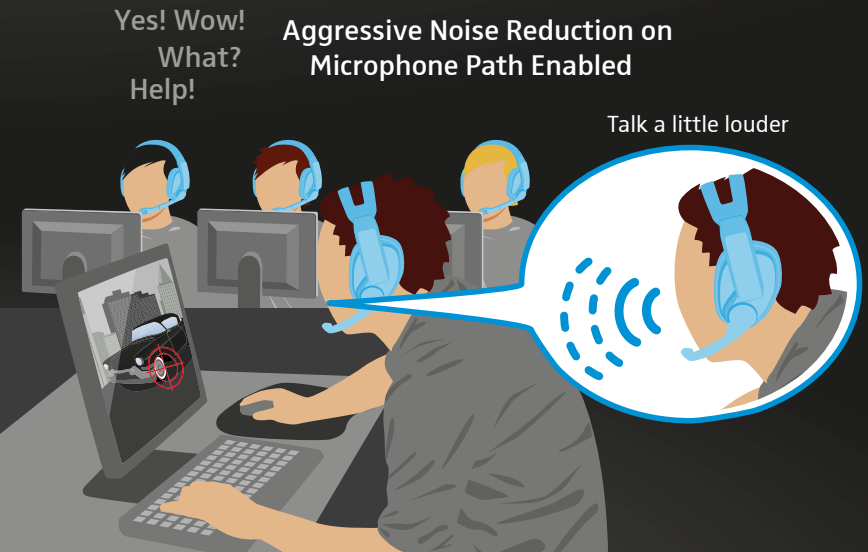


Specific features in Tournament Mode | Besonderheiten im Turnier-Modus | Caractéristiques spécifiques en mode tournois | Funzionalità specifiche della modalità Torneo | Características específicas del modo torneo | Funcionalidades específicas no Modo de Torneo | Specifieke mogelijkheden in de toernooimodus | Ειδικές λειτουργίες στη λειτουργία Τουρνουά | Specifikke funktioner i turneringsmodus | Specifika egenskaper i turneringsläge | Turnaustilassa käytettävissä olevia erityistoimintoja | Funkcje specjalne w trybie turniejowym | Особые функции в режиме турнира | 巡回赛模式中的特有功能 | 競賽模式的特定功能 | Turnuva Modundaki özel özellikler | トーナメントモードごとの機能 | Fitur spesifik dalam Mode Turnamen | 토너먼트 모드의 특별 기능

Tournament Mode features

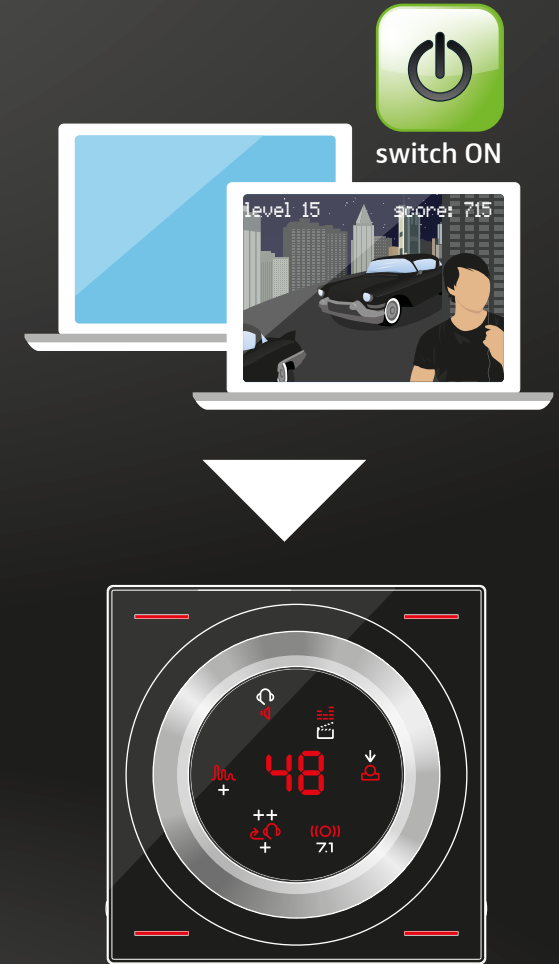
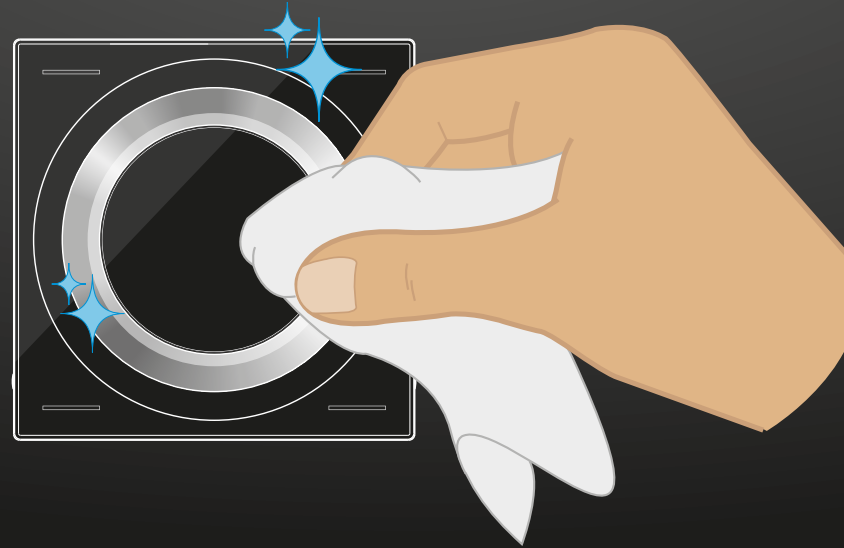
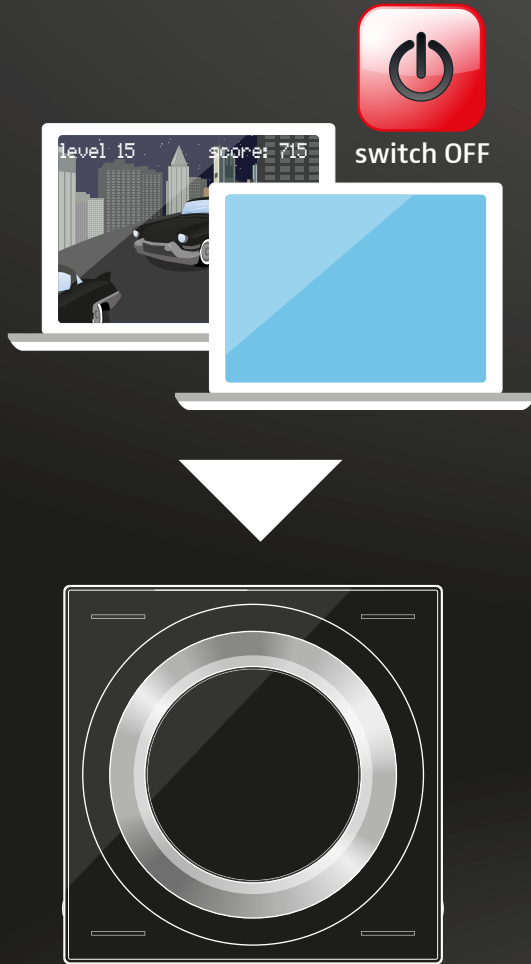


Yes! Wow!  
What?  
Help!



Specific features in Tournament Mode | Besonderheiten im Turnier-Modus | Caractéristiques spécifiques en mode tournois | Funzionalità specifiche della modalità Torneo | Características específicas del modo torneo | Funcionalidades específicas no Modo de Torneo | Specifieke mogelijkheden in de toernooimodus | Ειδικές λειτουργίες στη λειτουργία Τουρνουά | Specifikke funktioner i turneringsmodus | Specifika egenskaper i turneringsläge | Turnaustilassa käytettävissä olevia erityistoimintoja | Funkcje specjalne w trybie turniejowym | Особые функции в режиме турнира | 巡回赛模式中的特有功能 | 競賽模式的特定功能 | Turnuva Modundaki özel özellikler | トーナメントモードごとの機能 | Fitur spesifik dalam Mode Turnamen | 토너먼트 모드의 특별 기능

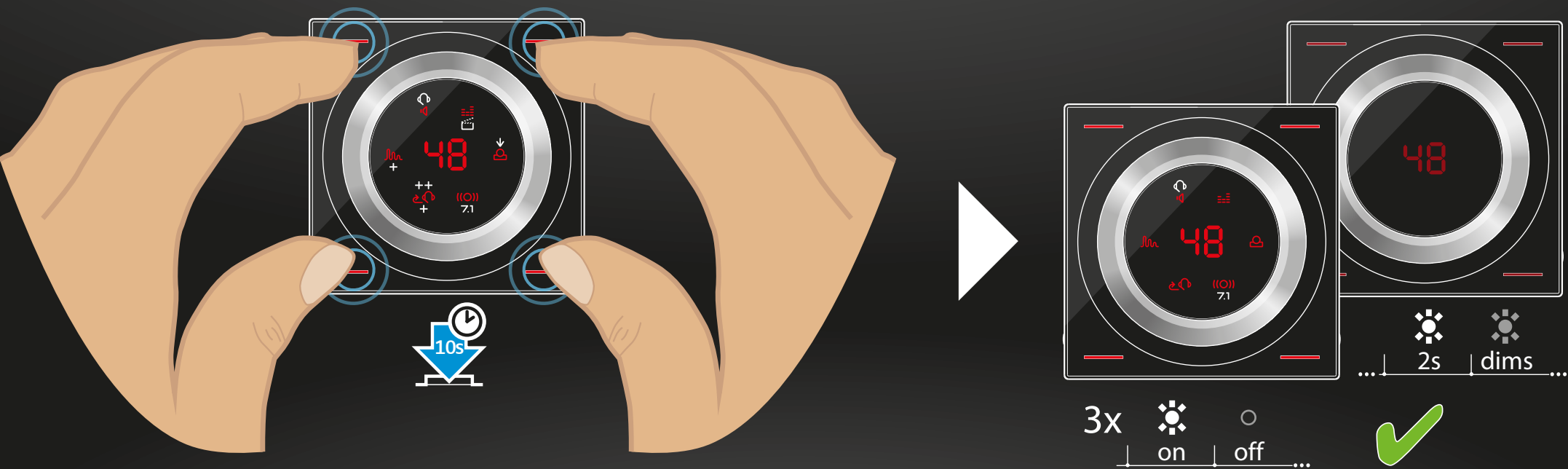
Clean the product with a soft & dry cloth



Cleaning the product | Produkt reinigen | Nettoyage de l'appareil |  
Pulizia del prodotto | Limpiar el producto | Limpar o produto |  
Product reinigen | Καθαρισμός προϊόντος | Rengöring af produktet |  
Rengör produkten | Puhdistusta tuote | Czyszczenie produktu |  
Очистка изделия | 清洁产品 | 清潔產品 | Ürünün temizlenmesi |  
製品のお手入れ | Membersihkan produk | 제품 청소



touch all preset buttons to restore factory settings



Restoring factory settings | Auf Werkseinstellungen zurücksetzen | Réinitialisation des paramètres d'usine |  
Ripristino delle impostazioni di fabbrica | Restablecer los ajustes de fábrica | Repor as definições de fábrica |  
Resetten op fabrieksinstellingen | Επαναφορά εργοστασιακών ρυθμίσεων | Tilbagestilling til fabriksindstillinger |  
Återställ till fabriksinställningarna | Palauta tehdasasetukset | Przywrócenie ustawień domyślnych |  
Сброс на заводские настройки | 恢复出厂设置 | 恢復出廠預設值 | Varsayılan fabrika ayarlarının geri yüklenmesi |  
工場出荷時の初期設定にリセットする | Mengatur ulang pengaturan default pabrik | 공장 설정값으로 리셋하기

Please visit our website for  
further information & tutorials:



[www.sennheiser.com/gaming/GSX1000](http://www.sennheiser.com/gaming/GSX1000)

Please contact our  
product service support:



[www.sennheiser.com/service-support](http://www.sennheiser.com/service-support)



**Sennheiser Communications A/S**

Industriparken 27, DK-2750, Denmark  
[www.sennheiser.com](http://www.sennheiser.com)

Publ. 10/17, A03

 **SENNHEISER**