



Philips ThermoProtect
Hairdryer

ThermoProtect
2100W



HP8204/10



Powerful drying and protected hair

Protect your hair while enjoying fast drying results. Choose from multiple speed and temperature settings to get the blow dry you want or select ThermoProtect for fast drying at a constant caring temperature.

Beautifully styled hair

- DC Motor and 2100W of powerful airflow
- Six flexible speed and temperature settings for full control
- Ultra narrow concentrator for perfect brushing
- Cool Shot sets your style

Less hair damage

- ThermoProtect, protects your hair against overheating

Easy to use

- 1.8m power cord
- Easy storage hook for convenient storage

PHILIPS

Highlights

ThermoProtect anti overheating



The ThermoProtect temperature setting provides the optimal drying temperature and gives additional protection from overheating the hair. With the same powerful airflow, you will get the best results in a caring way.

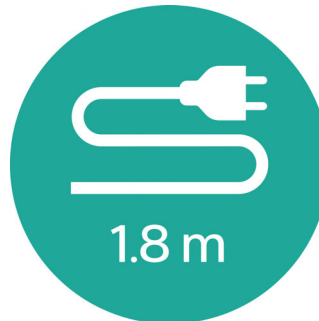
Accurate control



The speed and heat required can be easily adjusted to create the perfect style. Six different settings ensure full control for precise and tailored styling.

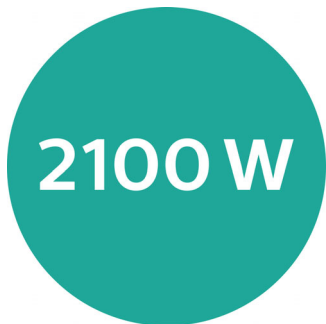
intense burst of cold air. It is used after styling to finish and set the style.

1.8m cord



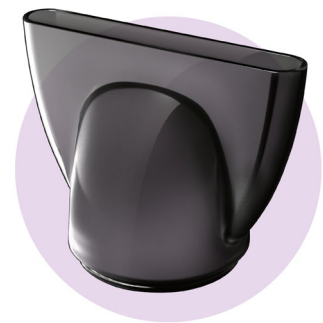
Convenient to use thanks to the 1.8m power cord length.

Powerful



This Philips Thermoprotect hairdryer creates 2100W for a fast airflow. The resulting combination of power and speed makes drying and styling your hair quicker and easier.

11mm ultra narrow concentrator



Perfect styling results and a shiny, polished look with a ultra narrow concentrator for precise styling.

Easy storage hook



A rubberized hook can be found on the base of the handle. Use to store easily at home or if staying at a hotel.

Cool Shot



A must-have professional function for hair stylers. The Cool Shot button provides an

Specifications

Features

- Ceramic coating: No
- Cool shot
- Diffuser: No
- Dual voltage: No
- Foldable handle: No
- Hanging loop
- Ion conditioning: No
- Nozzle / Concentrator
- Number of attachments: 1
- Travel Pouch included: No

Service

- 2-year guarantee

Technical specifications

- Color/finishing: Matt Black
- Cord length: 1.8 m
- Frequency: 50-60 Hz
- Motor: DC Motor
- Power: 2100 W
- Voltage: 220-240 V
- Wattage: 2100 W



Issue date 2015-06-29

Version: 2.4.1

© 2015 Koninklijke Philips N.V.
All Rights reserved.

Specifications are subject to change without notice.
Trademarks are the property of Koninklijke Philips N.V.
or their respective owners.

www.philips.com